

INSTRUCTIONS

1. Original and/or subsequent record used to evaluate the corner position.
2. Description of evidence found, note discrepancies in the record, state method of establishing lost or obliterated corners.
3. Description of monument and accessories set to perpetuate the corner position.
4. Sketch of corner, show all pertinent data which can best be shown in a sketch example, corner marking, topography ties, position of accessories, etc.
5. Certification must be signed and sealed by Land Surveyor registered in the State of Montana.
6. Fill in Cross Index & Section Diagram at bottom of sheet.

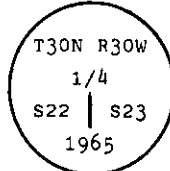
CERTIFIED CORNER RECORDATION

Corner 1/4 of Secs. 22 & 23 T. 30 N. R. 30 W. P.M.M. Lincoln County

- I. 1904, G.L.O. original record by G. W. Fessenden and R. Y. Lyman: Set a slate stone for the monument and marked two Bearing Trees.

1965 B.L.M. remonumentation record by D. G. Lindenberg: "The 1/4 sec. cor. of secs. 22 and 23, monumented with a slate stone, 14x7x6 ins., loosely set, marked 1/4 on the W side and witnessed by the original bearing trees. At the corner point

Set an iron post, 30 ins. long, 2 1/2 ins. diam., 26 ins. in the ground, with brass cap mkd.



from which

The original bearing trees:

A fir, 16 ins. diam., bears East, 59 lks. dist., with an overgrown blaze. (Record)

A larch, 9 ins. diam., bears S45 3/4 W, 60 lks. dist., with an overgrown blaze. (Record)

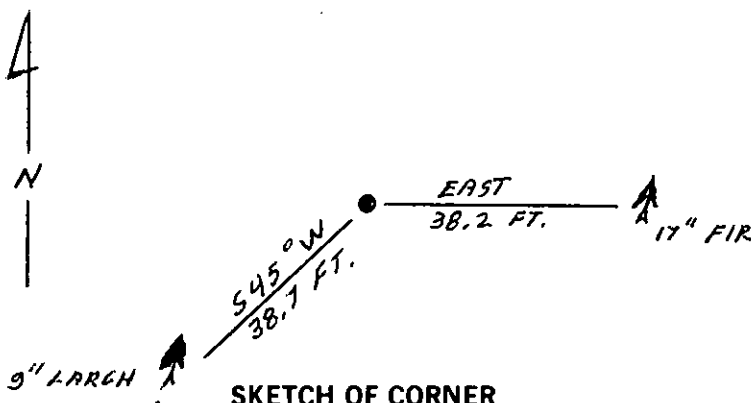
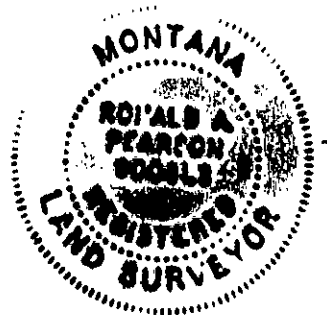
Bury the original stone alongside the iron post."

- II. Found a 2 1/2 ins. diam. iron pipe, 5 ins. out of ground with a 3 1/4 ins. diam. brass cap marked as shown above, from which

A douglas fir, 17 ins. diam., bears East, 38.2 ft. (57.9 lks.) dist., overgrown scribe blaze.

A larch, 9 ins. diam., bears S45 W, 38.7 ft. (58.6 lks.) dist., overgrown scribe blaze.

- III. Set a 6 ft. galvanized steel guard post with Land Survey Marker and Property Boundary decals, South, 3 ft. Painted red bands around the bearing trees and attached Bearing Tree and Land Survey Monument signs. Magnetic Declination: 21° 30' East



SKETCH OF CORNER

CERTIFICATION
Gary C. Crismon

I, _____
certify the information shown herein is true and correct.

Gary C. Crismon
Signature Ground Party Chief
Ronald A. Pearson

I, _____
certify that this Corner Record correctly represents work performed by me or under my direction in compliance with the "Corner Recordation Act" (70-22-101, et seq., M.C.A.)

Ronald A. Pearson
Signature of Surveyor & Seal

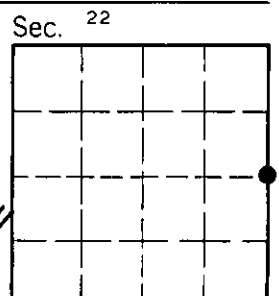
Date: 6/19/90 Reg. No. 9008LS
U.S. FOREST SERVICE

Employer: _____

Office of Clerk and Recorder, County of Lincoln. This "corner record" was filed for record on Aug 4, 1990 was noted on the cross-index plat and is assigned page No. 4282, in book No. _____

Janet BT Sugil by Bill Bruckhoff
County Official

P-17 30 N 30 W
Cross Index No. _____ T. _____ R. _____ PMM



• - corner this sheet