

INSTRUCTIONS

1. Original and/or subsequent record used to evaluate the corner position.
2. Description of evidence found, note discrepancies in the record, state method of establishing lost or obliterated corners.
3. Description of monument and accessories set to perpetuate the corner position.
4. Sketch of corner, show all pertinent data which can best be shown in a sketch example, corner marking, topography ties, position of accessories, etc.
5. Certification must be signed and sealed by Land Surveyor registered in the State of Montana.
6. Fill in Cross Index & Section Diagram at bottom of sheet.

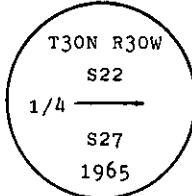
CERTIFIED CORNER RECORDATION

Corner 1/4 Cor. of Secs. 22 & 27 T. 30 N. R. 30 W. P.M.M. Lincoln County

I. 1904 G.L.O. original record by G. W. Fessenden and R. Y. Lyman: Set a stone monument and marked two fir bearing trees.

1965 B.L.M. remonumentation record by D. G. Lindenberg: "The 1/4 sec. cor. of secs. 22 and 27, monumented with a slate stone, 20x12x10 ins., loosely set, marked 1/4 on the N. side and witnessed by the original bearing trees. At the corner point

Set an iron post, 30 ins. long, 2 1/2 ins. diam., 26 ins. in the ground, with brass cap mkd.



from which

The original bearing trees:

A fir, 15 ins. diam., bears S78 1/2° W, 50 lks. dist., mkd. with an overgrown blaze.
(Record: S71 1/2° W, 50 lks.)

A fir, 16 ins. diam., bears N60° W, 70 lks. dist., mkd. S22. (Record)

The new bearing trees:

A larch, 8 ins. diam., bears N58 3/4° E, 8 lks. dist., mkd. 1/4 S22 BT.

A larch, 9 ins. diam., bears S64 1/2° W, 20 lks. dist., mkd. 1/4 S27 BT.

Bury the original stone alongside the iron post."

II. Found a 2 1/2 ins. diam. iron pipe, 5 ins. out of ground, with a 3 1/4 ins. diam., B.L.M. brass cap marked as shown above, from which

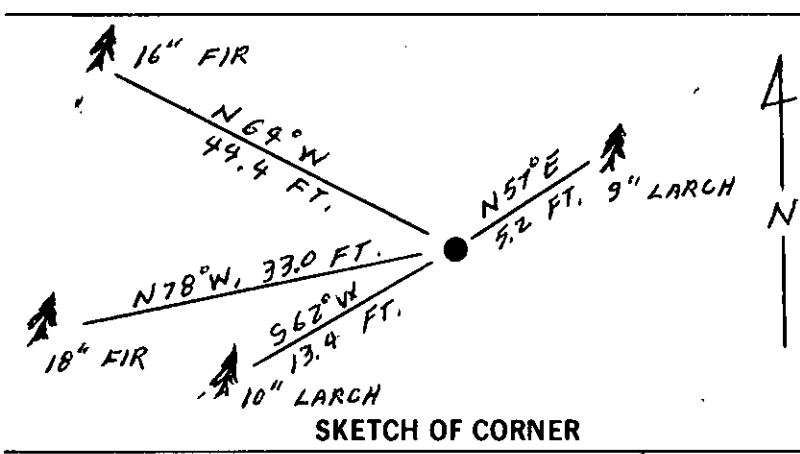
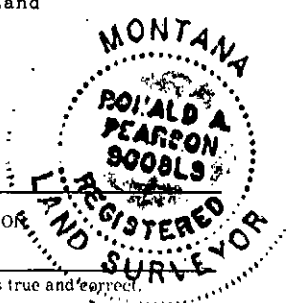
A larch, 9 ins. diam., bears N57° E, 5.2 ft. (7.9 lks.) dist., overgrown blaze.

A larch, 10 ins. diam., bears S62° W, 13.4 ft. (20.3 lks.) dist., overgrown blaze.

A douglas fir, 18 ins. diam., bears S78° W, 33.0 ft. (50 lks.) dist., overgrown blaze.

A douglas fir, 16 ins. diam., bears N64° W, 44.4 ft. (67 lks.) dist., scribe partially visible.

III. Set a 6 ft. galvanized steel guard post with Land Survey Marker and Property Boundary decals, West, 3 ft. Painted red bands around the bearing trees and attached Bearing Tree and Land Survey Monument signs. Magnetic Declination: 21° 30' East

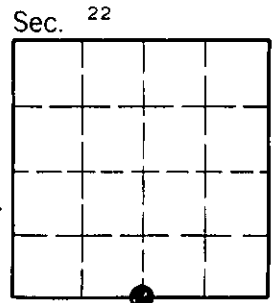


SKETCH OF CORNER

CERTIFICATION
 Gary C. Crismon
 I. certify the information shown herein is true and correct.
 Signature of Ground Party Chief
 Ronald A. Pearson
 I. certify that this Corner Record correctly represents work performed by me or under my direction in compliance with the "Corner Recordation Act" (70-22-101, et seq., M.C.A.)
 Signature of Surveyor & Seal
 Date: 6/19/90 Reg. No. 9008LS
 U.S. FOREST SERVICE
 Employer:

Office of Clerk and Recorder, County of Lincoln. This "corner record" was filed for record on Aug 4, 1990 was noted on the cross-index plat and is assigned page No. 4279, in book No. _____

Janet BF Sigurdson
 County Official



R-15 30 N 30 W
 Cross Index No. _____ T. _____ R. _____ PMM