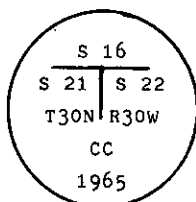


1. Original and/or subsequent record used to evaluate the corner position.
2. Description of evidence found, note discrepancies in the record, state method of establishing lost or obliterated corners.
3. Description of monument and accessories set to perpetuate the corner position.
4. Sketch of corner, show all pertinent data which can best be shown in a sketch example, corner marking, topography ties, position of accessories, etc.
5. Certification must be signed and sealed by Land Surveyor registered in the State of Montana.
6. Fill in Cross Index & Section Diagram at bottom of sheet.

Corner _____ N.E. COR. SEC 21 _____ T. _____ 30 N., _____ R. _____ 30 W., _____ P.M.M. _____ LINCOLN _____ County

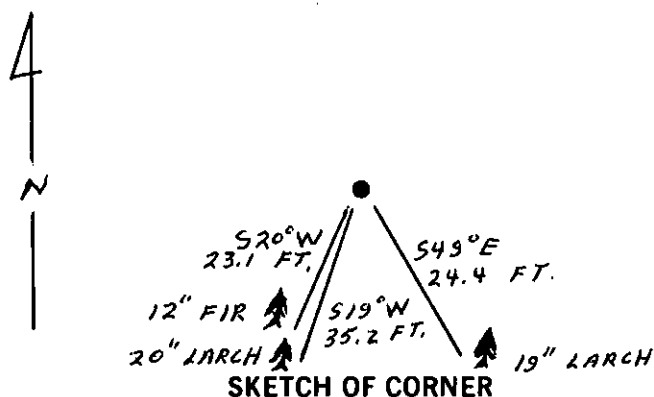
- Set a iron post, 30 ins. long, 2 1/2 ins. diam., 26 ins. in the ground, with a brass cap mkd.



Bury the original stone alongside the iron post.

- A larch, 20 ins. diam., bears S. 19° W., 35.2 ft. (53 lks.) dist., with an overgrown scribe.

- III. Set a 6 ft. galvanized steel guard post, with a "Survey Marker" decal attached, 3 ft East from the corner. painted red bands around the bearing trees and attached "BT" and "Land Survey Mounment" signs.
Magnetic Declination: 20° 30' East



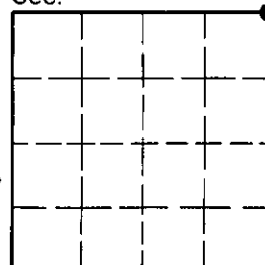
Employer: _____

County Official

30 N 30 W

Cross Index No. _____ T. _____ R. _____ PMM

Sec 21



- - corner this sheet