

## INSTRUCTIONS

1. Original and/or subsequent record used to evaluate the corner position.
2. Description of evidence found, note discrepancies in the record, state method of establishing lost or obliterated corners.
3. Description of monument and accessories set to perpetuate the corner position.
4. Sketch of corner, show all pertinent data which can best be shown in a sketch example, corner marking, topography ties, position of accessories, etc.
5. Certification must be signed and sealed by Land Surveyor registered in the State of Montana.
6. Fill in Cross Index & Section Diagram at bottom of sheet.

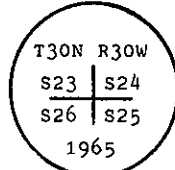
## CERTIFIED CORNER RECORDATION

Corner of Secs. 23, 24, 25, 26 T. 30 N., R. 30 W., P.M.M. Lincoln County

- I. 1904 G.L.O. original record by G. W. Fessenden and R. Y. Lyman: Set a stone monument; marked a fir and tamarack for bearing trees.

1965 B.L.M. remonumentation record by D. G. Lindenberg: "The cor. of secs. 23, 24, 25, and 26, monumented with a slate stone, 18x6x6 ins. firmly set, marked with 2 notches on the S and 1 notch on the E edges and witnessed by the original bearing trees. At the corner point

Set an iron post, 30 ins. long, 2 1/2 ins. diam., 26 ins. in the ground, with brass cap mkd.



from which

The original bearing trees:

A larch, 15 ins. diam., bears N23 1/4° E, 121 lks. dist., mkd. S24 (Record: N23 1/4° E, 131 lks.)

A fir, 28 ins. diam., bears S44 1/4° E, 118 lks. dist., mkd. illegibly. (Record)

The new bearing trees:

A fir, 19 ins. diam., bears N46 1/2° E, 127 lks. dist., mkd. T30N R30W S24 BT.

A pine, 10 ins. diam., bears S23° E, 68 lks. dist., mkd. T30N R30W S25 BT.

A pine, 16 ins. diam., bears S64° W, 85 lks. dist., mkd. T30N R30W S26 BT.

A pine, 16 ins. diam., bears N40° W, 116 lks. dist., mkd. T30N R30W S23 BT.

Bury the original stone alongside the iron post."

- II. Found a 2 1/2 ins. diam. iron pipe, 4 ins. out of the ground, with a 3 1/4 ins. diam. brass cap marked as shown above, from which

A douglas fir, 24 ins. diam., bears N48° E, 88.4 ft. (133.9 lks.) dist., overgrown scribe blaze. (Record: N46 1/2° E, 127 lks.)

A snag, 16 ins. diam., bears N23° E, 80.4 ft. (121.8 lks.) dist., mkd. partial BT.

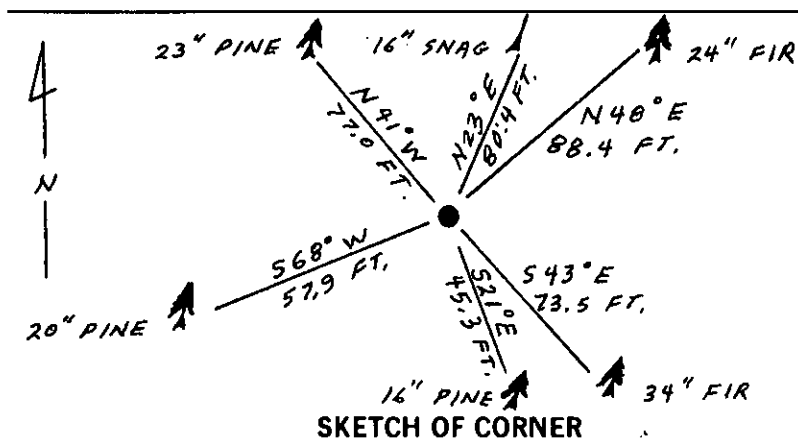
A douglas fir, 34 ins. diam., bears S43° E, 73.5 ft. (111.4 lks.) dist., mkd. 25. (Record: S44 1/4° E, 118 lks.)

A ponderosa pine, 16 ins. diam., bears S21° E, 45.3 ft. (68.6 lks.) dist., overgrown scribe blaze.

A ponderosa pine, 20 ins. diam., bears S68° W, 57.9 ft. (87.7 lks.) dist., overgrown scribe blaze. (Record: S64° W, 85 lks.)

A ponderosa pine, 23 ins. diam., bears N41° W, 77.0 ft. (116.7 lks.) dist., overgrown scribe blaze.

- III. Set a 6 ft. galvanized steel guard post with Land Survey Marker and Property Boundary decals, West, 3 ft. Painted red bands around the bearing trees and attached Bearing Tree and Land Survey Monument signs. Magnetic Declination: 21° 30' East



CERTIFICATION  
Gary C. Crismon

I. certify the information shown herein is true and correct.

*Gary C. Crismon*  
Signature Ground Party Chief  
Ronald A. Pearson

I. certify that this Corner Record correctly represents and is not contradicted by me or under my direction in compliance with the Corner Recordation Act" (70-22-101, et seq., M.C.A.)

*Ronald A. Pearson*  
Signature of Surveyor & Seal

Date: 6/20/90 Reg. No. 9008LS  
U.S. FOREST SERVICE

Employer:

Office of Clerk and Recorder, County of Lincoln. This "corner record" was filed for record on Aug 6, 1990 was noted on the cross-index plat and is assigned page No. 4277, in book No. \_\_\_\_\_

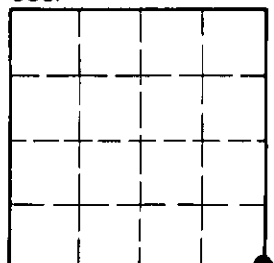
*Janet D. Sugar*  
County Official

R-21

30 N 30 W

Cross Index No. T. R. P.M.M.

Sec. 23



• - corner this sheet