

**INSTRUCTIONS**

1. Original and/or subsequent record used to evaluate the corner position.
2. Description of evidence found, note discrepancies in the record, state method of establishing lost or obliterated corners.
3. Description of monument and accessories set to perpetuate the corner position.
4. Sketch of corner, show all pertinent data which can best be shown in a sketch example, corner marking, topography ties, position of accessories, etc.
5. Certification must be signed and sealed by Land Surveyor registered in the State of Montana.
6. Fill in Cross Index & Section Diagram at bottom of sheet.

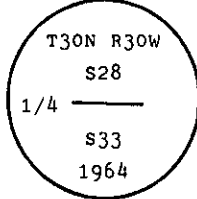
**CERTIFIED CORNER RECORDATION**

Corner 1/4 Cor. of Secs. 28 & 33 T. 30 N. R. 30 W. Lincoln County

1904 G.L.O. original record by G. W. Pessenden and R. Y. Lyman: Set a fir post as monument and marked two fir bearing trees.

1964 B.L.M. remonumentation record by G. F. Pittman et al: "The 1/4 sec. cor. of secs. 28 and 33, monumented with a disintegrated wooden post, firmly set in the ground, and witnessed by the remains of the original bearing trees. At the corner point

Set an iron post, 30 ins. long, 2 1/2 ins. diam., 27 ins. in the ground, with brass cap mkd.



from which

The remains of the original bearing trees:

- A dead larch, 16 ins. diam., bears N36 1/4° E, 40 lks. dist., mkd. 1/4 S28 BT. (Record)
- A fir, 18 ins. diam., bears S26° W, 9 lks. dist., mkd. with an overgrown blaze. (Record)

The new bearing tree:

- A larch, 6 ins. diam., bears N18° W, 57 lks. dist., mkd. 1/4 S28 BT.

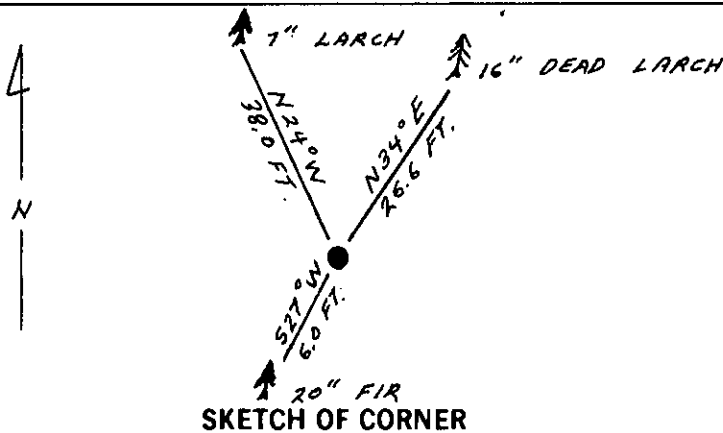
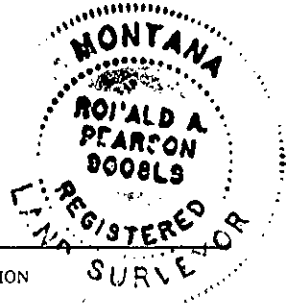
Bury the remains of the original wooden post alongside of the iron post."

II. Found a 2 1/2 ins. diam. iron pipe, 5 ins. out of ground, with a 3 1/4 ins. diam. brass cap mkd. as shown above, from which

- A dead larch, 16 ins. diam., bears N34° E, 26.6 ft. (40.3 lks.) dist., mkd. 1/4 S28 BT. (Record: fir)
- A fir, 20 ins. diam., bears S27° W, 6.0 ft. (9.1 lks.) dist., mkd. with an overgrown scribe blaze.
- A larch, 7 ins. diam., bears N24° W, 38.0 ft. (57.5 lks.) dist., mkd. 1/4 S28 BT.

All bearing trees have 1985 Survey Monument and Bearing Tree signs. Found a 6 ft. galvanized steel guard post with Land Survey Marker decal, North, 3 ft.

III. Reset the 6 ft. galvanized steel guard post and added Property Boundary decal, East, 3 ft. Magnetic Declination: 21° 30' East



**CERTIFICATION**

1. Jane Eby  
certify the information shown herein is true and correct.

Jane Eby  
Signature Ground Party Chief  
Ronald A. Pearson

2. Ronald A. Pearson  
certify that this Corner Record correctly represents work performed by me or under my direction in compliance with the "Corner Recordation Act" (70-22-101, et seq., M.C.A.)

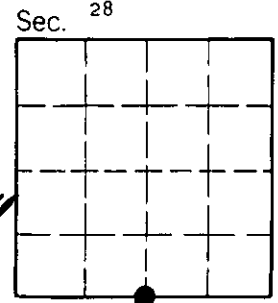
Ronald A. Pearson  
Signature of Surveyor & Seal

Date: 6/20/90 Reg. No. 9008LS  
U.S. FOREST SERVICE

Employer: \_\_\_\_\_

Office of Clerk and Recorder, County of Lincoln. This "corner record" was filed for record on Aug 6, 1990 was noted on the cross-index plat and is assigned page No. 4271, in book No. \_\_\_\_\_

Jane Eby  
County Official



V-11      30 N      30 W  
Cross Index No. \_\_\_\_\_ T. \_\_\_\_\_ R. \_\_\_\_\_ P.M.M.

• - corner this sheet