

INSTRUCTIONS

1. Original and/or subsequent record used to evaluate the corner position.
2. Description of evidence found, note discrepancies in the record, state method of establishing lost or obliterated corners.
3. Description of monument and accessories set to perpetuate the corner position.
4. Sketch of corner, show all pertinent data which can best be shown in a sketch example, corner marking, topography ties, position of accessories, etc.
5. Certification must be signed and sealed by Land Surveyor registered in the State of Montana.
6. Fill in Cross Index & Section Diagram at bottom of sheet.

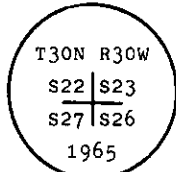
CERTIFIED CORNER RECORDATION

Corner of Secs. 22, 23, 26, 27 T. 30 N., R. 30 W., Lincoln County

- I. 1904 G.L.O. original record by G. A. Fessenden and R. Y. Lyman: Set a stone monument and marked four tamarack bearing trees.

1965 B.L.M. remonumentation record by D. G. Lindenberg: "The cor. of secs. 22, 23, 26, and 27, monumented with a limestone, 20x10x6 ins., firmly set, marked with 2 notches on the S and E edges and witnessed by the remains of the original bearing trees. At the corner point

Set an iron post, 30 ins. long, 2 1/2 ins. diam., 26 ins. in the ground, with brass cap mkd.



from which

The original bearing trees:

- A larch, 11 ins. diam., bears N55 1/2° E, 40 lks. dist., with an overgrown blaze. (Record)
- A snag, 10 ins. diam., bears S53 3/4° E, 40 lks. dist., mkd. T30N R30W S26 BT. (Record)
- A snag, 9 ins. diam., bears S42° W, 25 lks. dist., mkd. T30N R30W S27 BT. (Record)
- A larch, 8 ins. diam., bears N14 1/2° W, 30 lks. dist., with an overgrown blaze. (Record)

The new bearing trees:

- A larch, 9 ins. diam., bears S35 1/4° E, 50 lks. dist., mkd. T30N R30W S26 BT.
- A larch, 8 ins. diam., bears S81 3/4° W, 40 lks. dist., mkd. T30N R30W S27 BT.

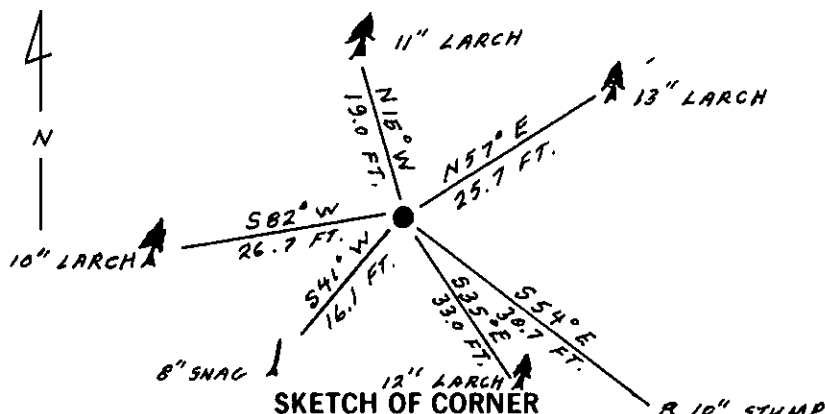
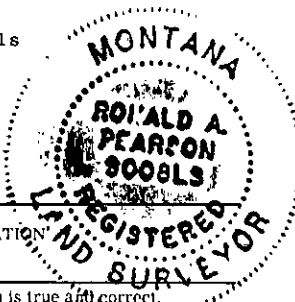
Bury the original stone alongside the iron post."

- II. Found a 2 1/2 ins. diam. iron pipe, 3 ins. out of the ground with a 3 1/4 ins. diam. brass cap marked as shown above, from which

- A larch, 13 ins. diam., bears N57° E, 25.7 ft. (38.9 lks.) dist., overgrown scribe blaze.
- A larch, 12 ins. diam., bears S35° E, 33.0 ft. (50 lks.) dist., overgrown scribe blaze.
- A snag, 8 ins. diam., bears S41° W, 16.1 ft. (24.4 lks.) dist., mkd. 30W S27 BT.
- A larch, 10 ins. diam., bears S82° W, 26.7 ft. (40.4 lks.) dist., overgrown scribe blaze.
- A larch, 11 ins. diam., bears N15° W, 19.0 ft. (28.8 lks.) dist., overgrown scribe blaze.
- A stump, 10 ins. diam., bears S54° E, 30.7 ft. (46.5 lks.) dist., log portion mkd.
- T30N R30W S26 BT visible. (Record: S53 3/4° E, 40 lks.)

- III. Attached Land Survey Monument and Bearing Tree signs on bearing trees.

Set a 6 ft. galvanized steel guard post with Land Survey Marker and Property Boundary decals North, 3 ft. Magnetic Declination: 21° 30' East



CERTIFICATION
Gary C. Crismon

I, _____
certify the information shown herein is true and correct.

Gary C. Crismon
Signature Ground Party Chief
Ronald A. Pearson

I, _____
certify that this Corner Record correctly represents work performed by me or under my direction in compliance with the "Corner Recordation Act" (70-22-101, et seq., M.C.A.)

Ronald A. Pearson
Signature of Surveyor & Seal

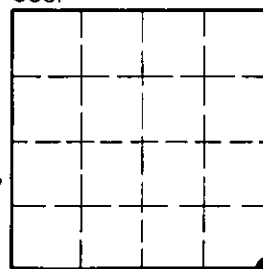
Date: 6/19/90 Reg. No. 9008LS
U.S. FOREST SERVICE

Employer: _____

Office of Clerk and Recorder, County of Lincoln. This "corner record" was filed for record on Aug 6, 1990 was noted on the cross-index plat and is assigned page No. 4270, in book No. _____

R-17 30 N 30 W
Cross Index No. _____ T. _____ R. _____ PMM

Sec. 22



• - corner this sheet