

## INSTRUCTIONS

1. Original and/or subsequent record used to evaluate the corner position.
2. Description of evidence found, note discrepancies in the record, state method of establishing lost or obliterated corners.
3. Description of monument and accessories set to perpetuate the corner position.
4. Sketch of corner, show all pertinent data which can best be shown in a sketch example, corner marking, topography ties, position of accessories, etc.
5. Certification must be signed and sealed by Land Surveyor registered in the State of Montana.
6. Fill in Cross Index & Section Diagram at bottom of sheet.

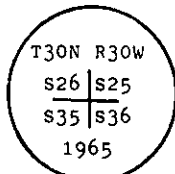
## CERTIFIED CORNER RECORDATION

Corner of Secs. 25, 26, 35, 36 T. 30 N., R. 30 W., Lincoln County

- I. 1904 G.L.O. original record by G. W. Fessenden and R. Y. Lyman: Set a stone monument; marked two firs and two tamaracks for bearing trees.

1965 B.L.M. remonumentation record by D. G. Lindenberg: "The cor. of secs. 25, 26, 35, and 36, monumented with a slate stone, 18x12x6 ins., firmly set, marked with 1 notch on the S and E edges and witnessed by the remains of the original bearing trees. At the corner point

Set an iron post, 30 ins. long, 2 1/2 ins. diam., 26 ins. in the ground, with brass cap mkd.



from which

The original bearing trees:

- A larch, 18 ins. diam., bears N77 1/2° E, 31 lks. dist., with an overgrown blaze. (Record)
- A fir, 18 ins. diam., bears S19 1/2° E, 110 lks. dist., with an overgrown blaze. (Record)
- A snag, 16 ins. diam., bears S31 1/2° W, 29 lks. dist., mkd. T30N R30W S35 BT. (Record)
- A larch, 18 ins. diam., bears N77° W, 52 lks. dist., with an overgrown blaze. (Record)

The new bearing tree:

- A fir, 7 ins. diam., bears S29 1/2° W, 32 lks. dist., mkd. T30N R30W S35 BT.

Bury the original stone alongside the iron post."

- II. Found a 2 1/2 ins. diam. iron post, 4 ins. above the ground, with a 3 1/4 ins. diam. brass cap marked as shown above, from which

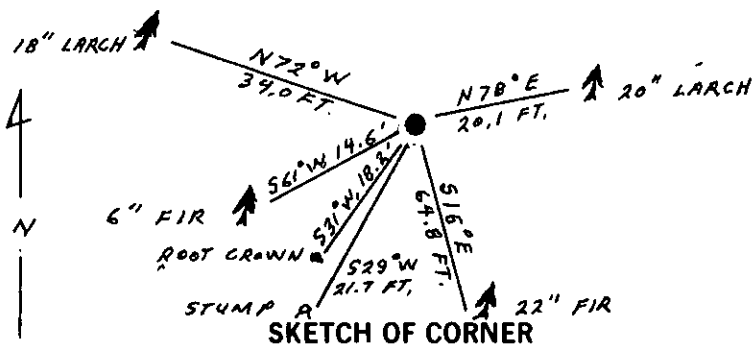
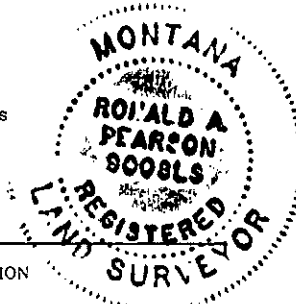
- A larch, 20 ins. diam., bears N78° E, 20.1 ft. (30 lks.) dist., mkd. with an overgrown scribe blaze.
- A fir, 22 ins. diam., bears S15° E, 64.8 ft. (98 lks.) dist., mkd. with an overgrown scribe blaze.
- A root crown, bears S31° W, 18.2 ft. (28 lks.) dist., log alongside mkd. T30N R30W S35 BT.
- A rotten stump, bears S29° W, 21.7 ft. (33 lks.) dist., log alongside mkd. T30N R30W S35 BT.
- A larch, 18 ins. diam., bears N72° W, 34.0 ft. (52 lks.) dist., mkd. with an overgrown scribe blaze.

- III. Established one new bearing tree:

- A fir, 6 ins. diam., bears S61° W, 14.6 ft. dist., mkd. T30N R30W S35 BT.

Attached Land Survey Monument and Bearing Tree signs on bearing trees.

Set a 6 ft. galvanized steel guard post with Land Survey Marker and Property Boundary decals North, 3 ft. Magnetic Declination: 21° 30' East



SKETCH OF CORNER

CERTIFICATION

Jane Eby

I, \_\_\_\_\_ certify the information shown herein is true and correct.

*Jane Eby*  
Signature Ground Party Chief  
Ronald A. Pearson

I, \_\_\_\_\_ certify that this Corner Record correctly represents work performed by me or under my direction in compliance with the "Corner Recordation Act" (70-22-101, et seq., M.C.A.)

*Ronald A. Pearson*  
Signature of Surveyor & Seal

Date: 6/21/90 Reg. No. 9008LS  
U.S. FOREST SERVICE

Employer: \_\_\_\_\_

Office of Clerk and Recorder, County of Lincoln. This "corner record" was filed for record on Aug 6, 1990 was noted on the cross-index plat and is assigned page No. 4269, in book No. \_\_\_\_\_

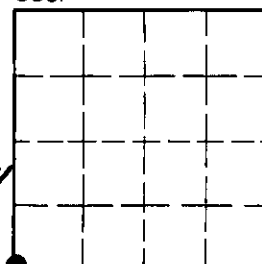
*Janet H. Sigel by Eric Buehler*  
County Official

V-21

30 N 30 W

Cross Index No. \_\_\_\_\_ T. \_\_\_\_\_ R. \_\_\_\_\_ PMM

Sec. 25



• - corner this sheet