

INSTRUCTIONS

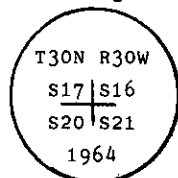
1. Original and/or subsequent record used to evaluate the corner position.
2. Description of evidence found, note discrepancies in the record, state method of establishing lost or obliterated corners.
3. Description of monument and accessories set to perpetuate the corner position.
4. Sketch of corner, show all pertinent data which can best be shown in a sketch example, corner marking, topography ties, position of accessories, etc.
5. Certification must be signed and sealed by Land Surveyor registered in the State of Montana.
6. Fill in Cross Index & Section Diagram at bottom of sheet.

CERTIFIED CORNER RECORDATION

Corner of Secs. 16, 17, 20 & 21 T. 30 N., R. 30 W., Lincoln County

- I. 1904 G.L.O. record by G. W. Fessenden and R. G. Lyman: Set a stone monument and mkd. two pines and two firs as bearing trees.

1964 B.L.M. record by G. F. Pittman et al: "The cor. of secs. 16, 17, 20 and 21, monumented with a slate stone, 18x12x4 ins., loosely set and mkd. with 4 grooves on the E. and 3 grooves on the S. faces, and witnessed by the remains of three of the original bearing trees. At the corner point, set an iron post, 30 ins. long, 2 1/2 ins. diam., 27 ins. in the ground, with brass cap mkd.



from which

The remains of the original bearing trees:

- A stump hole, bears S50 1/2° E, 47 lks. dist. remains of tree lying on ground, mkd. T30N R30W S21 BT (record).
- A stump hole, bears S1° W, 59 lks. dist., remains of tree lying on ground, mkd. T30N R30W S20 BT. (record).
- A stump hole, bears N52° W, 11 lks. dist., remains of tree lying on ground, mkd. T30N R30W S17 BT. (record).

The new bearing trees:

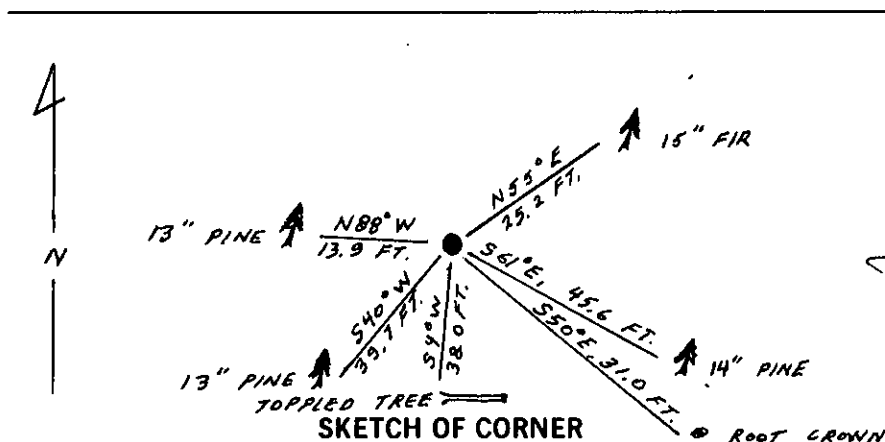
- A fir, 10 ins. diam., bears N55° E, 38 lks. dist., mkd. T30N R30W S16 BT.
- A pine, 12 ins. diam., bears S60° E, 69 lks. dist., mkd. T30N R30W S21 BT.
- A pine, 8 ins. diam., bears S41° W, 60 lks. dist., mkd. T30N R30W S20 BT.
- A pine, 10 ins. diam., bears N88° W, 21 lks. dist., mkd. T30N R30W S17 BT.

Bury the original stone alongside of the iron post."

- II. Found a 3 1/4 in. diam. B.L.M. brass cap, marked as shown above, on 2 1/2 in. diam. iron pipe, 6 ins. out of the ground, from which

- A douglas fir, 15 ins. diam., bears N55° E, 25.2 ft. (38 lks.) dist., mkd. T30N R30W S16 BT.
- A root crown, bears S50° E, 31.0 ft. (47 lks.) dist., no scribe visible.
- A ponderosa pine, 14 ins. diam., bears S61° E, 45.6 ft. (69 lks.) dist., mkd. T30N R30W S21 BT.
- A toppled tree, 10 ins. diam., bears S4° W, 38.0 ft. (58 lks.) dist., axe marks for scribe blaze.
- A ponderosa pine, 12 ins. diam., bears S40° W, 39.7 ft. (60 lks.) dist., mkd. BT.
- A ponderosa pine, 13 ins. diam., bears N88° W, 13.9 ft. (21 lks.) dist., mkd. T30N R30W S17 BT.

- III. Set a guard post, with Survey Marker and Property Boundary decals attached, 3 ft. North from corner
Painted red bands around each bearing tree and attached Land Survey Monument and Bearing Tree signs.



CERTIFICATION
Gary C. Crismon
I, Ronald A. Pearson
certify the information shown herein is true and correct.
Signature Ground Party Chief
Ronald A. Pearson
I, Ronald A. Pearson
certify that this Corner Record correctly represents work performed by me or under my direction in compliance with the Corner Recordation Act" (70-22-101, et seq., M.C.A.)
Signature of Surveyor & Seal
Date: 6/13/90 Reg. No. 9008LS
Employer: U.S. FOREST SERVICE

Office of Clerk and Recorder, County of Lincoln. This "corner record" was filed for record on Aug 6, 1990 was noted on the cross-index plat and is assigned page No. 4268, in book No. Grant BT Aug 6 by Bill Buckell

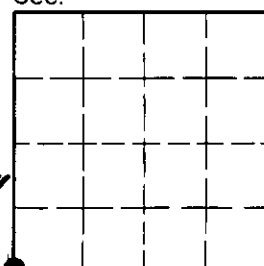
County Official

N-9

30 N 30 W

Cross Index No. T. R. PMM

Sec. 16



• - corner this sheet