

INSTRUCTIONS

1. Original and/or subsequent record used to evaluate the corner position.
2. Description of evidence found, note discrepancies in the record, state method of establishing lost or obliterated corners.
3. Description of monument and accessories set to perpetuate the corner position.
4. Sketch of corner, show all pertinent data which can best be shown in a sketch example, corner marking, topography ties, position of accessories, etc.
5. Certification must be signed and sealed by Land Surveyor registered in the State of Montana.
6. Fill in Cross Index & Section Diagram at bottom of sheet.

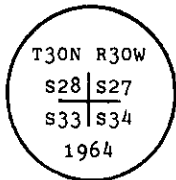
CERTIFIED CORNER RECORDATION

Corner of Secs. 27, 28, 33 & 34 T. 30 N. R. 30 W. P.M.M. Lincoln County

I. 1904 G.L.O. record by G. W. Fessenden and R. Y. Lyman: Set a stone and marked four bearing trees.

1964 B.L.M. record by G. F. Pittman et al: "The cor. of secs. 27, 28, 33 and 34, monumented with a slate stone, 12x10x6 ins., loosely set and mkd. with 3 grooves on the E. and 1 groove on the S. faces and witnessed by the remains of three of the original bearing trees. At the corner point

Set an iron post, 30 ins. long, 2 1/2 ins. diam., 27 ins. in the ground, with brass cap mkd.



from which

The remains of the original bearing trees:

- A stump, 8 ins. diam., bears N21° E, 40 lks. dist., mkd. T30N R30W S27 BT. (Record)
- A fir, 8 ins. diam., bears S82° E, 7 lks. dist., mkd. with an overgrown blaze. (Record)
- A stump, 20 ins. diam., bears S21° W, 7 lks. dist., mkd. with an overgrown blaze. (Record)

The new bearing trees:

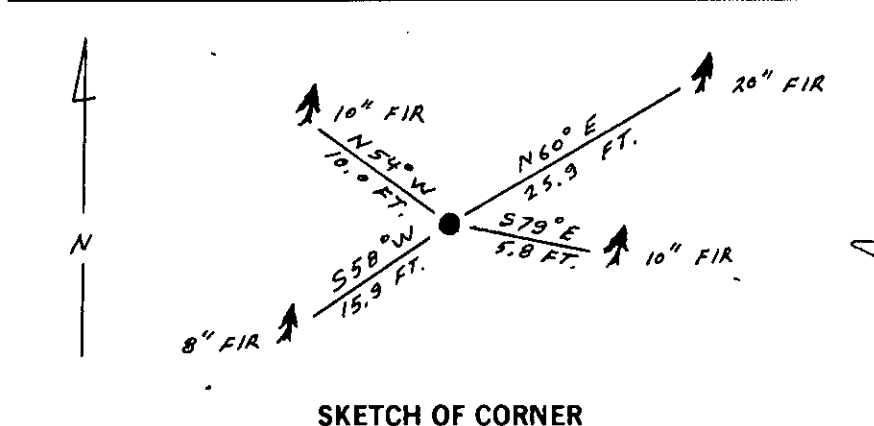
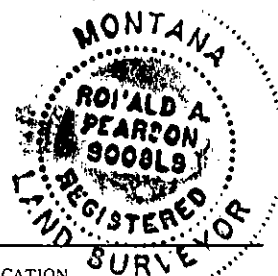
- A fir, 6 ins. diam., bears N60° E, 39 lks. dist., mkd. T30N R30W S27 BT.
- A fir, 5 ins. diam., bears S55° W, 25 lks. dist., mkd. T30N R30W S33 BT.
- A fir, 7 ins. diam., bears N55° W, 15 lks. dist., mkd. T30N R30W S28 BT.

Bury the original stone alongside of the iron post.

II. Found a 2 1/2 ins. diam. iron pipe, 4 ins. out of ground with a 3 1/4 ins. diam. brass cap mkd. as shown, from which

- A douglas fir, 20 ins. diam., bears N60° E, 25.9 ft. (39 lks.) dist., scribe blaze pitched over.
- A douglas fir, 10 ins. diam., bears S79° E, 5.8 ft. (9 lks.) dist., scribe blaze overgrown.
- A douglas fir, 8 ins. diam., bears S58° W, 15.9 ft. (24 lks.) dist., scribe blaze overgrown.
- A douglas fir, 10 ins. diam., bears N54° W, 10.0 ft. (15 lks.) dist., scribe blaze overgrown.

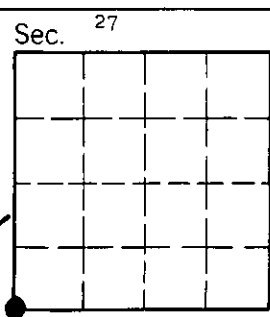
A steel guard post with Survey Marker decal, 2.5 ft. West
 Red bands around each bearing tree, Land Survey Monument and Bearing Tree signs were posted.
 Magnetic Declination: 20° 30' East



SKETCH OF CORNER

CERTIFICATION,
 Gary C. Crismon
 I, _____
 certify the information shown herein is true and correct.
Gary C. Crismon
 Signature Ground Party Chief
 Ronald A. Pearson
 I, _____
 certify that this Corner Record correctly represents work performed by me or under my direction in compliance with the "Corner Recordation Act" (70-22-101, et seq., M.C.A.)
Ronald A. Pearson
 Signature of Surveyor & Seal
 Date: 6/13/90 Reg. No. 9008LS
 U.S. FOREST SERVICE
 Employer: _____

Office of Clerk and Recorder, County of Lincoln. This "corner record" was filed for record on Aug 6, 1990 was noted on the cross-index plat and is assigned page No. 4267, in book No. _____
Janet B. Sugilby
 County Official



V-13 Cross Index No. _____ T. _____ R. _____ P.M.M. • - corner this sheet