

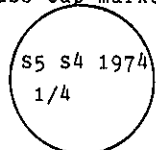
INSTRUCTIONS

1. Original and/or subsequent record used to evaluate the corner position.
2. Description of evidence found. note discrepancies in the record. state method of establishing lost or obliterated corners.
3. Description of monument and accessories set to perpetuate the corner position.
4. Sketch of corner, show all pertinent data which can best be shown in a sketch example. corner marking, topography ties, position of accessories, etc.
5. Certification must be signed and sealed by Land Surveyor registered in the State of Montana.
6. Fill in Cross Index & Section Diagram at bottom of sheet.

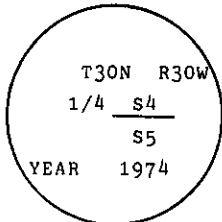
CERTIFIED CORNER RECORDATION

Corner W 1/4 CORNER SECTION 4 T. T30N. R. R30W. P.M.M. Lincoln County

- I. 1898 Original GLO record, by Paul Bickel: "Set a birch post 3 ft. long, 3 ins. square, 24 ins. in the ground, for 1/4 sec. corner, marked 1/4 S 5 on W face, S 4 on E face, from which
 A fir, 9 ins. diam., bears S89°55'E, 31 lks. dist. marked 1/4 S B.T.
 A fir, 12 ins. diam., bears S69°10'W, 23 lks. dist. marked 1/4 S B.T."
- 1975 Certified Corner Recordation No. 382, by J. Ninneman, 534ES: Steel rod - 3 B.T.'s reset previously.
- 1980 Certified Corner Recordation No. 738, by S. Staab, 5619S: Found 2 1/2 in. iron pipe with brass cap.
 Fir snag, N 69° E, 14.0 feet.
- 1989 Certified Corner Recordation No. 4046, by John Erickson, 3979S: Note: Corner Recordation was prepared in 1974. however was not filed until 1989, per COE records, Seattle, Wash.
- Found: 15" fir (snag) bearing S69° W, 22 lks., marked 1/4 S5 BT.
 Found: 22" tamarack bearing N60° E, 96 lks., marked 1/4 S4 BT (with Forest Service sign). No record.
 Found: 3/4" rebar loosely in the ground, but in the proper placement in relation to the bearing trees.
 Replaced the 3/4" rebar with a Corps of Engineers brass cap marked as shown



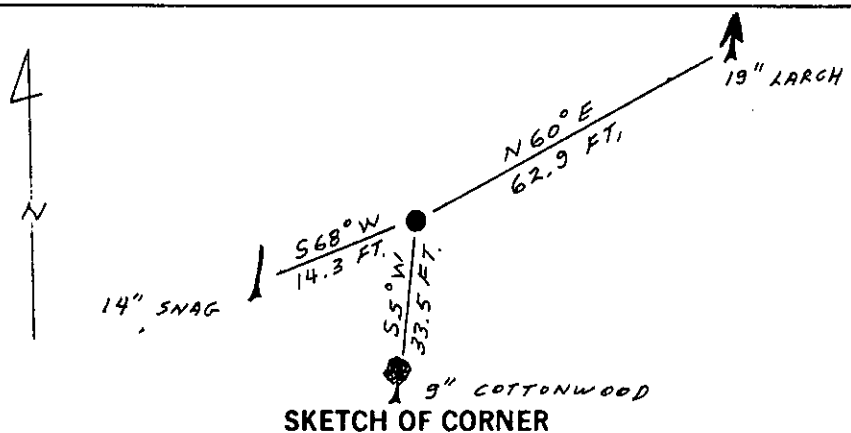
- II. I found a 3 1/2 in. diam. Corps of Engineers cap, on 1 1/2 in. iron pipe, 5 ins. above the ground, marked as shown below:



- from which:
 The original bearing trees
 A fir snag, 14 ins. diam., bears S68° W, 14.3 ft. (22 lks.) dist., with scribing 1/4 S5 visible.
 No evidence of the SE tree was found.
 The tree of no record called by J. Erickson:
 A larch, 19 ins. diam., bears N.60° E, 62.9 ft. (95 lks.) dist., with overgrown blaze 4 ft. above ground.

- III. Established one new bearing tree:
 A cottonwood, 9 ins. diam., bears S5° W, 33.5 ft. dist., bark scribed 1/4 S5 BT.

I set a 6 ft. galvanized steel guard post with a Survey Marker decal attached, 3 feet North of monument. I painted red bands around the bearing trees and attached BT and Survey Monument signs.
 Declination 19° East.



CERTIFICATION

1. Gary Crismon
 certify the information shown herein is true and correct.

Gary Crismon
 Signature Ground Party Chief

1. Alvah F. Hughes
 certify that this Corner Record correctly represents work performed by me or under my direction in compliance with the "Corner Recordation Act" (70-22-101, et seq., M.C.A.)

Alvah F. Hughes
 Signature of Surveyor & Seal

Date: 12/26/89 Reg. No. 73286

Employer: U.S. FOREST SERVICE

Office of Clerk and Recorder, County of Lincoln. This "corner record" was filed for record on Dec 29 1989 was noted on the cross-index plat and is assigned page No. 4192, in book No. _____

Janet B. Sugil by Deed Book
 County Official

Sec. 4

Cross Index No. C-9 T. 30N R. 30W P.M.M.