

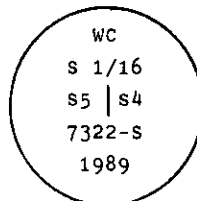
## INSTRUCTIONS

1. Original and/or subsequent record used to evaluate the corner position.
2. Description of evidence found, note discrepancies in the record, state method of establishing lost or obliterated corners.
3. Description of monument and accessories set to perpetuate the corner position.
4. Sketch of corner, show all pertinent data which can best be shown in a sketch example, corner marking, topography ties, position of accessories, etc.
5. Certification must be signed and sealed by Land Surveyor registered in the State of Montana.
6. Fill in Cross Index & Section Diagram at bottom of sheet.

## CERTIFIED CORNER RECORDATION

Corner WC S 1/16 Section 4 T. 30 N. R. 30 W. P.M.M. Lincoln County

- I. No history of the S 1/16 corner being set.
- II. The calculated S 1/16 corner position falls in the Kootenai River; therefore, I set a witness corner.
- III. From the calculated position of the 1/16th corner bearing  $S 0^{\circ} 11' E$ , 489.47 ft. dist., I set a 3/4 in. diam. x 30 ins. long aluminum rod, 25 ins. in the ground, with 3 1/4 in. diam. U.S.D.A. aluminum cap stamped as shown.



Established two bearing trees:

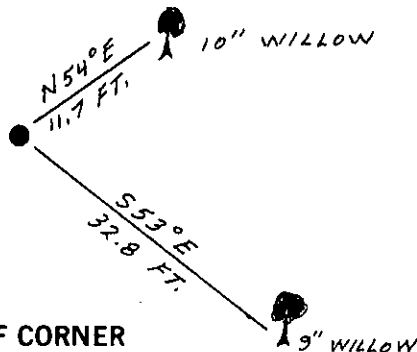
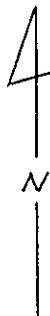
A willow, 10 ins. diam., bears  $N 54^{\circ} E$ , 11.7 ft. dist., scribed X at breast height and BT at base.

A willow, 9 ins. diam., bears  $S 53^{\circ} E$ , 32.8 ft. dist., scribed X at breast height and WC BT at base.

(No bearing objects available in section 5.)

I placed a collar of stone, 2 x 2 x 1 ft. high, around the monument. Set a 6 ft. galvanized steel guard post with Land Survey Marker decal, 3 ft. South of the monument. Painted a red band around each bearing tree and attached Survey Monument and Bearing Tree signs. Declination  $19^{\circ}$  East

This corner is on the west bank of the Kootenai River at the east edge of a grassy field.



SKETCH OF CORNER

## CERTIFICATION

I, Robbin Glazier  
certify the information shown herein is true and correct.

Signature Ground Party Chief,...

I, Alvah F. Hughes  
certify that this Corner Record correctly represents work performed by me or under my direction in compliance with the "Corner Recordation Act" (70-22-101, et seq. M.C.A.)

Signature of Surveyor & Seal

Date: 12/26/89 Reg. No. 7322-S

Employer: U.S. FOREST SERVICE

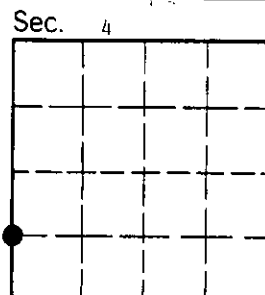
Office of Clerk and Recorder, County of Lincoln. This "corner record" was filed for record on Dec 29, 1989

was noted on the cross-index plat and is assigned page No. 4189 in

book No. \_\_\_\_\_

James H. Sigel by Sue Buckoff  
County Official Dep

Cross Index No. D-9 T. 30 N. R. 30 W. P.M.M.



• - corner this sheet