

INSTRUCTIONS

1. Original and/or subsequent record used to evaluate the corner position.
2. Description of evidence found, note discrepancies in the record, state method of establishing lost or obliterated corners.
3. Description of monument and accessories set to perpetuate the corner position.
4. Sketch of corner, show all pertinent data which can best be shown in a sketch example, corner marking, topography ties, position of accessories, etc.
5. Certification must be signed and sealed by Land Surveyor registered in the State of Montana.
6. Fill in Cross Index & Section Diagram at bottom of sheet.

CERTIFIED CORNER RECORDATION

Corner SW 1/16 Section 4 T. 30 N. R. 30 W. P.M.M. Lincoln County

- I. 1975 Certified Corner Recordation No. 382, by J. Ninneman, 534ES:
 Set a 1/2" x 24" Steel Rod with cap stamped J.N. 534 E.S.
 Lot Corner. BT's not scribed or posted.
- II. Found a 5/8" diam. rebar, with a 1" diam. cap marked JN 534ES.
- III. As a result of Mr. Ninneman's acceptance of different corner positions for the SW and NW section corners of section 4, I find the Ninneman rebar bears S2° 53' W, 5.2 ft. dist. from my calculated corner position. Therefore, I do not accept the Ninneman rebar as the true SW 1/16th. At the calculated position, I set a 3/4 in. diam. x 30 ins. long aluminum rod, with 3 1/4 in. diam. U.S.D.A. aluminum cap marked as shown.

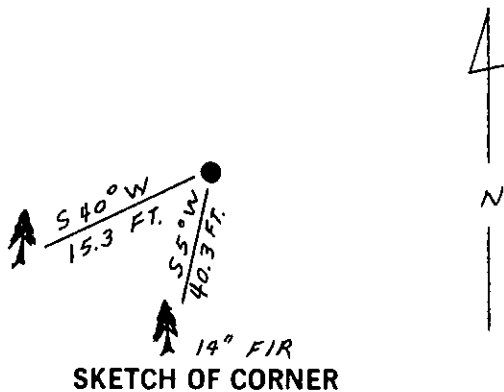
SW 1/16 S4
 7322-s
 1989

I established two new bearing trees:

- A douglas fir, 14 ins. diam., bears S 5° W, 40.3 ft. dist., scribed SW 1/16 BT.
- A douglas fir, 15 ins. diam., bears S 40° W, 15.3 ft. dist., scribed SW 1/16 BT.

Painted a red band around each bearing tree and attached Survey Monument and Bearing Tree signs.
 Set a 6 ft. galvanized steel guard post with Land Survey Marker decal, 2 ft. South of the monument.

Declination 19° E.



CERTIFICATION

I, Gary Crismon
 certify the information shown herein is true and correct.

Gary Crismon
 Signature Ground Party Chief

I, Alvah F. Hughes
 certify that this Corner Record correctly represents the information by me or under my direction in compliance with the "Corner Recordation Act" (70-22-101, et seq., M.C.A.)

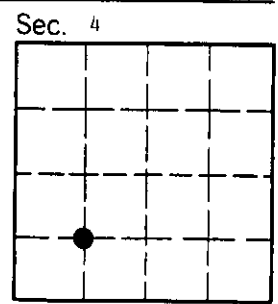
Alvah F. Hughes
 Signature of Surveyor & Seal

Date: 12/26/89 Reg. No. 7322-s

Employer: U.S. FOREST SERVICE

Office of Clerk and Recorder, County of Lincoln. This "corner record" was filed for record on Dec 29, 1989 was noted on the cross-index plat and is assigned page No. 4188, in book No. _____

Just BT Sigil by Del Busch
 County Official



Cross Index No. D-10 T. 30N R. 30W P.M.M.