

INSTRUCTIONS

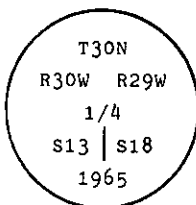
1. Original and/or subsequent record used to evaluate the corner position.
2. Description of evidence found, note discrepancies in the record, state method of establishing lost or obliterated corners.
3. Description of monument and accessories set to perpetuate the corner position.
4. Sketch of corner, show all pertinent data which can best be shown in a sketch example, corner marking, topography ties, position of accessories, etc.
5. Certification must be signed and sealed by Land Surveyor registered in the State of Montana.
6. Fill in Cross Index & Section Diagram at bottom of sheet.

CERTIFIED CORNER RECORDATION

Corner 1/4 Cor. of Sec. 18 30 N. 29 W.
1/4 Cor. of Sec. 13 T. 30 N. R. 30 W. P.M.M. Lincoln County

- I. 1898 G.L.O. original record by Paul S.A. Bickel: Set a stone monument and two bearing trees.

1965 B.L.M. remonumentation record by Duane C. Lindenberg: "The 1/4 sec. cor. of secs. 13 and 18, on the W bdy. of the Tp., monumented with a prophry stone (porphyry), 20 x 14 x 10 ins., firmly set, marked 1/4 on the W side and witnessed by the remains of the original bearing trees. At the corner point, set an iron post, 30 ins. long, 2 1/2 ins. diam., 26 ins. in the ground, with brass cap mkd.



from which

The original bearing trees:

- A rotted stump, bears N70 1/4° E, 12 lks. dist., no marks (Record)
A fir, 14 ins. diam., bears S26 10' W, 19 lks. dist., with on overgrown blaze. (Record)

The new bearing tree:

- A larch, 11 ins. diam., bears S80° E, 59 lks. dist., mkd. 1/4 S18 BT.

Bury the original stone alongside the iron post."

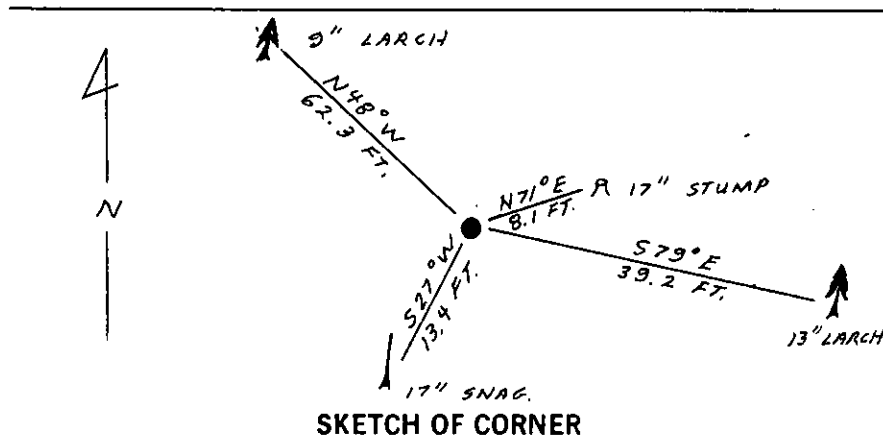
- II. Found, a 2 1/2 in. diam. iron pipe, 5 ins. out of the ground with a 3 1/4 in. diam., B.L.M. brass cap, marked as shown above, from which

- A stump portion, 17 ins. diam. by 2 1/2 ft. high, bears N71° E, 8.1 ft. (12.3 lks.) dist., no visible scribe. (G.L.O.)
A larch, 13 ins. diam., bears S79° E, 39.2 ft. (59.4 lks.) dist., scribe overgrown. (B.L.M.)
A fir snag, 17 ins. diam., bears S27° W, 13.4 ft. (20.3 lks.) dist., scribe 1/4 S is visible. (G.L.O.)

- III. Established one new bearing tree:

- A larch, 9 ins. diam., bears N48° W, 62.3 ft. dist., scribed 1/4 S13 BT.

Painted red bands around the bearing trees and attached Land Survey Monument and Bearing Tree signs.
Set a 6 ft. galvanized steel guard post with Land Survey Marker and Property Boundary decals, south, 3 ft.
Magnetic Declination: 20° 30' East



CERTIFICATION

1. Gary C. Crismon
certify the information shown herein is true and correct.

Gary C. Crismon
Signature Ground Party Chief

1. Alvah F. Hughes
certify that this Corner Record correctly represents work performed by me or under my direction in compliance with the "Corner Recordation Act" (70-22-101, et seq., M.C.A.)

Alvah F. Hughes
Signature of Surveyor & Seal

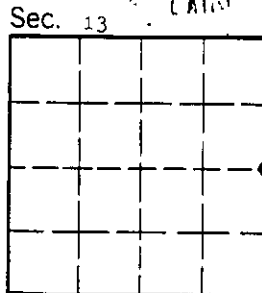
Date: 12/26/89 Reg. No. 7322-LS

Employer: U.S. FOREST SERVICE

Office of Clerk and Recorder, County of Lincoln. This "corner record" was filed for record on Dec 29, 1989

was noted on the cross-index plat and is assigned page No. 4186, in book No. _____

Cross Index No. L-25 T. 30 N R. 30 W P.M.M.



• corner this sheet