

CERTIFIED CORNER RECORDATION

Corner S 1/16 S25 T. 30 N. R. 30 W. P.M.M. Lincoln County

- I. Record: 1970 Certified Land Corner Recordation Book 1, Page 175 Lincoln County Records, by J.W. Ninneman 534ES." Set steel pin from which an 8" pine bears N61°W 5.5 Ft. scribed S1/16 BT posted a 10" pine bears N49°E 6.7 Ft. scribed S1/16."
- II. Found: A 5/8 diam. rebar which bears N31°02'46"E, 6.92 ft. dist. from the corner point determined by survey. Not accepted this survey.
- III. Perpetuation: At the corner point, determined by survey, set a 5/8 ins. diam. steel rebar 24 ins. long, 22 ins. in the ground, with a 3 1/4 ins. diam. Aluminum cap marked as shown below from which:

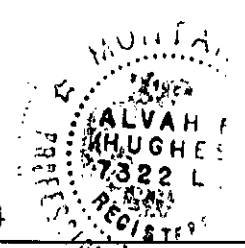
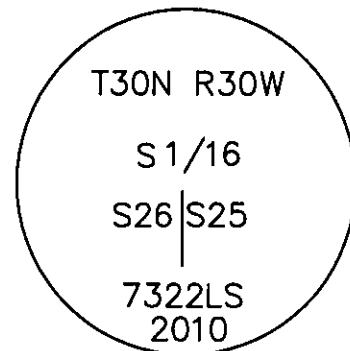
A Douglas fir, 15 ins. diam., bears N64°W, 41.70 ft. dist., scribed N 1/16 S26 BT.

A Larch, 19 ins. diam., bears N27°E, 58.50 ft. dist., scribed N 1/16 S25 BT.

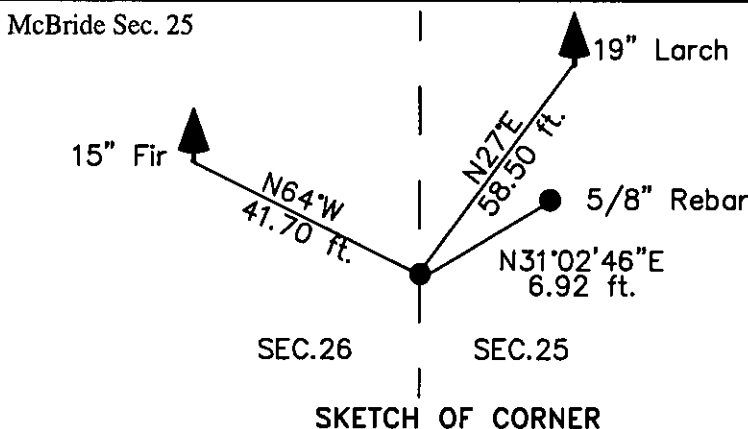
Painted faces and 6 in. wide red bands to all bearing trees and attached Land Survey Monument and Bearing Tree signs.

Magnetic declination: 18° East

Equipment used: Hand compass and loggers tape



Kootenai Surveyors Inc., 314 California Av., Libby, MT. 59923 (406) 293-4354



CERTIFICATION

I, Kelly Rooney
certify the information shown herein is true and correct.
Kelly Rooney
Signature Ground Party Chief

I, Alvah F. Hughes
certify that this Corner Record correctly represents work performed by me or under my direction in compliance with the "Corner Recordation Act" (70-22-101, et seq., M.C.A.)
Alvah F. Hughes
Signature of Surveyor & Seal

Date: 03/22/2010 Reg. No. 7322LS
Employer: Kootenai Surveyors Inc.

Office of Clerk and Recorder, County of Lincoln This "corner

record" 225240 BOOK: CCR CC&R'S PAGE: 11502 Pages: 1

STATE OF MONTANA LINCOLN COUNTY

was not RECORDED: 03/24/2010 2:25 KOI: CC&R'S

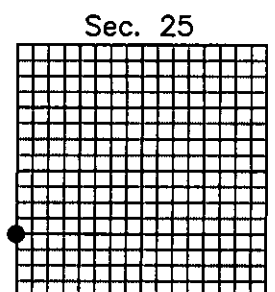
book No. TAMMY D. LAUER CLERK AND RECORDER

FEE: \$0.00

BY: *Julie Blomdahl, Deputy*
O: KOOTENAI SURVEYORS INC. P.O. BOX 393, LIBBY, MT 59923

Cross Index No. U-21 T. 30N R. 30W P.M., MT

Adopted July 1, 1981, Montana Board of Professional Engineers & Land Surveyors



• corner this sheet