

# CERTIFIED CORNER RECORDATION

Corner NE Cor. S34 T. 30 N. R. 30 W. P.M.M. LINCOLN County

I. Record: 1902 original GLO survey by G. Fessenden and R. Lyman, set a larch post 3 ft. long, 4 ins. square 24 ins. in the ground, mkd. T30N S26 on NE, R30W S35 on SE, S34 on SW, and S27 on NW. face, with 1 notch on S. and 2 notches on E. edge from which:

A tamarack, 10 ins. diam., bears N.59°E. 95 lks. dist. (62.70 ft.), mkd. T30N R30W S26 BT.  
A tamarack, 18 ins. diam., bears S.80°30'E. 100 lks. dist. (66.00 ft.), mkd. T30N R30W S35 BT.  
A fir, 14 ins. diam., bears S.25°30'W. 115 lks. dist. (75.90 ft.), mkd. T30N R30W S34 BT.  
A tamarack, 18 ins. diam., bears N.63°45'W. 90 lks. dist. (59.40 ft.), mkd. T30N R30W S27 BT.

1965 BLM Remoumentation by D. Lindenberg: Set an iron post, 30 ins. long, 2 1/2 ins. diam., 26 ins. in the ground, with brass cap mkd. as shown below from which:

A larch, 9 ins. diam., bears N.5°E., 47 lks. dist., (31.02 ft.) mkd. T30N R30W S26 BT.  
A larch, 10 ins. diam., bears S.57°E., 11 lks. dist., (7.26 ft.) mkd. T30N R30W S35 BT.  
A larch, 6 ins. diam., bears S.71°30'W., 26 lks. dist., (17.16 ft.) mkd. T30N R30W S34 BT.  
A larch, 20 ins. diam., bears N.33°45'W., 29 lks. dist., (19.14 ft.) mkd. T30N R30W S27 BT.

II. Found A 3 1/4 ins. diam. BLM brass cap on a 2 1/2 in. diam. iron pipe found firmly set, from which:

A larch snag, 10 ins. diam., bears N.5°E., 31.02 ft. dist., with visible scribing.  
A larch, 12 ins. diam., bears S.57°E., 7.26 ft. dist., with overgrown face.  
A larch snag, 7 ins. diam., bears S.71°W., 17.16 ft. dist., with visible scribing.  
A carsonite post with Property line and Survey monument stickers bears North 3 ft.

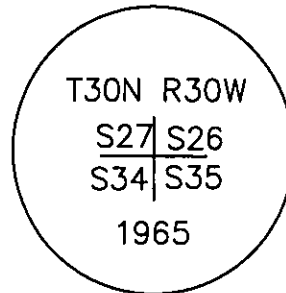
III. Perpetuation: Establish three bearing trees described below :

A fir, 9 ins. diam., bears N.84°W., 14.90 ft. dist., mkd. T30N R30W S27 BT.  
A fir, 8 ins. diam., bears S.13°W., 11.10 ft. dist., mkd. T30N R30W S34 BT.  
A fir, 10 ins. diam., bears N.89°E., 23.30 ft. dist., mkd. T30N R30W S26 BT.

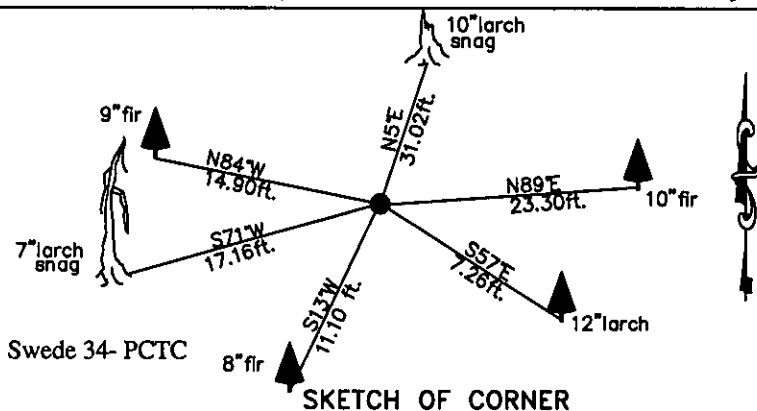
Painted faces and 6 in. wide red bands to all bearing trees and attached Bearing tree and Land Survey Monument signs.

Magnetic declination: 18° East

Equipment used: Hand compass and loggers tape



Kootenai Surveyors Inc., 314 California Av., Libby, MT. 59923 (406) 293-4354



CERTIFICATION

I, Mike Tester  
certify the information shown herein is true and correct.

Alvah F. Hughes  
Signature Ground Party Chief

I, Alvah F. Hughes  
certify that this Corner Record correctly represents the corner performed by me or under my direction in compliance with the "Corner Recordation Act" (70-22-101, et seq., M.C.A.)

Alvah F. Hughes  
Signature of Surveyor & Seal

Date: 7/4/2008 Reg. No. 7322-LS  
Employer: Kootenai Surveyors Inc.

Office of Clerk and Recorder, County of Lincoln This "corner

record" was filed 213040 BOOK: CCR CC&R'S PAGE: 11248 Pages: 1

was noted on STATE OF MONTANA LINCOLN COUNTY

RECORDED: 07/23/2008 9:47 KOI: CC&R'S

book No. TAMMY D. LAUER CLERK AND RECORDER

FEE: \$0.00

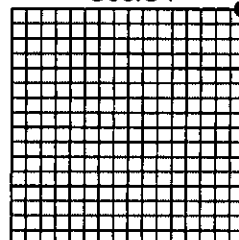
BY: Alvah F. Hughes

TO: KOOTENAI SURVEYORS INC. P.O. BOX 393, LIBBY, MT 59923

Cross Index No. V 17 T. 30N R. 30W P.M., MT

Adopted July 1, 1981, Montana Board of Professional Engineers & Land Surveyors

Sec.34



• corner this sheet