

CERTIFIED CORNER RECORDATION

Corner SE Cor. S34 T 30 N. R. 30 W. P.M.M. LINCOLN County

I. Record: 1902 original GLO survey by G. Fessenden and R. Lyman, set a slate stone 15x10x4 ins., 10 ins. in the ground, marked with 2 notches on the E. and 4 notches W. edge from which:

A tamarack, 10 ins. diam., bears N.6°W. 67 lks. dist. (44.22 ft.), mkd. T30N R30W S34 BT.
A tamarack, 18 ins. diam., bears N.24°E. 163 lks. dist. (107.58 ft.), mkd. T30N R30 S35 BT.

1964 BLM Remoumentation by G. Pittman : Set an iron post, 30 ins. long, 2 1/2 ins. diam., 27 ins. in the ground, with brass cap mkd. as shown below from which:

A larch, 20 ins. diam., bears N.24°E., 163 lks. dist., (107.58 ft.) with overgrown blaze.
A larch, 15 ins. diam., bears N.6°W., 67 lks. dist., (44.22 ft.) with overgrown blaze.
A larch, 7 ins. diam., bears N.80°E., 27 lks. dist., (17.82 ft.) mkd. T30N R30W S35 BT.

II. Found: A 2 1/2 ins. diam. iron pipe with a 3 1/4 ins. diam. BLM brass cap 6 ins. above ground and firmly set, from which:

A larch, 19 ins. diam., bears N.6°W., 44.22 ft. dist., with overgrown face.
A larch stump, 22 ins. diam., bears N.24°E., 107.58 ft. dist., with no visible scribes.
A larch snag, 12 ins. diam., bears N.80°E., 17.82 ft. dist., with visible scribes.
A carsonite post with attached Property line and Land Survey Monument stickers bears East 3 ft.

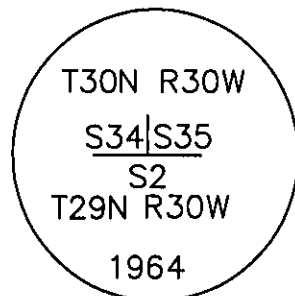
III. Perpetuation: Establish one new bearing tree described below:

A fir, 17 ins. diam., bears N.31°E., 48.30 ft. dist., mkd. T30N R30W S35 BT.

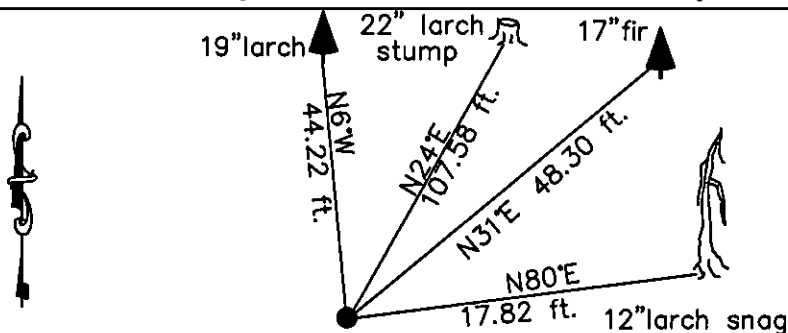
Painted faces and 6 in. wide red bands to all bearing trees and attached Bearing tree and Land Survey Monument signs.

Magnetic declination: 18° East

Equipment used: Hand compass and loggers tape



Kootenai Surveyors Inc., 314 California Av., Libby, MT. 59923 (406) 293-4354



Swede 34- PCTC

SKETCH OF CORNER

CERTIFICATION

I, Mike Tester
certify the information shown herein is true and correct.

Signature Ground Party Chief:

I, Alvah F. Hughes
certify that this Corner Record correctly represents work performed by me or under my direction in compliance with the "Corner Recordation Act" (70-22-101, et seq.)
Signature of Surveyor & Seal

Date: 7/4/2008 Reg. No. 7322-LS

Employer: Kootenai Surveyors Inc.

Office of Clerk and Recorder, County of Lincoln This "corner

record" was filed 213039 BOOK: CCR CC&R'S PAGE: 11247 Pages: 1

was noted on STATE OF MONTANA LINCOLN COUNTY

RECORDED: 07/23/2008 9:46 KOI: CC&R'S

book No. TAMMY D. LAUER CLERK AND RECORDER

FEE: \$0.00

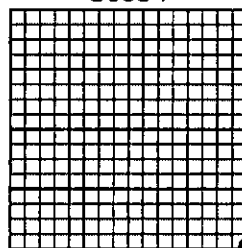
BY: Francis D. Lauer

TO: KOOTENAI SURVEYORS INC. P.O. BOX 393, LIBBY, MT 59923

Cross Index No. Z 17 T. 30N R. 30W P.M., MT

Adopted July 1, 1981, Montana Board of Professional Engineers & Land Surveyors

Sec34



• corner this sheet