

CERTIFIED CORNER RECORDATION

Corner SW 1/16 S30 T. 30 N. R. 30 W. P.M.M. LINCOLN County

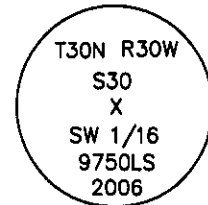
- I. Record: 1893 G.L.O. Original Survey of the Libby Creek Guide Meridian by Daniel P. Mumbrue
1904 G.L.O. Fractional Subdivision by George W. Fessenden and Ranny G. Lyman
2000 Plat of Swede Mountain Lookout Estates No. 6325, by Alvah F. Hughes, MT Reg. No.
7322LS: Set 5/8 inch diameter rebar with a plastic cap stamped HUGES 7322-LS
- II. Found a 5/8 in. diam. rebar with a red plastic cap marked HUGHES 7322LS
- III. Accepted the position of the found rebar and replaced the red plastic cap with a 3 1/4 in. diam. aluminum cap marked as shown, from which:

The new bearing trees

A fir, 5 ins. diam., bears N65°E, 31.8 ft. dist., marked "X" BT.

A fir, 6 ins. diam., bears S23°W, 9.8 ft. dist., marked SW 1/16 S30 BT.

Attached Bearing Tree and Land Survey Monument signs to the bearing trees. Painted red the scribed face and a red band around the bearing trees. Set a 6 ft. galvanized steel guard post 3 ft. South and West of the corner, with Land Survey Monument and Property Boundary decals attached.



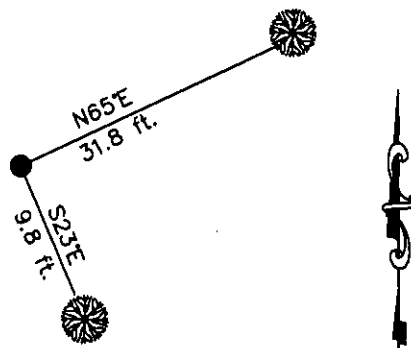
Date of Fieldwork: 5/24/2006

Survey crew: Tom Hommel, Steve Boyer

Magnetic declination: 20° East assumed

Equipment used: Hand compass and loggers tape

U.S. Forest Service, Supervisors Office, 1101 Hwy. 2 West, Libby, MT 59923 (406) 293-6211



SKETCH OF CORNER

NOT TO SCALE

CERTIFICATION

I, Thomas M. Hommel 10800LS
certify the information shown herein is true and correct.

[Signature]
Signature Ground Party Chief

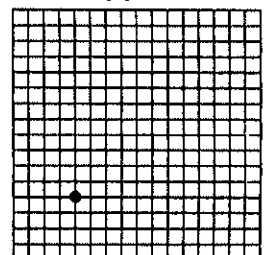
I, Steven A. Boyer
certify that this Corner Record correctly represents work performed by me or under my direction in compliance with the "Corner Recordation Act" 70-22-101, et seq., M.C.A.

[Signature]
Signature of Surveyor & Seal

Date: 11/16/2006 Reg. No. 9750LS

Employer: U. S. Forest Service

Sec. 30



• corner this sheet

Office of Clerk and Recorder, County of Lincoln

199650 BOOK: CCR CC&R'S PAGE: 10984 Pages: 1
STATE OF MONTANA LINCOLN COUNTY
RECORDED: 12/13/2006 1:04 KOI: CC&R'S
CORAL M. CUMMINGS CLERK AND RECORDER
FEE: \$0.00 BY: [Signature]
TO: US FOREST SERVICE

Cross Index No. U-2 T. 30N. R. 30W. P.M., MT

Adopted July 1, 1981, Montana Board of Professional Engineers & Land Surveyors