

### CERTIFIED CORNER RECORDATION

Corner S25 | S30  
S36 | S31 T. 30 N. R. 30 W. P.M.M. LINCOLN County  
and the bearing trees mkd. in 1962

- A fir, 9 ins. diam., bears S64°E, 48 lks. dist., with healed blaze.
- A fir, 6 ins. diam., bears S36 1/2°W, 52 lks. dist., mkd. T30N R31W S36 BT on partially healed blaze.
- A larch, 12 ins. diam., bears N56°W, 35 lks. dist., with illegible scribe marks on partially healed blaze.

1986 Certified Corner Recordation by Harold W. Grusing, Mt. Reg. No. 2925S: Finds the remains of the 1893 bearing trees and the 1962 BLM bearing trees. Sets a steel post with a Land Survey Monument decal 1 ft. S. of corner. Marks 1 new B.T.

A fir, 9 ins. diam., bears N71°E, 39' dist., mkd. T30N R30W S30 BT. Painted the blazes and a 6" red band on the bearing trees. Attached "Land Survey Monument" signs on back side of bearing trees.

2000 Plat of Swede Mountain Lookout Estates No. 6325, by Alvah F. Hughes, MT Reg. No. 7322LS: Found a 3 1/4 inch diameter BLM brass cap.

II. Found a 2 1/2 in. diam. iron pipe with a 3 1/4 in. diam. BLM brass cap marked as shown

- A decayed stump, 20 ins. diam., bears N2 1/2°E, 56.1 ft. dist., with charred blaze.
- A decayed stump, 20 ins. diam., bears S68 3/4°E, 22.4 lks. dist., mkd. with visible hack marks.
- A fir, 9 ins. diam., bears S64°E, 31.7 ft. dist., with healed blaze.
- A decayed stump, size indeterminate, bears S34 1/4°W, 25.1 ft. dist., no visible marks.
- A fir, 6 ins. diam., bears S36 1/2°W, 34.3 ft. dist., mkd. T30N R31W S36 BT.
- A decayed stump, 24 ins. diam., bears N86°W, 37.6 ft. dist., no visible marks.
- A larch, 12 ins. diam., bears N56°W, 23.1. dist., with illegible scribe marks on partially healed blaze.

III. Establish one new bearing tree

A fir, 5 ins. diam., bears N30°E, 33.5 ft. dist., marked "X" BT.

Attached Bearing Tree and Land Survey Monument signs to the bearing trees. Painted red the scribed face and a red band around the bearing trees. Set a 6 ft. galvanized steel guard post 3 ft. South and West of the corner, with Land Survey Monument and Property Boundary decals attached.

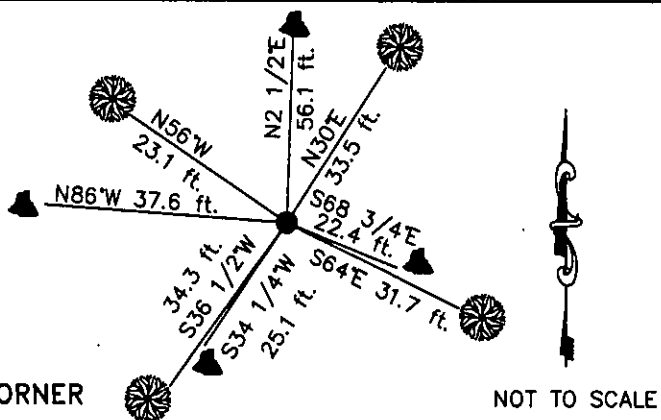
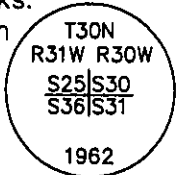
Date of Fieldwork: 5/24/2006

Survey crew: Tom Hommel, Steve Boyer

Magnetic declination: 20' East assumed

Equipment used: Hand compass and loggers tape

U.S. Forest Service, Supervisors Office, 1101 Hwy. 2 West, Libby, MT 59923 (406) 293-6211



CERTIFICATION

I, Thomas M. Hommel 10800LS  
certify the information shown herein is true and correct.

*[Signature]*  
Signature Ground Party Chief

I, Steven A. Boyer  
certify that this Corner Record correctly represents work performed by me or under my direction in compliance with the "Corner Recordation Act" (22-22-01, et seq., M.C.A.)

*[Signature]*  
Signature of Surveyor & Seal

Date: 11/28/2006 Reg. No. 9750LS

Employer: U. S. Forest Service

Office of Clerk and Recorder, County of Lincoln

199649 BOOK: CCR CC&R'S PAGE: 10983 Pages: 1

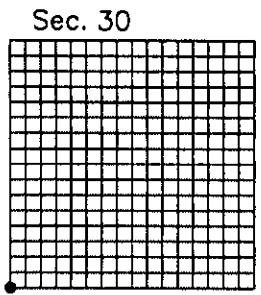
STATE OF MONTANA LINCOLN COUNTY

RECORDED: 12/13/2006 1:03 KOI: CC&R'S

CORAL M. CUMMINGS CLERK AND RECORDER

FEE: \$0.00 BY: *[Signature]*

TO: US FOREST SERVICE



Cross Index No. V-2 T. 30N. R. 30W. P.M., MT