

CERTIFIED CORNER RECORDATION

Corner: N 1/16 S 36

Twp. 30 N., R. 30 W., P.M.M.

Lincoln County

Record :

NONE

Found Evidence :

NONE

Perpetuation :

Established two new bearing trees and set a 5/8 inch diameter rebar 24 inches long 20 inches in the ground with a 1 1/4 inch diameter YPC stamped: 4975-S.

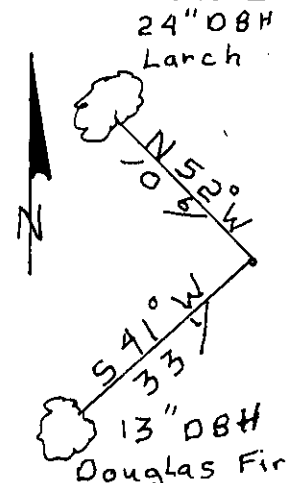
From which:

A 13 inch : DBH Douglas fir scribed N 1/16 S 36 BT Bears S 41° W 33.1 feet distance.

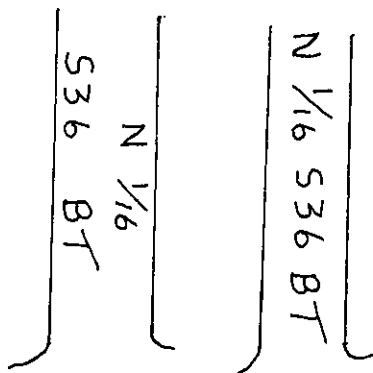
A 24 inch : DBH Larch scribed N 1/16 S 36 BT Bears N 52° W 10.6 feet distance.

Painted 6 inch Wide Bands and attached warning and bearing tree signs to both trees.

Declination 18 °E



Sketch of Corner



CERTIFICATION

I, Randy Borgman
certify that the information shown herein is true and correct

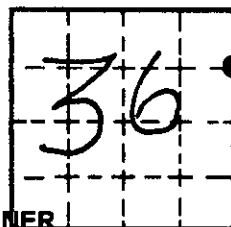
Signature of Ground Party Chief
Signature of Surveyor Seal
Date: 12/12/00 Reg. No. 4975-S
Employer: Davis Surveying, Inc.

Office of Clerk and Recorder, County of Lincoln

This "corner record" was filed for record on 12/12/00
was noted on the cross-index plat and is assigned page No. 10460
in book No. Coral M. Cumming By DES

County Official

Section



Cross Index No. N 1/16 S 36 Twp. 30 N., R. 30 W., P.M.M.

● THIS CORNER