

CERTIFIED CORNER RECORDATION

Corner C 1/4 S21 T. 30 N., R. 30 W., P.M.M. Lincoln County

Record :

None.

Found Evidence :

None.

Perpetuation :

From a section breakdown by Davis Surveying, Inc., on record at the Lincoln County Courthouse, Libby, Montana, at the computed position set a 5/8 inch diam. by 24 inch long steel rebar, 22 inches in the ground, with a 3 1/4 inch diam. alum. cap marked C 1/4 T30N R30W S21 KED 4975-S 1999, from which:

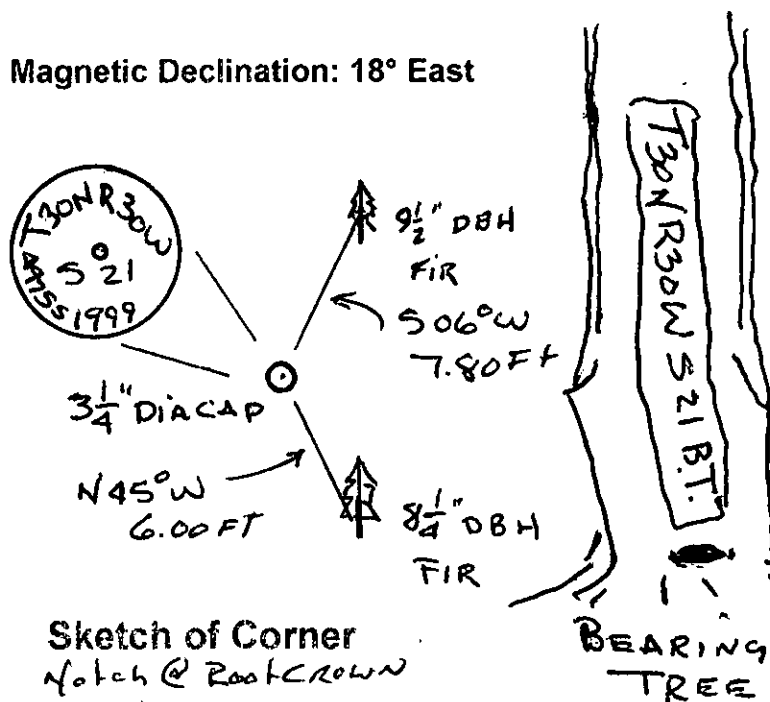
A Grand Fir, 9 1/2 ins. diam., bears S 06° W, 7.80 feet dist., scribed (C 1/4 T30N R30W S21 BT).

A Grand Fir, 8 1/4 ins. diam., bears N 45° W, 6.00 feet dist., scribed (C 1/4 T30N R30W S21 BT).

Painted 6 inch wide bands and scribed faces red.

Attached Bearing Tree signs to both trees.

Magnetic Declination: 18° East



Sketch of Corner
Notch @ Root Crown

CERTIFICATION

I, _____
certify the information shown herein is true and correct
Edgar E. Shuman + George R. Clark
Signature of Ground Party Chief
I, Kenneth E. Davis
certify that this Corner Record correctly represents work performed by
me or under my direction in compliance with the "Corner Recordation
Act",
(70-2-101, et seq., M.C.A.)
Signature of Surveyor & Seal
Date 9/2/99 Reg. No. 4975-S
Employer: Davis Surveying, Inc.

Office of Clerk and Recorder, County of Lincoln

This "corner record" was filed for record on Oct 6, 1999 10353
was noted on the cross-index plat and is assigned page No.

in book No. Carol M. Cummings By DEB
County Official

Cross Index No. C 1/4 S21 T. 30 N., R. 30 W., P.M.M.

THIS CORNER