

# CERTIFIED CORNER RECORDATION

Corner MC Sec. 17 / 18 T. 30N R. 29W P.M., MT Lincoln County

I. 1898 G.L.O. original record by Paul S. A. Rickel: Set a slate stone, 20 x 8 x 6 ins., 15 ins. in the ground, for Meander Cor. of fractional Secs. 17 and 18, mkd. "M.C." on N. face, with 5 grooves on E. face; from which:

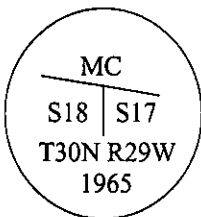
A pine, 22 ins. diam., bears S40° 55'E, 61 lks. dist., mkd. "T30N R29W S17 MC BT".

A pine, 24 ins. diam., bears N39° 30'W, 9 lks. dist., mkd. "T30N R29W S18 MC BT".

1965 B.L.M. Remonumentation record by Duane G. Lindenberg: The meander cor. of secs. 17 and 18, on the left bank of the Kootenai River, determined from the remains of the original bearing trees.

At the corner point:

Set an iron post, 30 ins. long, 2 1/2 ins. diam., 26 ins. in the ground, with brass cap, mkd.:



from which:

The original bearing trees:

A pine, 31 ins. diam., bears S40° 55'E, 61 lks dist., with visible scribe marks.

A rotted stump, bears N39 1/2°W, 9 lks. dist., with illegible markings.

II. Found an iron pipe, 2 1/2 ins. diam., firmly set in a collar of stone, with a 3 1/4 ins. diam. B.L.M. brass cap, 2 ins. above the ground, marked as shown above:

from which:

A burnt pine stump, 19 ins. diam., bears S41°W, 41.2 ft. (62 lks.) dist., with "N R29W" visible. (G.L.O. rec: 61 lks.)

A depression bears, N39°W, 5.9 ft. (9 lks.) dist. (No remains found.)

III. Established 2 new bearing trees:

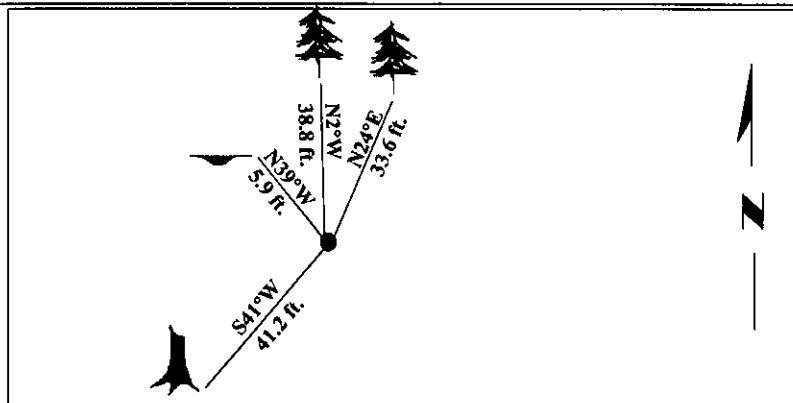
A pine, 9 ins. diam., bears N24°E, 33.6 ft. dist., mkd. "MC S17 BT".

A pine, 9 ins. diam., bears N2°W, 38.8 ft. dist., mkd. "MC S18 BT".

Painted bearing trees and attached Land Survey Monument and Bearing Tree signs.

Set a steel guard post South, 4.0 ft. dist., with a Land Survey Monument decal.

Magnetic declination: 20°E.



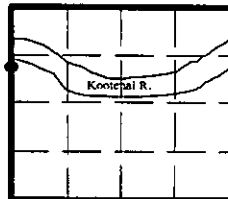
SKETCH OF CORNER

CERTIFICATION	
I, <u>Thomas M. Hommel</u>	
certify the information shown herein is true and correct.	
<i>Thomas M. Hommel</i>	
Signature Ground Party Chief	
I, <u>Alvah F. Hughes</u>	
certify that this Corner Record correctly represents work performed by me or under my direction in compliance with the "Corner Recordation Act" (70-22-101, et seq., M.C.A.)	
<i>Alvah F. Hughes</i>	
Signature of Surveyor & Seal	
Date:	<u>12/2/96</u>
Reg. No.:	<u>7322LS</u>
Employer:	<u>U.S. FOREST SERVICE</u>

Office of Clerk and Recorder, County of LINCOLN. This "corner record" was filed for record on FEB 3, 1997 was noted on the cross-index plat and is assigned page No. 9121 in book No. CORAL M. CUMMINGS

County Official *[Signature]*

Sec. 17



● - corner this sheet

Cross Index No. MC S17/18 T. 30N R. 29W P.M., MT