

CERTIFIED CORNER RECORDATION

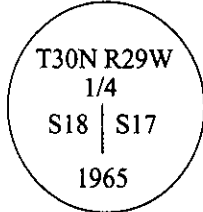
Corner **W 1/4** **Sec. 17** **T. 30N** **R. 29W** **P.M., MT** **Lincoln** **County**

I. 1898 G.L.O. original record by Paul S. A. Rickel: Set a stone and marked two bearing trees.

1965 Remonumentation B.L.M. record by Duane G. Lindenberg: The 1/4 sec. cor. of secs. 17 and 18, monumented with a slate stone, 20 x 6 x 6 ins., firmly set, marked "4" on the W. side and witnessed by the remains of the original bearing trees.

At the corner point:

Set an iron post, 30 ins. long, 2 1/2 ins. diam., 26 ins. in the ground, with brass cap, mkd.:



from which:

The original bearing trees:

A fir, 13 ins. diam., bears S34° 50'E, 13 lks dist., mkd. "1/4 S17 BT".

A larch, 10 ins. diam., bears S71 1/2°W, 18 lks. dist., mkd. "1/4 S18 BT". (Record: S65°W, 18 lks.)

The new bearing tree:

A fir, 12 ins. diam., bears N23°W, 44 lks. dist., mkd. "1/4 S18 BT".

Bury the original corner stone alongside the iron post.

II. Found an iron pipe in the 1979 Jennings fire area, 2 1/2 ins. diam., firmly set, with a 3 1/4 ins. diam. B.L.M. brass cap, 4 ins. above the ground, marked as shown above:

from which:

A dead fir, 13 ins. diam., bears S35°E, 8.2 ft. (12 lks.) dist., with a burnt face. (G.L.O. rec: 13 lks.)

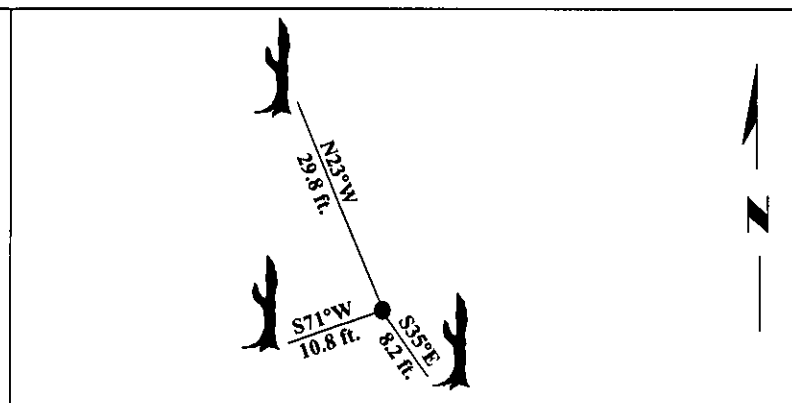
A dead larch, 8 ins. diam., bears S71°W, 10.8 ft. (16 lks.) dist., with a burnt face. (G.L.O. rec: S65°W, 16 lks.)

A dead fir, 13 ins. diam., bears N23°W, 29.8 ft. (45 lks.) dist., with marks "1/4 S18 B" visible. (B.L.M. rec: 44 lks.)

III. No live trees available for new bearing trees due to 1979 Jennings Fire.

Painted bearing trees and attached Land Survey Monument and Bearing Tree signs.

Magnetic Declination: 20° East.



SKETCH OF CORNER

| |
|---|
| CERTIFICATION |
| I, Thomas M. Hommel certify the information shown herein is true and correct. Signature Ground Party Chief |
| I, Alvah F. Hughes certify that this Corner Record correctly represents work performed by me or under my direction in compliance with the "Corner Recordation Act", 170,321-107, M.C.A. Signature of Surveyor & Seal |
| Date: <u>12/2/96</u> |
| Reg. No.: <u>7322LS</u> |
| Employer: <u>U.S. FOREST SERVICE</u> |

Office of Clerk and Recorder, County of LINCOLN. This "corner record" was filed for record on FEB 3, 1997 and was noted on the cross-index plat and is assigned page No. 9120, in book No. _____.

CORAL M. CUMMINGS

 County Official *[Signature]*

Sec. 17

| | | | |
|--|--|--|--|
| | | | |
| | | | |
| | | | |
| | | | |

● - corner this sheet