

## INSTRUCTIONS

1. Original and/or subsequent record used to evaluate the corner position.
2. Description of evidence found, note discrepancies in the record, state method of establishing lost or obliterated corners.
3. Description of monument and accessories set to perpetuate the corner position.
4. Sketch of corner, show all pertinent data which can best be shown in a sketch example, corner marking, topography ties, position of accessories, etc.
5. Certification must be signed and sealed by Land Surveyor registered in the State of Montana.
6. Fill in Cross Index & Section Diagram at bottom of sheet.

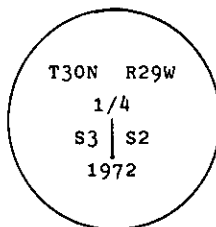
## CERTIFIED CORNER RECORDATION

Corner 1/4 Cor. of Secs. 2 & 3 T. 30 N. R. 29 W. P.M.M. Lincoln County

- I. 1903 original G.L.O. record by George A. Fessenden and Ranney Y. Lyman: "Set a slate stone, 13 X 12 X 8 ins., 12 ins. in the ground, for 1/4 sec. cor., marked 1/4 on W. face, from which:

A pine, 4 ins. dia., bears  $N75^{\circ}30'W$ , 30 lks. dist., marked 1/4 S3 BT.  
A pine, 5 ins. dia., bears  $S31^{\circ}30'E$ , 18 lks. dist., marked 1/4 S2 BT.

1972 B.L.M. remonumentation by Joseph E. French: "At the corner point set an iron post, 30 ins. long, 2 1/2 ins. diam., 24 ins. in the ground, with brass cap mkd. as shown.



from which:

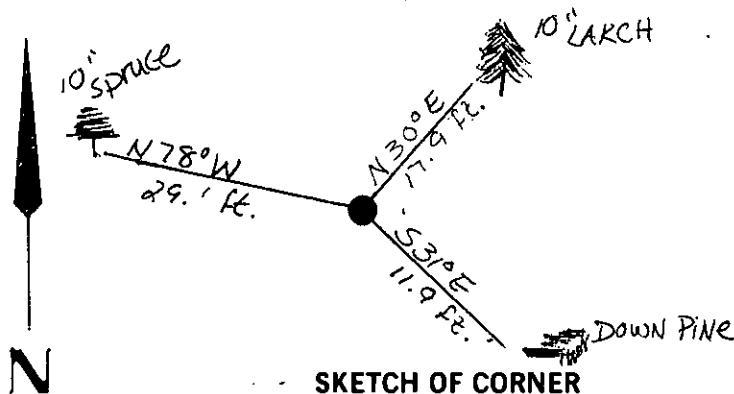
A larch, 7 ins. diam., bears  $N30^{\circ}1/2'E$ , 27 lks. dist., mkd. 1/4 S2 B.T.  
A spruce, 6 ins. diam., bears  $N78^{\circ}W$ , 44 lks. dist., mkd. 1/4 S3 B.T."

- II. Found a 2 1/2 ins. diam. B.L.M. brass cap 3 ins. above the ground, mkd. as shown, from which:

A down pine, bears  $S31^{\circ}E$ , 11.9 ft. dist. visible scribing.  
A larch, 10 ins. diam., bears  $N30^{\circ}E$ , 17.9 ft. dist. healed face.  
A spruce, 10 ins. diam., bears  $N78^{\circ}W$ , 29.1 ft. dist., mkd. 1/4 S3 B.T.

- III. Painted a red band around each bearing tree and attached Land Survey Monument and Bearing Tree signs.  
Set a 6 ft. galvanized steel post with Property Boundry and Land Survey Monument decals attached. NORTH, 16.0 ft.

Magnetic Declination:  $20^{\circ}$  East.



SKETCH OF CORNER

## CERTIFICATION

I, Kenneth Kern  
certify the information shown herein is true and correct.

Kenneth R Kern  
Signature Ground Party Chief

I, Alvah F. Hughes  
certify that this Corner Record correctly represents work performed by me or under my direction in compliance with the "Corner Recordation Act" (70-22-101, et seq., M.C.A.)

Alvah F Hughes  
Signature of Surveyor & Seal

Date: 12/15/93 Reg. No. 73221-S

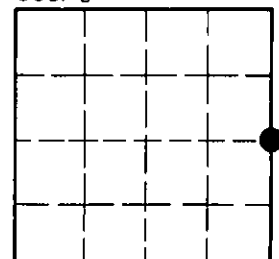
Employer: U.S. FOREST SERVICE

Office of Clerk and Recorder, County of Lincoln. This "corner record" was filed for record on March 5, 1994 was noted on the cross-index plat and is assigned page No. 6212 in book No. Coral M. Cummings & Co.

County Official

C-17 Cross Index No. T. 30N R. 29W PMM

Sec. 3



• - corner this sheet