

INSTRUCTIONS

1. Original and/or subsequent record used to evaluate the corner position.
2. Description of evidence found, note discrepancies in the record, state method of establishing lost or obliterated corners.
3. Description of monument and accessories set to perpetuate the corner position.
4. Sketch of corner, show all pertinent data which can best be shown in a sketch example, corner marking, topography files, position of accessories, etc.
5. Certification must be signed and sealed by Land Surveyor registered in the State of Montana.
6. Fill in Cross Index & Section Diagram at bottom of sheet.

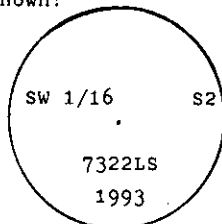
CERTIFIED CORNER RECORDATION

Corner SW 1/16 Sec. 2 T. 30 N. R. 29 W. P.M.M. Sanders County

I. No previous record found at Lincoln County Courthouse.

II. No evidence found.

III. At the position determined by survey, set a $3/2$ ins. diam. X 30 ins. long alum. rod, 24 ins. in the ground, with a $3\frac{1}{4}$ in. diam. alum. cap mkd. as shown:



from which the new bearing trees:

A fir, 11 ins. diam., bears N 65° W, 52.9 ft. dist., mkd. SW 1/16 S2 BT.

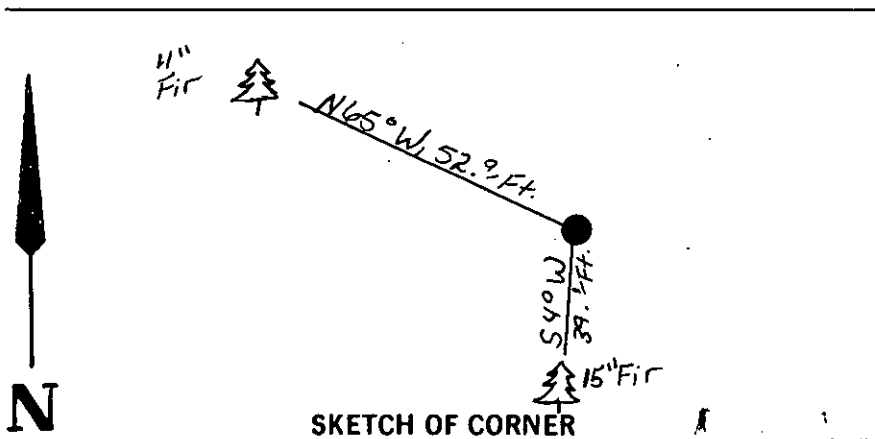
A fir, 15 ins diam., bears S 4° W, 39.1 ft. dist., mkd. SW 1/16 S2 BT.

Painted a red band around each bearing tree and attached Land Survey Monument and Bearing Tree signs.

Set a 6 ft. galvanized steel guard post with Survey Marker and Property Boundry decals attached, 3 ft. North.

Magnetic Declination: East, 20°

(Reference Certificate of Survey on file at Lincoln County Courthouse.)



SKETCH OF CORNER

CERTIFICATION

Kenneth R. Kern

I, Kenneth R. Kern certify the information shown herein is true and correct.

Kenneth R. Kern
Signature Ground Party Chief

Alvah F. Hughes

I, Alvah F. Hughes certify that this Corner Record correctly represents work performed by me or under my direction in compliance with the "Corner Recordation Act" (70-22-101, et seq., M.C.A.).

Alvah F. Hughes
Signature of Surveyor & Seal

Date 2/16/93

Reg. No. 7322LS

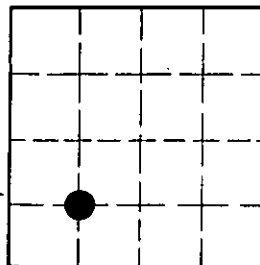
Employer: U.S. FOREST SERVICE

Office of Clerk and Recorder, County of Lincoln. This "corner record" was filed for record on March 5, 1994 was noted on the cross-index plat and is assigned page No. 6211 in book No. Coral M. Cummings & Co.

County Official

Cross Index No. D-18 T. 30 R. 29 P.M.M.

Sec. 2



• - corner this sheet