

## INSTRUCTIONS

1. Original and/or subsequent record used to evaluate the corner position.
2. Description of evidence found, note discrepancies in the record, state method of establishing lost or obliterated corners.
3. Description of monument and accessories set to perpetuate the corner position.
4. Sketch of corner, show all pertinent data which can best be shown in a sketch example, corner marking, topography ties, position of accessories, etc.
5. Certification must be signed and sealed by Land Surveyor registered in the State of Montana.
6. Fill in Cross Index & Section Diagram at bottom of sheet.

## CERTIFIED CORNER RECORDATION

Corner Sec. Cor. of sec. 2, 3, 10, and 11 T. 30 N. R. 29 W. P.M.M. Lincoln County

- I. 1903 original G.L.O. record by George A. Fessenden and Ranney Y. Lyman: "Set a slate stone, 12 X 8 X 6 ins., 8 ins. in the ground, for cor. of secs. 2, 3, 10, and 11, marked with 5 notches on S. and 2 notches on E. edge, from which:

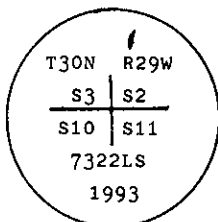
A fir, 12 ins. diam., bears N38° E, 30 lks. dist., mkd. T30N R29W S2 B.T.  
A tamarack, 12 ins. diam., bears S51 30' E, 24 lks. dist., mkd. T30N R29W S11 B.T.  
A fir, 7 ins. diam., bears S67° W, 48 lks. dist., mkd. T30N R29W S10 B.T.  
A fir, 10 ins. diam., bears N65° 30' W, 65 lks. dist., mkd. T30N R29W S3 B.T."

- II. Found a stone 12x8x6 ins., lying on top of the ground.

from which:

A fir, 17 ins. diam., bears N38° E, 19.8 ft. dist., (30 lks.) healed face.  
A larch, 18 ins. diam., bears S51 30' E, 15.8 ft. dist., (24 lks.) visible marks.  
A fir, 21 ins. diam., bears N65° 30' W, 42.9 ft. dist., (65 lks.) healed face.

- III. At the corner point, as determined from intersection of distances from original bearing trees.  
Set a 2 1/2 ins. diam., aluminum pipe, 30 ins. long, 15 ins. in the ground with a 3 1/4 ins. diam., aluminum cap, marked as shown:



Raised a 3 ft. mound of stone around the cap.

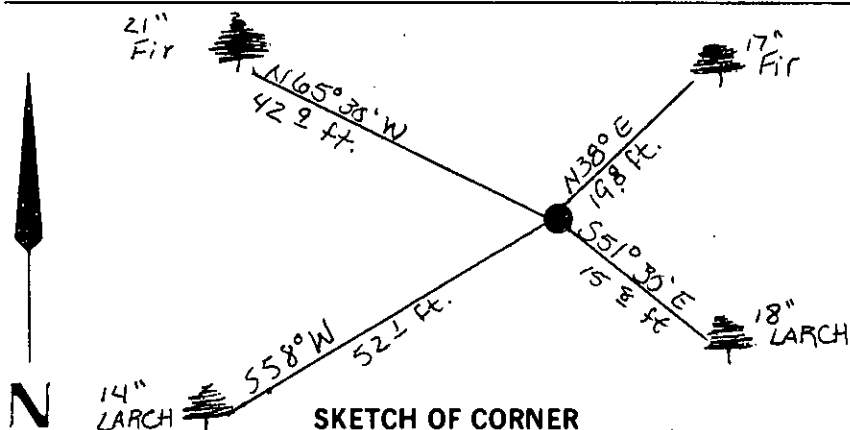
Established one new bearing tree:

A larch, 14 ins. diam., bears S58° W, 52.1 ft. dist., mkd. T30N R29W S10 B.T.

Raised a 3 ft. mound of stone around the new monument.

Set a 6 ft. galvanized steel guard post with Land Survey Monument and Property Boundry decals attached, East 3.0 ft.

Painted a red band around each bearing tree and attached "Land Survey Monument" and "Bearing Tree" signs.  
Magnetic Declination: 20° East.



CERTIFICATION	
Kenneth Kern	
certify the information shown herein is true and correct.	
<i>Kenneth R Kern</i>	
Signature Ground Party Chief	
Alvah F. Hughes	
I, <i>Alvah F. Hughes</i>	
certify that this Corner Record correctly represents work performed by me or under my direction in compliance with the "Corner Recordation Act" (70-22-101, et seq., M.S.A.)	
<i>Alvah F. Hughes</i>	
Signature of Surveyor & Seal	
Date: 12/16/93	Reg. No. 7322LS
Employer: U.S. FOREST SERVICE	

Office of Clerk and Recorder, County of Lincoln. This "corner record" was filed for record on March 5, 1994

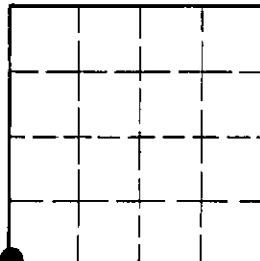
was noted on the cross-index plat and is assigned page No. 6210, in

book No. Coral M. Cummings By RB

County Official

E-17 30 N 29W  
Cross Index No. T. R. PMM

Sec. 2



• - corner this sheet