

## INSTRUCTIONS

1. Original and/or subsequent record used to evaluate the corner position.
2. Description of evidence found, note discrepancies in the record, state method of establishing lost or obliterated corners.
3. Description of monument and accessories set to perpetuate the corner position.
4. Sketch of corner, show all pertinent data which can best be shown in a sketch example, corner marking, topography ties, position of accessories, etc.
5. Certification must be signed and sealed by Land Surveyor registered in the State of Montana.
6. Fill in Cross Index & Section Diagram at bottom of sheet.

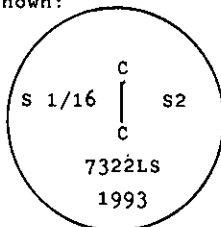
## CERTIFIED CORNER RECORDATION

Corner CS 1/16 Sec. 2 T. 30 N. R. 29 W. P.M.M. Lincoln County

I. No previous record found at Lincoln County Courthouse.

II. No evidence found.

III. At the position determined by survey, set a 3/4 ins. diam., x 30 ins. long alum. rod, 24 ins. in the ground, with a 3 1/4 in. diam. alum. cap mkd. as shown:



from which the new bearing trees:

A larch, 13 ins. dia., bears N27° E, 28.6 ft. dist., mkd. CS 1/16 S2 BT.

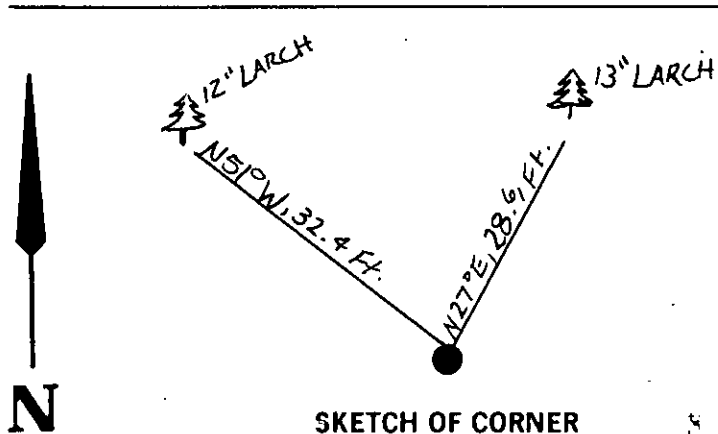
A larch, 12 ins dia., bears N51° W, 32.4 ft. dist., mkd. CS 1/16 S2 BT.

Painted a red band around each bearing tree and attached Land Survey Monument and Bearing Tree signs.

Set a 6 ft. galvanized steel guard post with Survey Marker and Property Boundy decals attached, 3 ft. West.

Magnetic Declination: East, 20°

(Reference Certificate of Survey on file at Lincoln Courthouse.)



SKETCH OF CORNER

## CERTIFICATION

Kenneth R. Kern

I, Kenneth R. Kern  
certify the information shown herein is true and correct.

Signature Ground Party Chief  
Alvah F. Hughes

I, Alvah F. Hughes  
certify that this Corner Record correctly represents work performed by me or under my direction in compliance with the "Corner Recordation Act" (70-22-101, et seq., M.C.A.)

Signature of Surveyor & Seal  
Alvah F. Hughes

Date: 12/16/93 Reg. No. 7322LS

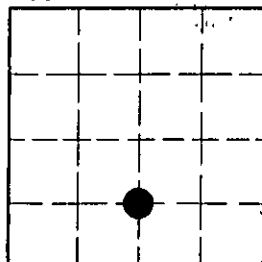
Employer: U.S. FOREST SERVICE

Office of Clerk and Recorder, County of Lincoln. This "corner record" was filed for record on March 5, 1994 was noted on the cross-index plat and is assigned page No. 6209 in book No. Coral M. Cummings & Co.

County Official

Cross Index No. C-18 T. 30N R. 29W P.M.M.

Sec. 2



• corner this sheet