

INSTRUCTIONS

1. Original and/or subsequent record used to evaluate the corner position.
2. Description of evidence found, note discrepancies in the record, state method of establishing lost or obliterated corners.
3. Description of monument and accessories set to perpetuate the corner position.
4. Sketch of corner, show all pertinent data which can best be shown in a sketch example, corner marking, topography ties, position of accessories, etc.
5. Certification must be signed and sealed by Land Surveyor registered in the State of Montana.
6. Fill in Cross Index & Section Diagram at bottom of sheet.

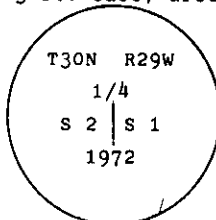
CERTIFIED CORNER RECORDATION

Corner 1/4 Cor. of Secs. 1 & 2 T. 30 N. R. 29 W. P.M.M. Lincoln County

- I. 1903 original G.L.O. record by George A. Fessenden and Ranney Y. Lyman: "Set a slate stone, 18x12x6 ins., in the ground, for 1/4 sec. cor., mkd. 1/4 on W. face, from which:

A pine 3/4 ins. dia., bears S82° E, 65 lks. dist., mkd. 1/4 S1 BT.
A pine, 4 ins. dia., bears N82° 30' W, 124 lks. dist., mkd. 1/4 S2 BT."

1972 B.L.M. remonumentation by Joseph E. French: "At the corner point set a 2 1/2 ins. iron post, 30 ins. long, 2 1/2 ins. diam., 24 ins. in the ground, with brass cap mkd. as shown. Buried original stone alongside and raise a flat mound of stone, 3 ft. base, around the iron pipe."



from which:

A pine, 8 ins. diam., bears N42° 1/4' E, 18 lks. dist., mkd. 1/4 S1 B.T.

Buried original stone alongside and raise a flat mound of stone, 3 ft. base, around the iron pipe."

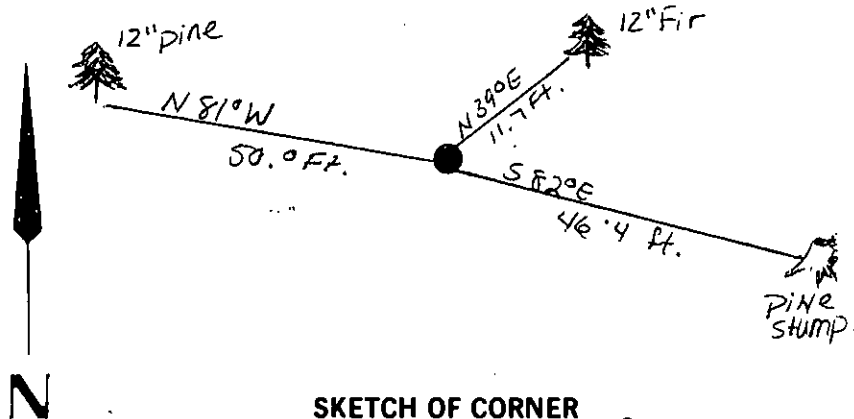
- II. Found a 2 1/2 ins. diam., B.L.M. brass cap, firmly set 6 ins. above the ground, mkd. as shown, with a Small rock mound around corner, from which:

A fir, 12 ins. diam., bears N39° E, 11.7 ft. dist. Healed face.
A pine stump, 3/4 ins. diam., bears S82° E, 46.4 ft. dist., visible scribe. (original B.T.).
A pine, 12 ins. diam., bears N81° W, 50.0 ft. healed face.

- III. Painted red bands around the bearing trees and attached Land Survey Monument and Bearing Tree signs.

Set a 6 ft. galvanized steel guard post with Property Boundry and Land Survey Monument decals attached, 3 ft. South .

Magnetic Declination: 20° East.



SKETCH OF CORNER

CERTIFICATION

I, Kenneth Kern
certify the information shown herein is true and correct.

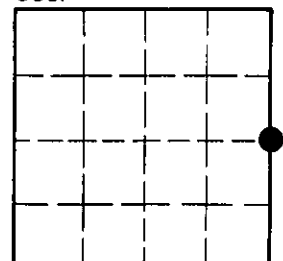
Kenneth R. Kern
Signature Ground Party Chief
Alvah F. Hughes

I, Alvah F. Hughes
certify that this Corner Record correctly represents work performed by me or under my direction in compliance with the Corner Recordation Act" (70-22-101, et seq., M.C.A.)
Alvah F. Hughes
Signature of Surveyor & Seal

Date: 12/15/93 Reg. No. 7322LS
Employer: U.S. FOREST SERVICE

Office of Clerk and Recorder, County of Lincoln. This "corner record" was filed for record on March 8, 1994 was noted on the cross-index plat and is assigned page No. 620, in book No. Coral M. Cummings, Esq.
County Official

Sec. 2



• - corner this sheet

C-21 30 N 29 W
Cross Index No. T. R. PMM