

INSTRUCTIONS

1. Original and/or subsequent record used to evaluate the corner position.
2. Description of evidence found, note discrepancies in the record, state method of establishing lost or obliterated corners.
3. Description of monument and accessories set to perpetuate the corner position.
4. Sketch of corner, show all pertinent data which can best be shown in a sketch example, corner marking, topography ties, position of accessories, etc.
5. Certification must be signed and sealed by Land Surveyor registered in the State of Montana.
6. Fill in Cross Index & Section Diagram at bottom of sheet.

CERTIFIED CORNER RECORDATION

Corner 1/4 Cor. of Secs. 2 & 11 T. 30 N. R. 29 W. P.M.M. Lincoln County

- I. 1903 original G.L.O. record by George A. Pessenden and Ranney Y. Lyman: "Set a limestone, 16 X 8 X 6 ins., 11 ins. in the ground, for 1/4 sec. cor., marked 1/4 on N. face, from which:

A tamrack, 12 ins. dia., bears S11°45'E, 45 lks. dist., mkd 1/4 S11 BT.

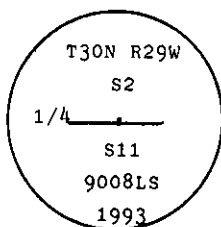
A tamrack, 10 ins. dia., bears N23°30'E, 47 lks. dist., mkd 1/4 S2 BT.

- II. Found a stone, 15 X 6 X 6 ins., with fractured sides, out of the ground visible scribe, from which:

A down tree 10 ins. bears N24°E, 31.0 ft. dist., mkd. 1/4 S2 B.T.

A down tree 12 ins. bears S12°E, 29.7 ft. dist., mkd. 1/4 S11 B.T."

- III. At the corner point, as determined from distance-distance intersection from original bearing trees root crowns. Set a 2 1/2 ins. dia. aluminum pipe, 30 ins. long, 18 ins. in the ground with a 3 1/4 ins. diam., aluminum cap, marked as shown:



Bury original stone alongside new monument and raise a collar of stone around pipe.

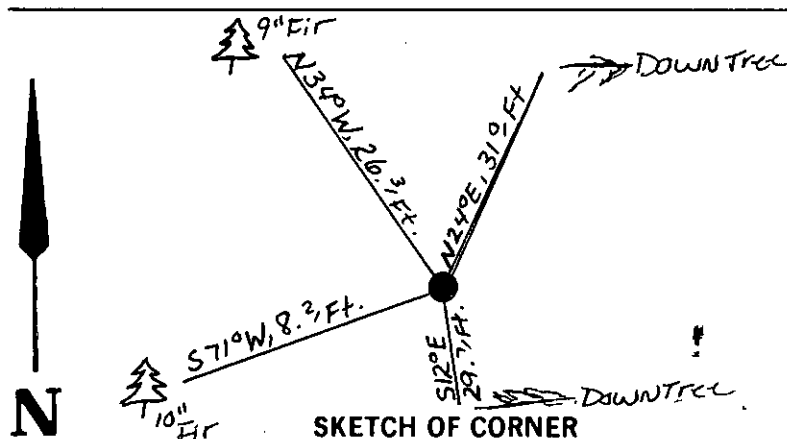
Established two new bearing trees:

A fir, 10 ins. dia., bears S71°W, 8.2 ft. dist., mkd. 1/4 S11 BT.

A fir, 9 ins. dia., bears N34°W, 23.6 ft. dist., mkd. 1/4 S2 BT.

Painted a red band around each bearing tree and attached Land Survey Monument and Bearing Tree signs.
No guard post set.

Magnetic Declination: 20° East.



CERTIFICATION

Kenneth R. Kern

I, Kenneth R. Kern
certify the information shown herein is true and correct.

Signature Ground Party Chief

Alvah F. Hughes

I, Alvah F. Hughes
certify that this Corner Record correctly represents work performed by me or under my direction in compliance with the "Corner Recordation Act" (70-22-101, et seq., M.C.A.).

Signature of Surveyor & Seal

Date: 12/15/93 Reg. No. 9008LS

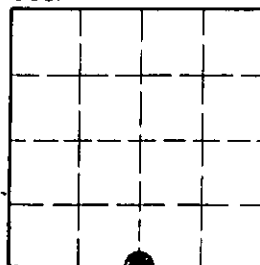
Employer: U.S. FOREST SERVICE

Office of Clerk and Recorder, County of Lincoln. This "corner record" was filed for record on March 5, 1994 was noted on the cross-index plat and is assigned page No. 6206, in book No. Coral M. Cummings & ASB

County Official

Cross Index No. E-18 T. 30N R. 29W P.M.M.

Sec 2



• - corner this sheet