

INSTRUCTIONS

1. Original and/or subsequent record used to evaluate the corner position.
2. Description of evidence found, note discrepancies in the record, state method of establishing lost or obliterated corners.
3. Description of monument and accessories set to perpetuate the corner position.
4. Sketch of corner, show all pertinent data which can best be shown in a sketch example, corner marking, topography ties, position of accessories, etc.
5. Certification must be signed and sealed by Land Surveyor registered in the State of Montana.
6. Fill in Cross Index & Section Diagram at bottom of sheet.

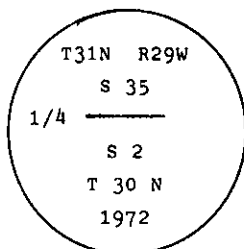
CERTIFIED CORNER RECORDATION

Corner 1/4 Cor. of Secs. 2 & 35 T. 30 N. R. 29 W. P.M.M. Lincoln County

I. 1898 original G.L.O. record by Paul S. A. Bickel: "Set a stone 20x8x8 ins. in the ground, for 1/4 sec. cor., mkd. 1/4 on N. face, from which:

- A pine, 8 ins. dia., bears S2°50'E, 24 lks. dist., (15.84 ft.) marked 1/4 S2 BT.
A pine, 18 ins. dia., bears N35°40'W, 43 lks. dist., (28.38 ft.) marked 1/4 S35 BT.

1972 B.L.M. remonumentation by Joseph E. French: "At the corner point set a 2 1/2 ins. diam., iron post, 30 ins. long, 2 1/2 ins. diam., 24 ins. in the ground, with brass cap mkd. as shown. Buried stone alongside iron pipe.



from which:

- A pine, 8 ins. diam., bears N41°E, 75 lks. dist., (49.5 ft.) mkd. S35 B.T.
A pine, 10 ins. diam., bears S55°E, 64 lks. dist., (42.2 ft.) mkd. 1/4 S2 B.T."

II. Found a 2 1/2 ins. diam. B.L.M. brass cap, 6 ins. above the ground, mkd. as shown, from which

- A down pine, bears S3°E, 15.8 ft. dist. mkd. 1/4 S.
A stump, bears N36°W, 28.4 ft. dist.
A pine stump, 16 ins. diam., bears N45°E, 49.7 ft. dist., mkd. T.
A pine, 12 ins. diam., bears S55°E, 42.3 ft. dist., mkd. 1/4 S2 B.T.

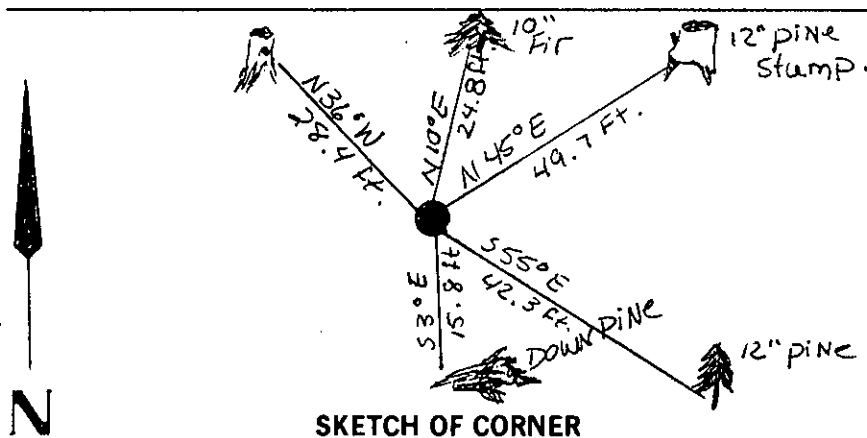
III. Establish one new bearing tree:

- A fir, 10 ins. diam., bears N10°E, 24.8 ft. dist., mkd. 1/4 S35 B.T.

Painted red bands around the bearing trees and attached "Land Survey Monument" and "Bearing Tree" signs.

No guard post set.

Magnetic Declination: 20° East.



SKETCH OF CORNER

CERTIFICATION

Kenneth Kern

I. certify the information shown herein is true and correct.

Kenneth R. Kern
Signature Ground Party Chief

Alvah F. Hughes

I. certify that this Corner Record correctly represents work performed by me or under my direction in compliance with the "Corner Recordation Act" (70-22-101, et seq., M.C.A.)

Alvah F. Hughes
Signature of Surveyor & Seal

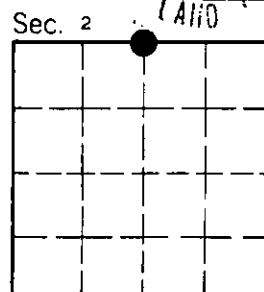
Date: 12/15/93 Reg. No. 900819

Employer: U.S. FOREST SERVICE

Office of Clerk and Recorder, County of Lincoln. This "corner record" was filed for record on March 5, 1994 was noted on the cross-index plat and is assigned page No. 6204, in book No. Coral M. Cummings & Co.

County Official

A-19 Cross Index No. T. 30 N R. 29 W PMM



• - corner this sheet