

INSTRUCTIONS

1. Original and/or subsequent record used to evaluate the corner position.
2. Description of evidence found, note discrepancies in the record, state method of establishing lost or obliterated corners.
3. Description of monument and accessories set to perpetuate the corner position.
4. Sketch of corner, show all pertinent data which can best be shown in a sketch example, corner marking, topography ties, position of accessories, etc.
5. Certification must be signed and sealed by Land Surveyor registered in the State of Montana.
6. Fill in Cross Index & Section Diagram at bottom of sheet.

CERTIFIED CORNER RECORDATION

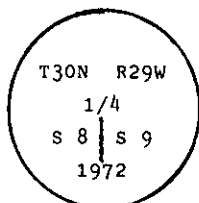
Corner E 1/4 Cor. of Sec. 8 T. 30 N. R. 29 W. P.M.M. Lincoln County

I. 1898 G.L.O. original record by PAUL BICKEL: Set a granite stone, and 2 bearing trees.

1972 B.L.M. remonumentation record by J. E. FRENCH: The 1/4 corner of secs. 8 and 9, monumented with a fractured granite stone, 20 x 8 x 8 ins., set 15 ins. in the ground, mkd. 1/4 on the W. face, from which the original bearing trees:

- A matured larch, 29 ins. diam., bears S. $59^{\circ} 20'$ E., 43 lks. dist., mkd. with an overgrown blaze.
A matured pine, 37 ins. diam., bears S. $23^{\circ} 25'$ W., 13 lks. dist., mkd. 1/4 S8 BT.

At the corner point, set an iron post, 30 ins. long, 2 1/2 ins. diam., 24 ins. in the ground, with brass cap mkd.



from which new bearing trees:

- A fir, 7 ins. in diam., bears S. $88 1/2^{\circ}$ E., 52 lks. dist., mkd. 1/4 S9 BT.
A fir, 6 ins. in diam., bears S. $42 1/2^{\circ}$ W., 37 lks. dist., mkd. 1/4 S8 BT.

Bury the original stone alongside and raise a mound of stone, 3 ft. base, around the iron post.

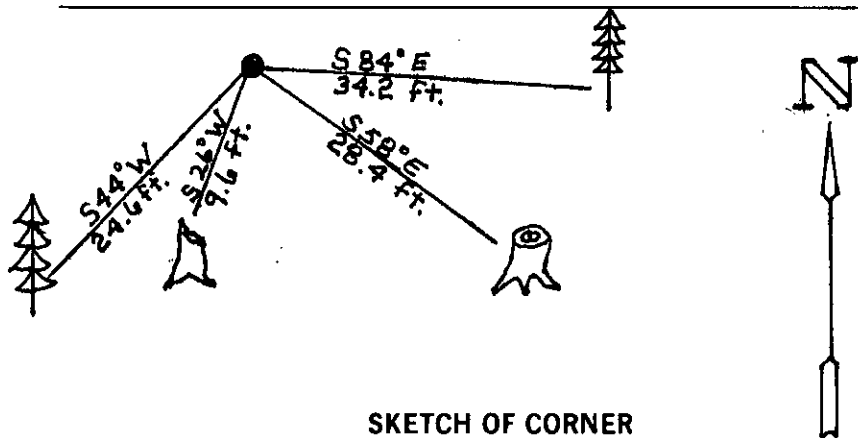
II. Found a 2 1/2 in. diam. iron pipe, 6 ins. above ground, firmly set, with B.L.M. brass cap mkd. as shown above, from which:

- A fir, 10 ins. diam., bears S 84° E, 34.2 ft. (51.8 lks.) dist., healed face.
A larch stump, 32 ins. diam., bears S 58° E, 28.4 ft. (43 lks.) dist., no visible scribe.
A pine stump, 39 ins. diam., bears S 26° W, 9.6 ft. (14.5 lks) dist., no visible scribe
A fir, 7 ins. diam., bears S 44° W, 24.6 ft. (37.2 lks.) dist., visible scribe.

III. Painted a red band around bearing trees and attached Land Survey Monument and Bearing Tree signs.

Set a 6 ft. galvanized steel guard post with Land Survey Marker and Property Bounday decals, NORTH, 1 foot.

Magnetic Declination: 20° East.



SKETCH OF CORNER

CERTIFICATION

Kevin Todd

I, _____
certify the information shown herein is true and correct.

Signature Ground Party Chief

Alvah F. Hughes

I, _____
certify that this Corner Record correctly represents work performed by me or under my direction in compliance with the "Corner Recordation Act" (70-22-101, et seq., M.C.A.)

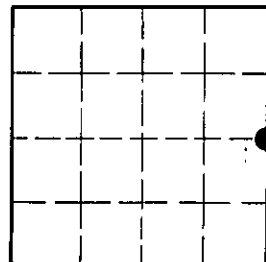
Signature of Surveyor & Seal

Date: 12/17/93 Reg. No. 7322LS

Employer: U.S. FOREST SERVICE

Office of Clerk and Recorder, County of Lincoln. This "corner record" was filed for record on Jan 12, 1994 was noted on the cross-index plat and is assigned page No. 6078, in book No. _____
Coral M. Cumming County Official

Sec. 8



• - corner this sheet

G-9 T. 30 N R. 29 W PMM