

INSTRUCTIONS

1. Original and/or subsequent record used to evaluate the corner position.
2. Description of evidence found, note discrepancies in the record, state method of establishing lost or obliterated corners.
3. Description of monument and accessories set to perpetuate the corner position.
4. Sketch of corner, show all pertinent data which can best be shown in a sketch example, corner marking, topography ties, position of accessories, etc.
5. Certification must be signed and sealed by Land Surveyor registered in the State of Montana.
6. Fill in Cross Index & Section Diagram at bottom of sheet.

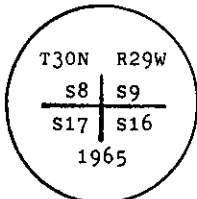
CERTIFIED CORNER RECORDATION

Corner S.E. of Sec. 8 T. 30 N. R. 29 W. P.M.M. Lincoln County

I. 1898 G.L.O. original record by PAUL BICKEL: Set a slate stone, and 4 bearing trees.

1972 B.L.M. remonumentation record by D. LINDENBERG: The cor. of secs. 8, 9, 16, & 17, monumented with a slate stone, 20 x 10 x 7 ins., firmly set, marked with 4 notches on the S. and E. edges and witnessed by the remains of THREE of the original bearing trees.

At the corner point, set an iron post, 30 ins. long, 2 1/2 ins. diam., 6 ins. in the ground to bedrock and in a supporting mound of stone, 5 ft. base to top, with brass cap mkd.



from which the original bearing trees:

- A fir, 14 ins. diam., bears S34° E, 42 lks. dist., mkd. T30N R29W S16 BT. (Record)
- A stump, 33 ins. diam., bears S11° W, 29 lks. dist., mkd. T30N R29W S17 BT. (Record)
- A fir, 18 ins. diam., bears N33° W, 137 lks. dist., mkd. T30N R29W S8 BT. (Record)

The new bearing trees:

- A fir, 9 ins. diam., bears N13° E, 29 lks. dist., mkd. T30N R29W S9 BT.
- A fir, 10 ins. diam., bears S32° W, 128 lks. dist., mkd. T30N R29W S17 BT.

Bury the original stone alongside the iron post.

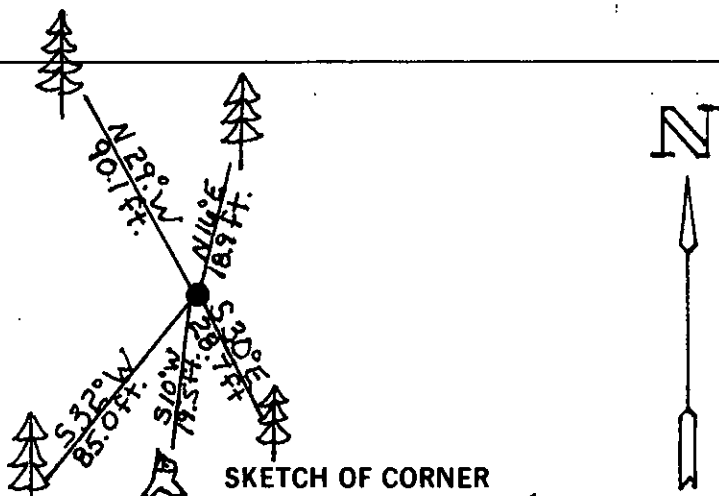
II. Found a 2 1/2 in. diam. iron pipe, 16 ins. above ground, firmly set, with B.L.M. brass cap mkd. as shown above, from which:

- A fir, 13 ins. diam., bears N16° E, 18.9 ft. (28.6 lks.) dist., healed face.
- A fir, 18 ins. diam., bears S30° E, 28.7 ft. (43.5 lks.) dist., healed face
- A rotten stump, bears S10° W, 19.5 ft. (29.5 lks.) dist., no visible marks.
- A fir, 19 ins. diam., bears S32° W, 85.0 ft. (128.8 lks) dist., healed face.
- A fir, 19 ins. diam., bears N29° W, 90.1 ft. (136.5 lks.) dist., healed fac.

III. Painted a red band around bearing trees and attached Land Survey Monument and Bearing Tree signs.

Set a 6 ft. galvanized steel guard post with Land Survey Marker and Property Bounday decals, NORTH, 4 feet.

Magnetic Declination: 20° East.



CERTIFICATION

I. Kevin Todd
certify the information shown herein is true and correct.

Signature Ground Party Chief

I. Alvah F. Hughes
certify that this Corner Record correctly represents work performed by me or under my direction in compliance with the "Corner Recordation Act" (70-22-101, et seq., M.C.A.)

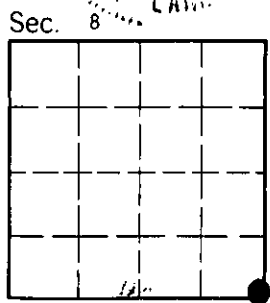
Alvah F. Hughes
Signature of Surveyor & Seal 3220LS

Date: 12/17/93 Reg. No. 7320LS

Employer: U.S. FOREST SERVICE

Office of Clerk and Recorder, County of Lincoln. This "corner record" was filed for record on Jan 12, 1994 was noted on the cross-index plat and is assigned page No. 6077, in book No. _____

Coral M. Cummins, D.S.
County Official



Cross Index No. J-9 T. 30 N R. 29 W P.M.M.

• - corner this sheet