

INSTRUCTIONS

1. Original and/or subsequent record used to evaluate the corner position.
2. Description of evidence found, note discrepancies in the record, state method of establishing lost or obliterated corners.
3. Description of monument and accessories set to perpetuate the corner position.
4. Sketch of corner, show all pertinent data which can best be shown in a sketch example, corner marking, topography ties, position of accessories, etc.
5. Certification must be signed and sealed by Land Surveyor registered in the State of Montana.
6. Fill in Cross Index & Section Diagram at bottom of sheet.

CERTIFIED CORNER RECORDATION

Corner Corner of Sections 14, 15, 22 and 23 T. 30 N. R. 29 W. P.M.M. Lincoln County

I. 1903 Original GLO Record by Fessenden and Lyman

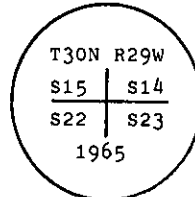
Set a slate stone, 20 x 12 x 4 ins., 15 ins. in the ground, for cor. of secs. 14, 15, 22 and 23, marked with 3 notches on S. and 2 notches on E. edge; from which

- A pine, 18 ins. dia., bears N. 82° E., 125 lks. dist., marked T 30 N R 29 W S 14 B T.
- A pine, 20 ins. dia., bears S. 81° E., 105 lks. dist., marked T 30 N R 29 W S 23 B T.
- A pine, 38 ins. dia., bears S. 57° 15' W., 42 lks. dist., marked T 30 N R 29 W S 22 B T.
- A pine, 20 ins. dia., bears N. 63° 30' W., 175 lks. dist., marked T 30 N R 29 W S 15 B T.

1965 BLM Remonumentation by Lindenberg

The cor. of secs. 14, 15, 22, and 23, monumented with a slate stone, 20 x 12 x 4 ins., loosely set, marked with 3 notches on the S. and 2 notches on the E. sides and witnessed by the remains of the original bearing trees. At the corner point

Set an iron post, 30 ins. long, 2-1/2 ins. diam., 26 ins. in the ground, with brass cap mkd.



from which

The original bearing trees

- A pine, 15 ins. diam., bears N. 82° E., 125 lks. dist., with an overgrown blaze. (Record)
- A pine, 24 ins. diam., bears S. 81° E., 105 lks. dist., with an overgrown blaze. (Record)
- A stump, 22 ins. diam., bears S. 57° W., 42 lks. dist., mkd. T30N R29W S22 BT. (Record)
- A pine, 18 ins. diam., bears N. 63-1/2° W., 175 lks. dist., mkd. T30N R29W S15 BT. (Record).

The new bearing tree

- A pine, 34 ins. diam., bears S. 19° W., 117 lks. dist., mkd. T30N R29W S22 BT.

Bury the original stone alongside the iron post.

II. I found a BLM brass cap 4 ins. above the ground, with a collar of stone, marked as shown above from which

The original bearing trees:

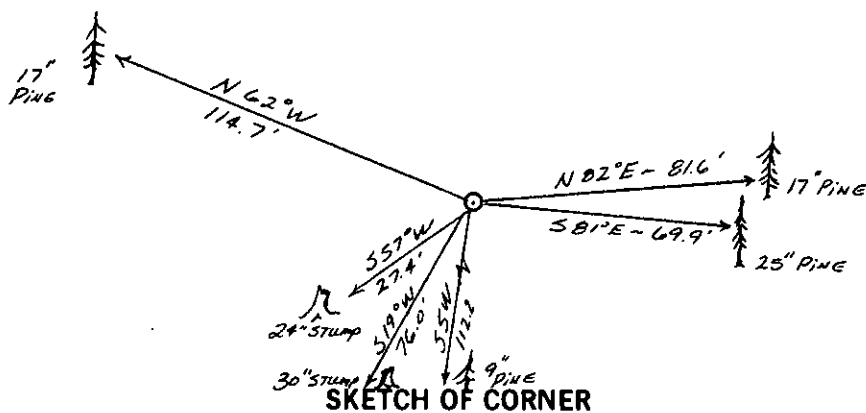
- A pine, 17 ins. diam., bears N. 82° E., 81.6 ft. dist. (record 82.5 ft.), healed face.
- A pine, 25 ins. diam., bears S. 81° E., 69.9 ft. dist., healed face.
- A high pine stump, 24 ins. diam., bears S. 57° W., 27.4 ft. dist., marked 30N 29W 22 BT.
- A pine, 17 ins. diam., bears N. 62° W., 114.7 ft. dist., marked 29W S15.

The BLM bearing tree:

- A pine stump, 30 ins. diam., bears S. 19° W., 76.0 ft. dist. (record 77.22 ft.), marked T30N R29W S22 BT.

III. Rebuilt collar of stone and set a galvanized steel guard post with a Survey Marker decal attached, 3 ft. East of the monument. I painted red bands around bearing trees and attached BT and Land Survey Monument signs. I marked and scribed one new bearing tree:

- A pine, 9 ins. diam., bears S. 5° W., 112.2 ft. dist., scribed T30N R29W S22 BT.



CERTIFICATION

Janet E. Kempff

I, Janet E. Kempff certify the information shown herein is true and correct.

Janet E. Kempff
Signature Ground Party Chief
Alvah F. Hughes

I, Alvah F. Hughes certify that this Corner Record correctly represents this corner as established by me or under my direction in compliance with the "Corner Recordation Act" (70-22-101, et seq., M.C.A.)

Alvah F. Hughes
Signature of Surveyor & Seal
6/3/88 7322

Date: 6/3/88 Reg. No. 7322

Employer: U.S. FOREST SERVICE

Office of Clerk and Recorder, County of Lincoln. This "corner

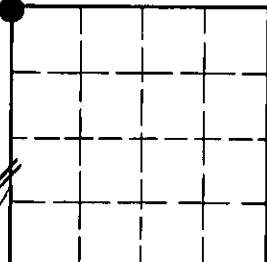
record" was filed for record on June 17, 1988

was noted on the cross-index plat and is assigned page No. 3847, in

book No.

Cross Index No. N 17 T. 30 N R. 29 W PMM

Sec. 23



• - corner this sheet

INSTRUCTIONS TO SURVEYORS FOR COMPLETION OF CERTIFIED CORNER RECORDATION FORMS

I. ORIGINAL AND/OR SUBSEQUENT RECORD:

This item should describe or quote those portions of the original or subsequent record which were used in evaluating the corner position. The original record will usually be the General Land Office field notes. Subsequent record can come from several sources: Previously filed corner records, maps and plats, private and public records, etc. Some of the subsequent record, even though not in the public record, but known to have validity by the surveyor, may be quoted and appropriately noted.

The record data helps support the reestablished corner position because it clearly shows what history the surveyor based his corner position on. In some cases, however, the record may be unknown or not pertinent. A statement to that effect should appear on the corner record.

II. DESCRIPTION OF EVIDENCE FOUND OR METHOD OF LOCATING CORNER POSITION:

This item will describe the original or subsequent record evidence found. If portions of the found evidence cannot be reconciled with the record, then the disregarded record should be noted, and, if possible, an opinion as to its cause narrated.

If no physical evidence of the original or subsequent monuments and accessories can be found, then the method used to reestablish the lost or obliterated corner (single proportion, fence intersection, parcel evidence, terrain calls, centerline of road, etc.) shall be indicated.

III. DESCRIPTION OF MONUMENTS AND ACCESSORIES SET TO PERPETUATE THE CORNER POSITION:

This item should list all details about the corner and its location which will help exclusively identify the corner position; including size and type of monument, how marked if not shown in sketch, and distinguishing topographic calls which help locate the corner. In many cases, instructions on how to find the corner should be included.

References or ties to other corners are optional and may be drawn on the face or back of the corner record form, or references to Certificate of Survey may be made. Separate drawings may be attached to the corner form.

If state plane coordinate values for the corner position are shown, then the control upon which they are based should be indicated.

IV. SKETCH OF CORNER:

This item will usually show how a found or set corner is marked and may also show topography or accessory monuments found or set and their relation to the corner. There is no stipulated format; the sketch could be transcribed field note entries.

V. CERTIFICATION:

The name and signature of the ground party chief is optional.

The Surveyor who performed or directed the field work which is depicted on the "Certified Corner Record" shall sign and affix his seal in the Certification.

The employer blank is optional but useful in tracking down original field note data or adjacent record if, in the future, questions arise about the corner.

VI.

The Cross Index at the bottom of the page should be completed by the Surveyor. Only the single Township Index where the corner is filed shall be completed.

The lower righthand corner is a corner location diagram and should have the pertinent section filled in at the top and a closed circle indicating the appropriate corner position in the section filled in. This is intended to be an aid in searching the "Record" once it has been filed.