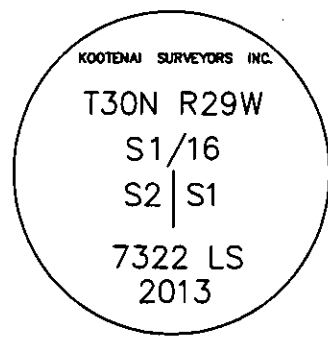


CERTIFIED CORNER RECORDATION

Corner S 1/16 S2|S1 T. 30 N. R. 29 W. P.M.M. Lincoln County

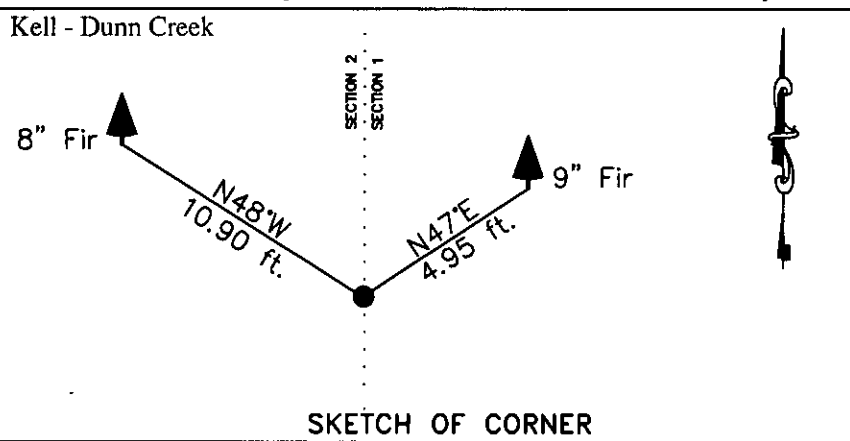
- I. Record: None
- II. Found: No record monuments found.
- III. Perpetuation: At the corner point, determined by survey, set a 5/8 ins. diam. steel rebar 28 ins. long, 26 ins. in the ground, with a 3 1/4 ins. diam. Aluminum cap marked as shown below from which:

A Douglas fir, 9ins. diam., bears N47°E, 4.95 ft. dist., scribed S 1/16 S1 BT.
 A Douglas fir, 8 ins. diam., bears N48°W, 10.90 ft. dist., scribed S 1/16 S2 BT.
 Painted faces and 6 in. wide red bands to all bearing trees and attached Land Survey Monument and Bearing Tree signs.
 Set a 6 ft. steel post 3 ft. west from set monument with attached survey monument decal.
 Magnetic declination: 18° East
 Equipment used: Hand compass and loggers tape



NOTE: Refer to Certificate of Survey No. _____ Lincoln County Records for additional survey information.

Kootenai Surveyors Inc., 314 California Av., Libby, MT. 59923 (406) 293-4354



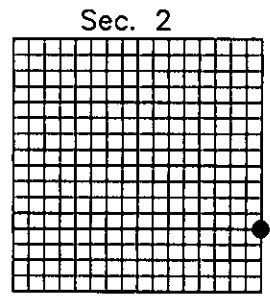
CERTIFICATION

I, Levi Powell
 certify the information shown herein to be true and correct.
Levi Powell
 Signature Ground Party Chief

I, Alvah F. Hughes
 certify that this Corner Record correctly represents the work performed by me or under my direction in accordance with the "Corner Recordation Act" (70-22-101, et seq., P.M.C.A.)
Alvah F. Hughes
 Signature of Surveyor & Seal

Date: 12/11/2013 Reg. No. 7322LS
 Employer: Kootenai Surveyors Inc.

Office of Clerk and Recorder, County of Lincoln This "corner record" was filed for record 248981 BOOK: CCR CC&R'S PAGE: 12095 Pages: 1
 was noted on the cross STATE OF MONTANA LINCOLN COUNTY
 book No. _____ RECORDED: 12/18/2013 3:15 KOI: CC&R'S
 TAMMY D. LAUER CLERK AND RECORDER
 FEE: \$0.00 BY: *Heavenly Deputy*
 FOR: KOOTENAI SURVEYORS INC. P.O. BOX 393, LIBBY, MT 59923



Cross Index No. D 21 T. 30N R. 29W P.M., MT
 Adopted July 1, 1981, Montana Board of Professional Engineers & Land Surveyors

• corner this sheet