

11 12
14 13
Corner _____ T. 30 N. R. 29 W. P.M.M. LINCOLN County

- I. 1903 Subdivision lines of fractional T30N. R29W by George A. Fessenden & Ranney Y. Lyman: Set a slate stone, 14x9x8 ins., 9 ins. in the ground, for cor. of secs. 11, 12, 13 & 14, marked with 4 notches on S. and 1 notch on E. edge: from which

A tamarack, 10 ins. diam., bears N.61°30'E. 26 lks. dist., marked T30N R29W S 12 BT.
A tamarack, 8 ins. diam., bears S.51°30'E. 34 lks. dist., marked T30N R29W S 13 BT.
A fir, 18 ins. diam., bears S.51°W. 56 lks. dist., marked T30N R29W S 14 BT.
A fir, 14 ins. diam., bears N.77°W. 33 lks. dist., marked T30N R29W S 11 BT.

- II. Found: A stone, 8"x4"x14", loosely set and marked with 4 notches on the S. edge and 1 notch on the E. edge and a chiseled "X" on top, from which:

A down larch, 8 ins. diam., bears S80°E, 32.5 ft. dist., with S13 visible. This tree has fallen and slid downhill on steep slope.
A douglas fir, 16 ins. diam., bears S51°W, 36.9 ft. (56 lks.) slope dist., with a healed face.
A douglas fir, 17 ins. diam., bears N77°W, 21.8 ft. horiz. dist., with a healed face.

NOTE: Using a horizontal dist. of 36.9 ft. from the SW bearing tree would put the position for the section corner approximately 5 ft. northeast of the found stone and changes the bearing to the NW bearing tree by 9° and the distance by 3.4 ft. I determine the record distance from the SW bearing tree to have been a slope measurement as this better fits the position of the found stone and the bearing and distance for the NW bearing tree.

- III. At the position of the found stone, set a 2 1/2 in. diam., 30 in. long aluminum pipe, 20 ins. in the ground with a 3 1/4 in. diam. aluminum cap marked as shown. Raise a collar of stone around the monument. Buried the original stone alongside the aluminum pipe. Establish 2 new bearing trees:

A larch, 9 ins. diam., bears N6°E, 17.5 ft. dist., marked T30N R29W S12 BT.
A douglas fir, 11 ins. diam., bears S42°E, 26.6 ft. dist., marked T30N R29W S13 BT.

Painted red the scribed faces and 6 in. red bands around the bearing trees. Attached Land Survey Monument and Bearing Tree signs to bearing trees. Set a 6 ft. steel post 3 ft. North and East, with "Land Survey Monument" and Property Boundary" decals attached.

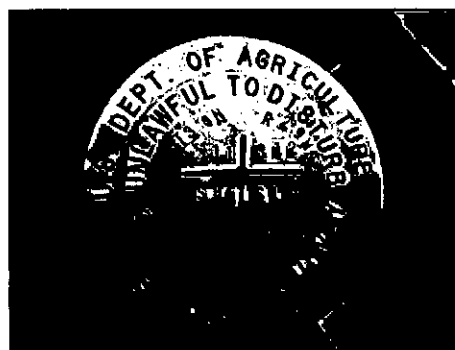
SOUTH EDGE

EAST EDGE

"X" ON TOP

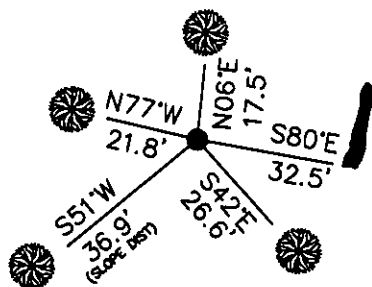


LAT 48°22'13.4"N
LONG 115°15'27.9"W
WGS 84 REC. GRADE



Date of Fieldwork: 9/18/2012
Survey crew: Tom Hommel
Magnetic declination: 14° East assumed
Equipment used: Hand compass and loggers tape

U.S. Forest Service, Supervisors Office, 31374 Hwy. 2, Libby, MT 59923 (406) 293-6211



NOT TO SCALE

CERTIFICATION MONTANA

I, _____, certify the information shown herein is true and correct.

Signature Ground Party Chief

Thomas M. Hommel, 10800LS

I, _____, certify that this Corner Record correctly represents the work performed by me or under my direction in compliance with the "Corner Recordation Act" (70-20-180) of the M.C.A.

Signature of Surveyor & Seal

Date: 12/3/13 Reg. No. 10800LS

Employer: U. S. Forest Service

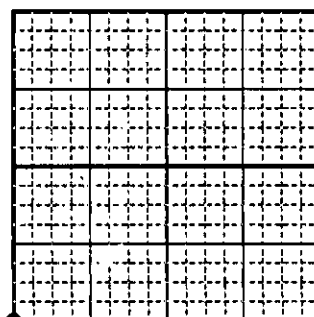
Office of Clerk and Recorder, County of Lincoln

245730 BOOK: CCR CC&R'S PAGE: 12090 Pages: 1
STATE OF MONTANA LINCOLN COUNTY
RECORDED: 12/03/2013 12:05 KOI: CC&R'S
TAMMY D. LAUER CLERK AND RECORDER
FEE: \$0.00 BY: *Thomas M. Hommel*
FOR: US FOREST SERVICE 31374 HWY 2, LIBBY, MONTANA 59923

Cross Index No. J 21 T. 30N. R. 29W. P.M., MT

Adopted July 1, 1981, Montana Board of Professional Engineers & Land Surveyors

Sec. 12



● corner this sheet