

Corner E 1/4 S12 ONLY T. 30 N. R. 29 W. P.M.M. LINCOLN County

- I. 1898 East and North Boundaries of T30N, R29W by Paul S. A. Rickel: Set a slate stone, 20x10x4 ins., 15 ins. in the ground for 1/4 sec. cor. marked 1/4 on W. face, from which:

A fir, 14 ins. diam, bears N69°30'W, 49 lks. dist., marked 1/4 S12 BT.
A fir, 12 ins. diam, bears S89°E, 21 lks. dist., marked 1/4 S7 BT.

1929 Retracement and Resurvey of parts of N., S., E. and W. Boundaries of T30N, R28W by Alex T. Harris and Philip L. Inch: The 1/4 sec. cor. for secs. 7 & 12, which now refers to sec. 12 only, is a slate stone, 5x10x4 ins., above the ground, marked and witnessed as described in the field notes on file in the Public Survey Office. I destroy the markings on the east bearing tree, and take one new tree as follows:

A tamarack, 9 ins. diam, bears S20°15'W, 30 lks. dist., marked 1/4 S12 BT.

1972 BLM Remonumentation by Joseph E. French: The 1/4 sec. cor. of sec. 12, on the E. bdy. of the TP., monumented with a slate stone, 20x10x4 ins., set 15 ins. in the ground, mkd. 1/4 on the W. face, from which the remains of two of the original bearing trees:

A fir snag, 16 ins. diam, bears N89°E, 21 lks. dist., marked 1/4. (Record: S89°E)
A larch, 9 ins. diam, bears S20 1/4°W, 30 lks. dist., marked 1/4 S12 BT.

At the corner point:

Set an iron post, 30 ins. long, 2 1/2 ins. diam., 24 ins. in the ground, with brass cap mkd. (shown below)

From which a new bearing tree:

A larch, 8 ins. diam, bears S87 1/4°W, 122 lks. dist., marked X BT.

bury the original stone alongside and raise a flat mound of stone, 3 ft. base, around the iron post.

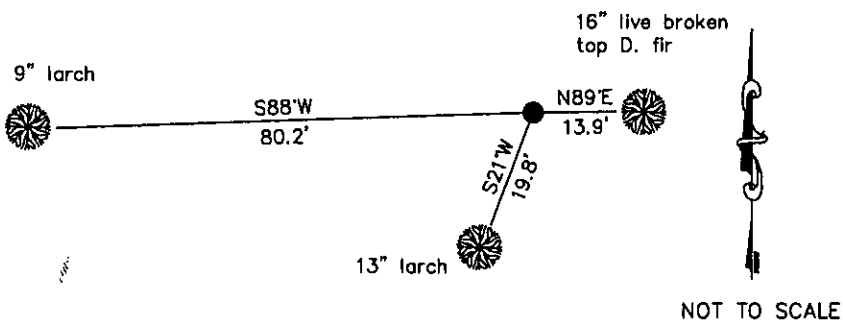
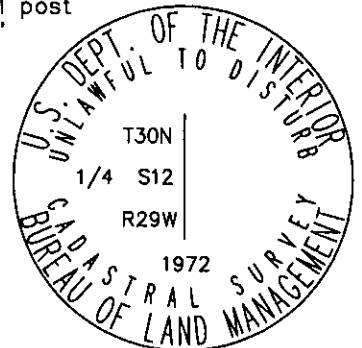
- II. Found: A 2 1/2 in. diam. iron pipe, with a 3 1/4 in. diam. BLM brass cap, 6 ins. above ground, mkd. as shown below, from which:

A live broken top Douglas fir, 16 ins. diam, bears N89°E, 13.9 ft. dist., with a visible S.
A larch, 13 ins. diam., bears S21°W, 19.8 ft. dist., with a healed face.
A larch, 9 ins. diam., bears S88°W, 80.2 ft. dist., with a healed face.

- III. Painted the scribed faces red and 6 in. wide red bands around the bearing trees. Attached Land Survey Monument and Bearing Tree signs to bearing trees. Set a 6 ft. steel post 3 ft. South and West, with "Land Survey Monument" and "Property Boundary" decals attached.

Date of Fieldwork: 4/13/2011
Survey crew: Tom Hommel
Magnetic declination: 20° East assumed
Equipment used: Hand compass and loggers tape

U.S. Forest Service, Supervisors Office, 31374 Hwy. 2, Libby, MT 59923 (406) 293-6211



CERTIFICATION
I, Thomas M. Hommel, 10800LS
certify the information shown herein is true and correct.
Thomas M. Hommel District Chief
Signature of District Chief
I, Marc Burkhardt, 9520LS
certify that the Corner Monument correctly represents the work performed by me or under my direction in compliance with the "Corner Monumentation Book" (BLM-101) (Rev. 1-10-01), M.C.A.)
Marc Burkhardt
Signature of Surveyor
Date: 3/16/2012 No. 9520LS
Employer: U. S. Forest Service

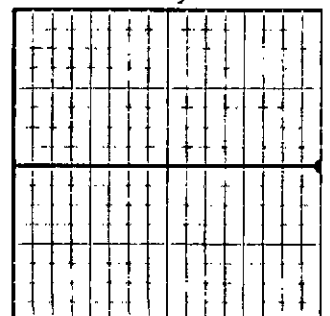
Office of Clerk and Recorder, County of Lincoln

237808 BOOK: CCR CC&R'S PAGE: 11958 Pages: 1
STATE OF MONTANA LINCOLN COUNTY
RECORDED: 03/20/2012 8:35 KOI: CC&R'S
TAMMY D. LAUER CLERK AND RECORDER
FEE: \$0.00 BY: Heather Bean
TO: US FOREST SERVICE 31374 HWY 2, LIBBY, MONTANA 59923,

Cross Index No. G 25 T. 30N. R. 29W. P.M., MT

Adopted July 1, 1981, Montana Board of Professional Engineers & Land Surveyors

Sec. 12 only



● corner this sheet