

INSTRUCTIONS

1. Original and/or subsequent record used to evaluate the corner position.
2. Description of evidence found, note discrepancies in the record, state method of establishing lost or obliterated corners.
3. Description of monument and accessories set to perpetuate the corner position.
4. Sketch of corner, show all pertinent data which can best be shown in a sketch example, corner marking, topography ties, position of accessories, etc.
5. Certification must be signed and sealed by Land Surveyor registered in the State of Montana.
6. Fill in Cross Index & Section Diagram at bottom of sheet.

CERTIFIED CORNER RECORDATION

Corner SE COR. SEC. 4 T. 30N R. 29W P.M.M. Lincoln County

Original Surveyor: Paul Bickel, year: 1898

Set: A slate stone, 16 x 10 x 5 ins 11 ins in the ground, for Cor of Secs 3, 4, 9 and 10, marked with 5 notches on South and 3 notches on East edges from which:

- A 10" diam pine bears N 84-35 E, 11 lks. dist. Marked T30N R29W S3 BT
- A 10" diam pine bears S15-30E, 11 lks. dist. Marked T30N R29W S10 BT
- A 18" diam pine bears S31-20W, 3 lks. dist. Marked T30N R29W S9 BT
- A 12" diam pine bears N32-10W, 15 lks dist. Marked T30N R29W S4 BT

BLM: Surveyor - Year: 1965

Found: A slate stone, 16 x 9 x 5 ins., firmly set, marked with 5 notches on the South and 3 notches on the East edges witnessed by the remains of the original bearing trees, from which: (all found measurement are record)

- A rotted stump, bears N84-35 E., 11 lks. dist., with fallen log mkd. T30N R29W S3 BT
- A stump, 11" diam., bears S 15 1/2 E., 11 lks. dist., mkd. T30N R29W S10 BT
- A stump hole, bears S 31-20 W., 3 lks. dist., with fallen log mkd. T30N R29W S9 BT
- A stump, 10 ins. diam., bears N 32-19 W., 15 lks. dist., mkd. . T30N R29W S4 BT

Set: An iron post, 30 ins. long, 2 1/2 ins. diam., 26 ins. in the ground with brass cap

- A 12" diam. pine, bears N 39 E., 56 lks dist., mkd T30N R29W S3 BT
- A 14" diam. pine, bears S 50 E., 42 lks. dist., mkd T30N R29W S10 BT
- A 25" diam fir, bears S 47 W., 62 lks. dist., mkd T30N R29W S9 BT
- A 14" diam. pine, bears N 31 1/2 W., 33 lks. dist., mkd T30N R29W S4 BT

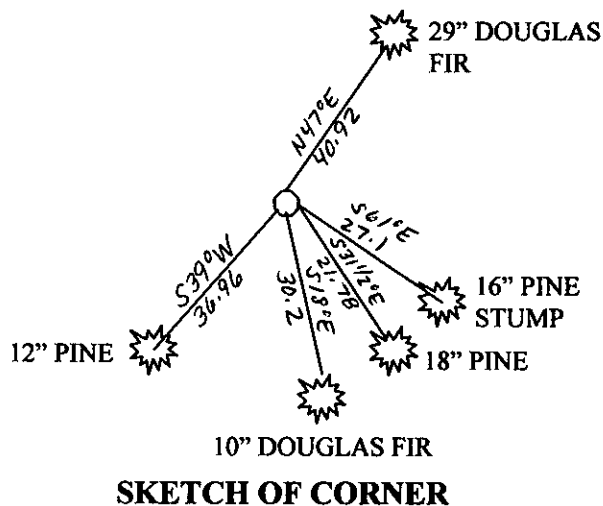
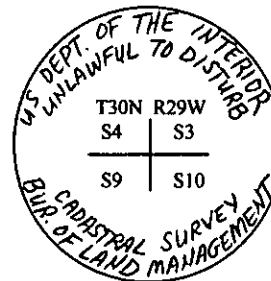
Bury the original stone alongside the iron post.

FOUND:

Found: 3 1/4" Brass cap protruding 0.70' above ground

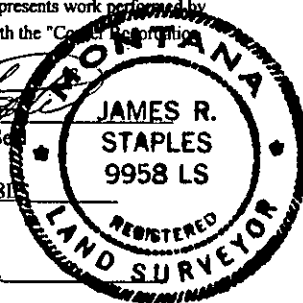
- A 12" diam. Pine, TAG: 56 lks, S39W, T30N R29W, S3, 09/29/64; with open blaze and snow blaze, scribed: T30N R29W S3 BT,
- A 16" diam. Pine stump, S61E, 27.1', some visible scribing, NO TAG
- A 29" diam. Doug Fir, TAG: 62 lks., N47E, T30N R29W, S9, 9-29-64, with healed blaze and snow blaze
- A 18" diam. Pine, TAG: 33 lks, S31 1/2E, T30N R29W, S4, 6-01-65, with healed blaze and snow blaze

ESTABLISH:

Set: A 10" diam. Doug Fir, bears S18E, 30.20' dist., Scribed T30N R29W S10 BT

SKETCH OF CORNER

CERTIFICATION

I, James R. Staples
Certify the information shown herein is true and correct.
Signature Ground Party ChiefI, James R. Staples
certify that this Corner Record correctly represents work performed by
me or under my direction in compliance with the "Corner Recordation
Act" (70-22-101, et seq., M.C.A.)
Signature of Surveyor & SealDate: 10/2/07 Reg. No. 99581Employer: J.R.S. Surveying, Inc.

Office of Clerk and Recorder, County of

This "corner

206772 BOOK: CCR CC&R'S PAGE: 11142 Pages: 1

record" was filed for record on STATE OF MONTANA LINCOLN COUNTYwas noted on the cross-index plat: RECORDED: 10/16/2007 9:23 KOI: CC&R'Sbook no. TAMMY D. LAUER CLERK AND RECORDER

FEE: \$0.00

BY:

TO: J.R.S. SURVEYING P.O. BOX 1050, LIBBY, MONTANA 59923

County Official

Cross Index No. E13 T. 30N R. 29W PMM

Adopted July 1, 1981, Montana Board of Professional Engineers & Land Surveyors

• - Corner this sheet

