

INSTRUCTIONS

1. Original and/or subsequent record used to evaluate the corner position.
2. Description of evidence found, note discrepancies in the record, state method of establishing lost or obliterated corners.
3. Description of monument and accessories set to perpetuate the corner position.
4. Sketch of corner, show all pertinent data which can best be shown in a sketch example, corner marking, topography ties, position of accessories, etc.
5. Certification must be signed and sealed by Land Surveyor registered in the State of Montana.
6. Fill in Cross Index & Section Diagram at bottom of sheet.

CERTIFIED CORNER RECORDATION

Corner M.C. 9/16 T. 30N R. 29W P.M.M. Lincoln County

ORIGINAL:

Original Surveyor: Paul Bickel, year: 1898

Set: A slate stone, 16 x 9 x 5 ins 11" in the ground, for Meander Cor of fractional Secs. 9 and 16 marked MC on East Face with 4 grooves on South face, from which:

A 16" diam cottonwood bears, S15E, 22 lks. dist. marked T30N R29W S16 MC

BT

A 36" diam tamarack bears N31W, 16 lks. dist. marked T30N R29W S9 MC BT

BLM: year 1972 by J.E. French

Found: The meander cor. Of secs. 9 and 16, right bank of the Kootenai River, monumented with a slate stone, 12 x 9 x 6", firmly set, marked MC on the East side and witnessed by the remains of the original bearing trees.

A 21" diam. Cottonwood, bears S15E, 27 lks. Dist., with a burned blaze

A 40" diam. Stump, bears N31W, 16 lks dist., mkd BT

Set: An iron post, 30" long, 2 1/2" diam., 26" in the ground, with brass cap, from which

A 15" diam Larch, bears S75W, 68 lks dist., mkd T30N R29W S16 MC BT

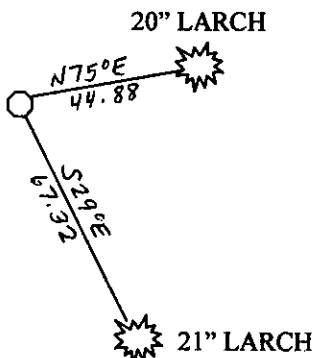
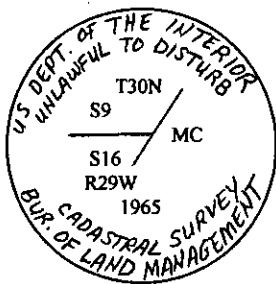
A 11" diam. Larch, bears N29W, 102 lks., mkd T30N R29W S9 MC BT

FOUND:

Found: 3 1/4" Brass cap on 2 1/4" pipe, protruding 0.50' above ground

A 20" diam. Larch, TAG: 68 lks, N75E, T30N R29W, S16, by BB, 9-17-65, with healed blaze

A 21" diam. Larch, TAG: 102 lks, S29E, T30N R29W, S9, BB, 9-17-65, with no scribing and no snow blaze



SKETCH OF CORNER

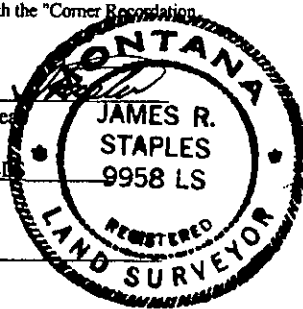
CERTIFICATION

I, James R. Staples,
Certify the information shown herein is true and correct.

James R. Staples
Signature Ground Party Chief

I, James R. Staples
certify that this Corner Record correctly represents work performed by me or under my direction in compliance with the "Corner Recordation Act" (70-22-101, et seq., M.C.A.)

James R. Staples
Signature of Surveyor & Seal
Date: 10/16/07 Reg. No. 9958LS
Employer: J.R.S. Surveying, Inc.



Office of Clerk and Recorder, County of _____
record" was filed for record c
was noted on the cross-index
book no. _____

. This "corner
206765 BOOK: CCR CCR'S PAGE: 11135 Pages: 1
STATE OF MONTANA LINCOLN COUNTY
RECORDED: 10/16/2007 9:16 KOI: CCR'S
TAMMY D. LAUER CLERK AND RECORDER
FEE: \$0.00 BY: *Tammy D. Lauer*
TO: J.R.S. SURVEYING P.O. BOX 1050, LIBBY, MONTANA 59923
County Official

| | | | |
|--|--|---|--|
| | | | |
| | | 9 | |
| | | | |
| | | | |

Cross Index No. _____ T. 30N R. 29W P.M.M.