

## INSTRUCTIONS

1. Original and/or subsequent record used to evaluate the corner position.
2. Description of evidence found, note discrepancies in the record, state method of establishing lost or obliterated corners.
3. Description of monument and accessories set to perpetuate the corner position.
4. Sketch of corner, show all pertinent data which can best be shown in a sketch example, corner marking, topography ties, position of accessories, etc.
5. Certification must be signed and sealed by Land Surveyor registered in the State of Montana.
6. Fill in Cross Index & Section Diagram at bottom of sheet.

## CERTIFIED CORNER RECORDATION

Corner NW Cor. SEC. 31 T. 30N R. 29W P.M.M. Lincoln County

## ORIGINAL:

Paul Bickel - 1898

At 80.00 chains a slate stone 17x12x8 inches was set 12 inches in the ground for corner of Sections 25, 30, 31, and 36. Marked with 1 notch on the south and 5 notches on the north edge; from which:

An 8" fir bears N69°40'E, 91 links (60.06 feet), marked T30N R29W S30 BT.

A 20" tamarack bears S79°20'E, 224 links (147.84 feet), marked T30N R29W S31 BT.

A 12" tamarack bears S52°30'W, 269 links (177.54 feet), marked T30N R30W S36 BT.

A 12" fir bears N78°30'W, 98 links (64.68 feet), marked T30N R30W S25 BT.

## Resurvey - George A. Fessenden and Ranney Y. Lyman - 1903

At 80.00 chains a slate stone 18x12x8 inches was set 12 inches in the ground for corner of Sections 25, 30, 31, and 36. Marked with 1 notch on the south and 5 notches on the north edge; from which:

A 16" tamarack bears N25½°E, 114 links (75.24 feet), marked T30N R29W S30 BT.

A 30" tamarack bears S51½°E, 115 links (75.90 feet), marked T30N R29W S31 BT.

A 12" tamarack bears S61°W, 385 links (254.1 feet), marked T30N R30W S36 BT.

A 24" tamarack bears N46½°W, 65 links (42.90 feet), marked T30N R30W S25 BT.

Surveyor destroyed corner from 1898 survey.

## Bureau of Land Management - 1966

Found corner of Sections 25, 30, 31, and 36 monumented with a slate stone 18x12x8 inches, firmly set, marked with 5 notches on the north edge and 1 notch on the south edge and witnessed by three original bearing trees.

Set an iron post, 30 inches long, 2½ inches diameter, and 24 inches in the ground, with a brass cap, as shown below; from which:

A 20" tamarack bears N25°30'E, 114 links (75.24 feet), marked with an overgrown blaze. (Record)

A 25" tamarack bears S61°E, 385 links (254.1 feet), marked with an overgrown blaze. (Record)

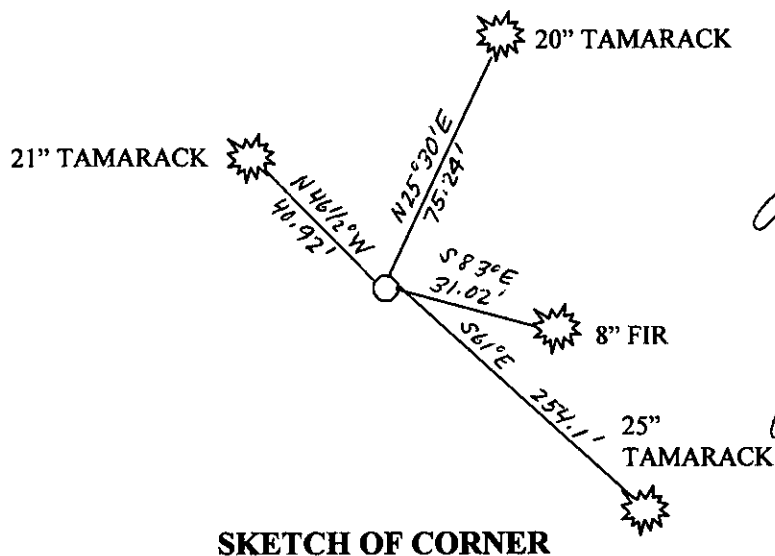
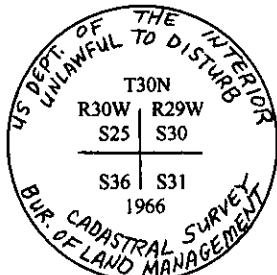
A 21" tamarack bears N46½°W, 62 links (40.92 feet), marked with an overgrown blaze. (Record: N46°30'W, 63 links distant)

## ESTABLISHED:

An 8" fir bears S83°E, 47 links (31.02 feet), marked T30N R29W S31 BT.

Buried the original stone alongside and raise a collar of stone, 3' diameter, around the iron post.

Set a 6' metal post, with land survey monument decal attached, 2.0 feet east and 2.0 feet south of monument.



## CERTIFICATION

I, James R. Staples  
Certify the information shown herein is true and correct.

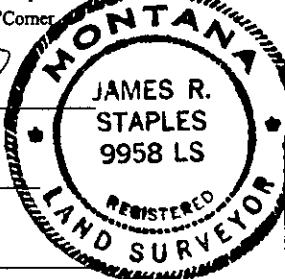
James R. Staples  
Signature Ground Party Chief

I, James R. Staples  
certify that this Corner Record correctly represents work performed by me or under my direction in compliance with the "Corner Recordation Act" (70-22-101, et seq., M.C.A.)

James R. Staples  
Signature of Surveyor & Seal

Date: 10/2/07 Reg. No. 9958LS

Employer: J.R.S. Surveying, Inc.

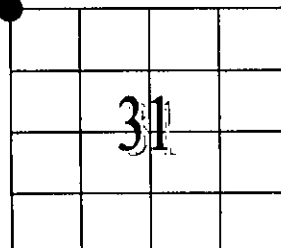


Office of Clerk and Recorder, County of \_\_\_\_\_ This "corner  
record" was filed for record on 206764 BOOK: CCR CC&R'S PAGE: 11134 Pages: 1  
was noted on the cross-index pl: STATE OF MONTANA LINCOLN COUNTY  
book no. \_\_\_\_\_ RECORDED: 10/16/2007 9:15 KOI: CC&R'S  
TAMMY D. LAUER CLERK AND RECORDER  
FEE: \$0.00 BY: James R. Staples Deputy  
TO: J.R.S. SURVEYING P.O. BOX 1050, LIBBY, MONTANA 59923

County Official

Cross Index No. V25 T. 33N R. 34W PMM  
30 29

Adopted July 1, 1981, Montana Board of Professional Engineers & Land Surveyors



• - Corner this sheet