

# CERTIFIED CORNER RECORDATION

Corner NW COR. S29 T. 30 N. R. 29 W. P.M.M. LINCOLN County

I. Record: 1903 original GLO survey by Fessenden and Lyman, set a stone and four bearing trees.

1965 BLM Remoumentation by D. Lindenburg: Set an iron post, 30 ins. long, 2 1/2 ins. diam., 24 ins. in the ground, with brass cap mkd. as shown below from which:

- A larch, .11 ins. diam., bears N. 55°E., 26 lks.(17.16 ft.) dist., with overgrown blaze.
- A larch, 7 ins. diam., bears S. 8°15'E., 31 lks.(20.46 ft.) dist., with overgrown blaze.
- A larch, 13 ins. diam., bears S. 12°W., 53 lks.(34.98 ft.) dist., with overgrown blaze.
- A larch, 10 ins. diam., bears N. 75°W., 26 lks.(17.16 ft.) dist., with overgrown blaze.

II. Found: A 3 1/4 ins. diam. BLM brass cap on a 2 1/2 ins. diam. iron pipe firmly set from which:

- A larch, 10 ins. diam., bears S. 9°E., 20.45 ft. dist., with healed face.
- A larch, 12 ins. diam., bears S. 13°W., 35.00 ft. dist. with healed face.
- A larch, 14 ins. diam., bears N. 75°W., 17.10 ft. dist. with healed face.
- A steel post with U.S.D.A stickers bears West 1.50 ft. dist.

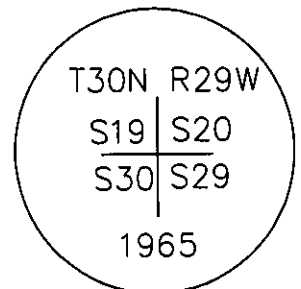
III. Perpetuation: Establish one bearing tree described below:

A larch, 8 ins. diam., bears N. 75°E., 36.70 ft. dist., mkd. T30N R29W S20 BT.

Painted faces and 6 in. wide red bands to all bearing trees and attached bearing tree and Land Survey Monument signs.

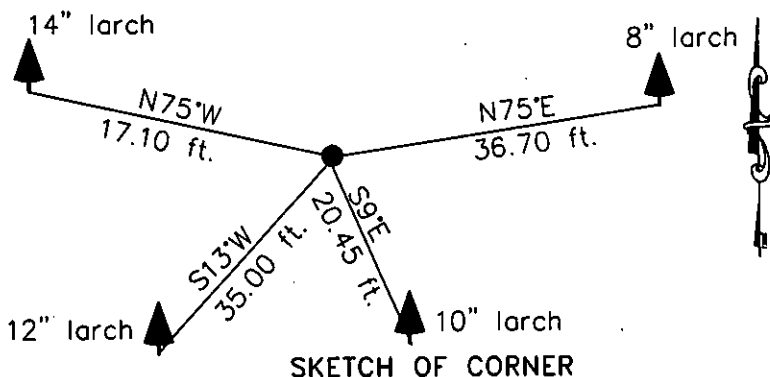
Magnetic declination: 18° East

Equipment used: Hand compass and loggers tape



Kootenai Surveyors Inc., 314 California Av., Libby, MT. 59923 (406) 293-4354

PEOPLES CR. - PCTC



SKETCH OF CORNER

## CERTIFICATION

I, Levi Powell  
certify the information shown herein is true and correct.  
*Levi Powell*  
Signature of Ground Party Chief  
I, Alvah F. Hughes  
certify that this Corner Record correctly represents work performed by me or under my direction in compliance with the "Corner Recordation Act" (7-702-22-101, et seq., M.C.A.)  
*Alvah F. Hughes*  
Signature of Surveyor & Seal  
Date: 6/29/2007 Reg. No. 7322  
Employer: Kootenai Surveyors Inc.

Office of Clerk and Recorder, County of Lincoln This "corner

record" was filed for record on

205553 BOOK: CCR CC&R'S PAGE: 11101 Pages: 1

was noted on STATE OF MONTANA LINCOLN COUNTY

book No. RECORDED: 08/24/2007 8:46 KOI: CC&R'S

TAMMY D. LAUER CLERK AND RECORDER

FEE: \$0.00

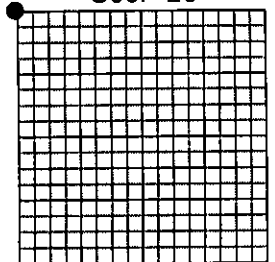
BY: *Levi Powell*

TO: AL HUGHES-SURVEYOR P.O. BOX 393, LIBBY MT 59923

Cross Index No. R 05 T. 30N R. 29W P.M., MT

Adopted July 1, 1981, Montana Board of Professional Engineers & Land Surveyors

Sec. 29



• corner this sheet