

CERTIFIED CORNER RECORDATION

Corner N 1/4 COR. S29 T. 30 N. R. 29 W. P.M.M. LINCOLN County

I. Record: 1903 original GLO survey by Fessenden and Lyman, set a stone and two bearing trees.

1965 BLM Remoumentation by D. Lindenburg: Set on iron post, 30 ins. long, 2 1/2 ins. diam., 24 ins. in the ground, with brass cap mkd. as shown below from which:

- A snag, 6 ins. diam., bears N. 30'E., 16 lks.(10.56 ft.) dist., with visible scribes.
- A larch, 11 ins., diam., bears S. 8'E., 18 lks.(11.88 ft.) dist., with overgrown blaze
- A larch, 6 ins. diam., bears N. 8'E., 24 lks.(15.84 ft) dist., mkd. 1/4 S20 BT.

II. Found: A 3 1/4 ins. diam. BLM brass cap on a 2 1/2 ins. diam. iron pipe firmly set from which:

A larch, 11 ins. diam., bears N. 8'E., 16.25 ft. with overgrown face.

III. Perpetuation: Establish one bearing tree described below:

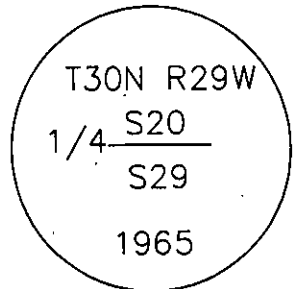
A larch, 8 ins. diam., bears S. 43'W., 21.10 ft. dist., mkd. 1/4 S29 BT.

Painted faces and 6 in. wide red bands to all bearing trees and attached bearing tree and Land Survey Monument signs.

Set a steel post with Survey Monument and Property Line stickers 2.50 ft. East of found monument.

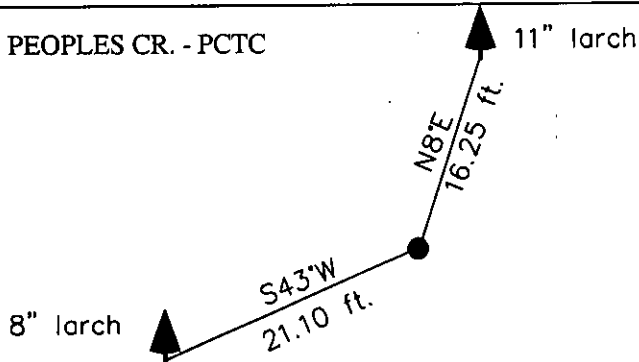
Magnetic declination: 18° East

Equipment used: Hand compass and loggers tape



Kootenai Surveyors Inc., 314 California Av., Libby, MT. 59923 (406) 293-4354

PEOPLES CR. - PCTC



SKETCH OF CORNER

CERTIFICATION

Levi Powell
 certify the information shown herein is true and correct
 Signature of Party Chief
Alvah F. Hughes
 certify that this Corner Record correctly represents work performed by me or under my direction in compliance with the "Corner Recordation Act" (70-22-101, et seq., M.C.A.)
 Signature of Surveyor & Seal LAND SURVEYOR
 Date: 6/29/2007 Reg. No. 7322-ES
 Employer: Kootenai Surveyors Inc.

Office of Clerk and Recorder, County of Lincoln This "corner

record" was filed for record -- 205552 BOOK: CCR CC&R'S PAGE: 11100 Pages: 1

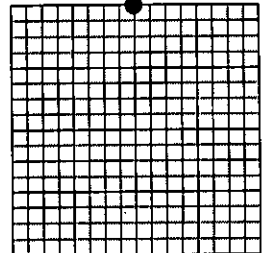
was noted on the cross-in STATE OF MONTANA LINCOLN COUNTY
 RECORDED: 08/24/2007 8:45 KOI: CC&R'S
 book No. TAMMY D. LAUER CLERK AND RECORDER

FEE: \$0.00 BY: Alvah F. Hughes
 TO: AL HUGHES-SURVEYOR P.O. BOX 393, LIBBY MT 59923

Cross Index No. R 07 T. 30N R. 29W P.M., MT

Adopted July 1, 1981, Montana Board of Professional Engineers & Land Surveyors

Sec. 29



• corner this sheet