

CERTIFIED CORNER RECORDATION

Corner C 1/4 S31 T. 30 N. R. 29 W. P.M.M. Lincoln County

I. Record: None

II. Found: No monuments found during area search.

III. Perpetuation: At the corner point, determined by survey, set a 5/8 ins. diam. steel rebar 24 ins. long; 22 ins. in the ground, with a 1 1/2 ins. diam. Aluminum cap marked as shown below from which:

A pine, 14 ins. diam., bears N. 28°E., 31.20 ft. dist., scribed C 1/4 S31 BT.

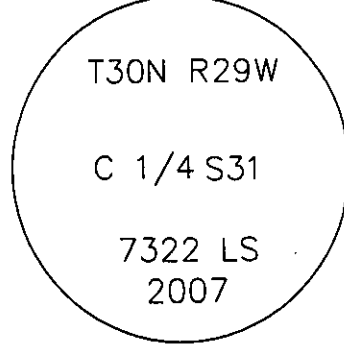
A pine, 27 ins. diam., bears S. 60°W., 13.50 ft. dist., scribed C 1/4 S31 BT.

Painted faces and 6 in. wide red bands to all bearing trees and attached Land Survey Monument and Bearing Tree signs.

Set a steel post on line 3 ft. North of set monument with attached Property line and Land Survey Monument stickers.

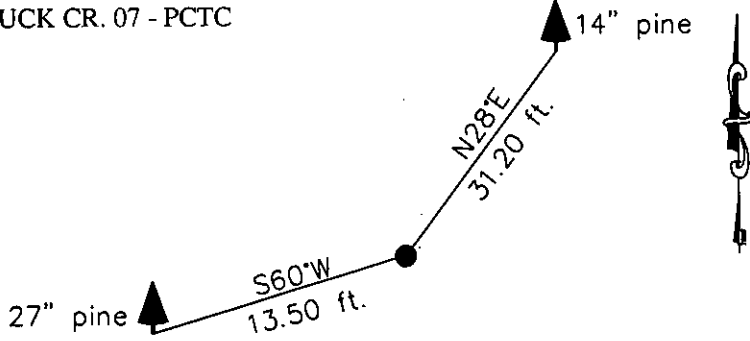
Magnetic declination: 18° East

Equipment used: Hand compass and loggers tape



Kootenai Surveyors Inc., 314 California Av., Libby, MT. 59923 (406) 293-4354

BUCK CR. 07 - PCTC



SKETCH OF CORNER

CERTIFICATION

Kelly Rooney

I certify the information shown herein is true and correct.

Kelly Rooney
Signature Ground Party Chief

Alvah F. Hughes

I certify that this Corner Record correctly represents work performed by me or under my direction in compliance with the Corner Recordation Act, 70-22-1101, et. seq., M.C.A.

Alvah F. Hughes
Signature of Surveyor & Seal

Date: 6/07/2007 Reg. No. 7322 LS

Employer: Kootenai Surveyors Inc.

Office of Clerk and Recorder, County of Lincoln. This "corner

record" was filed for record on 205542 BOOK: CCR CC&R'S PAGE: 11090 Pages: 1

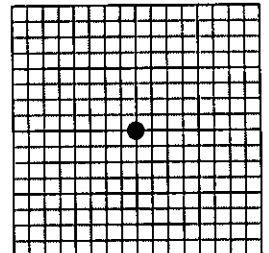
was noted on the cross- STATE OF MONTANA LINCOLN COUNTY
book No. RECORDED: 08/24/2007 8:35 KOI: CC&R'S

TAMMY D. LAUER CLERK AND RECORDER
FEE: \$0.00 BY: *Francie Stewart*
TO: AL HUGHES-SURVEYOR B.O. BOX 393, LIBBY MT 59923

Cross Index No. X 03 T. 30N R. 29W P.M., MT

Adopted July 1, 1981, Montana Board of Professional Engineers & Land Surveyors

Sec. 31



• corner this sheet