

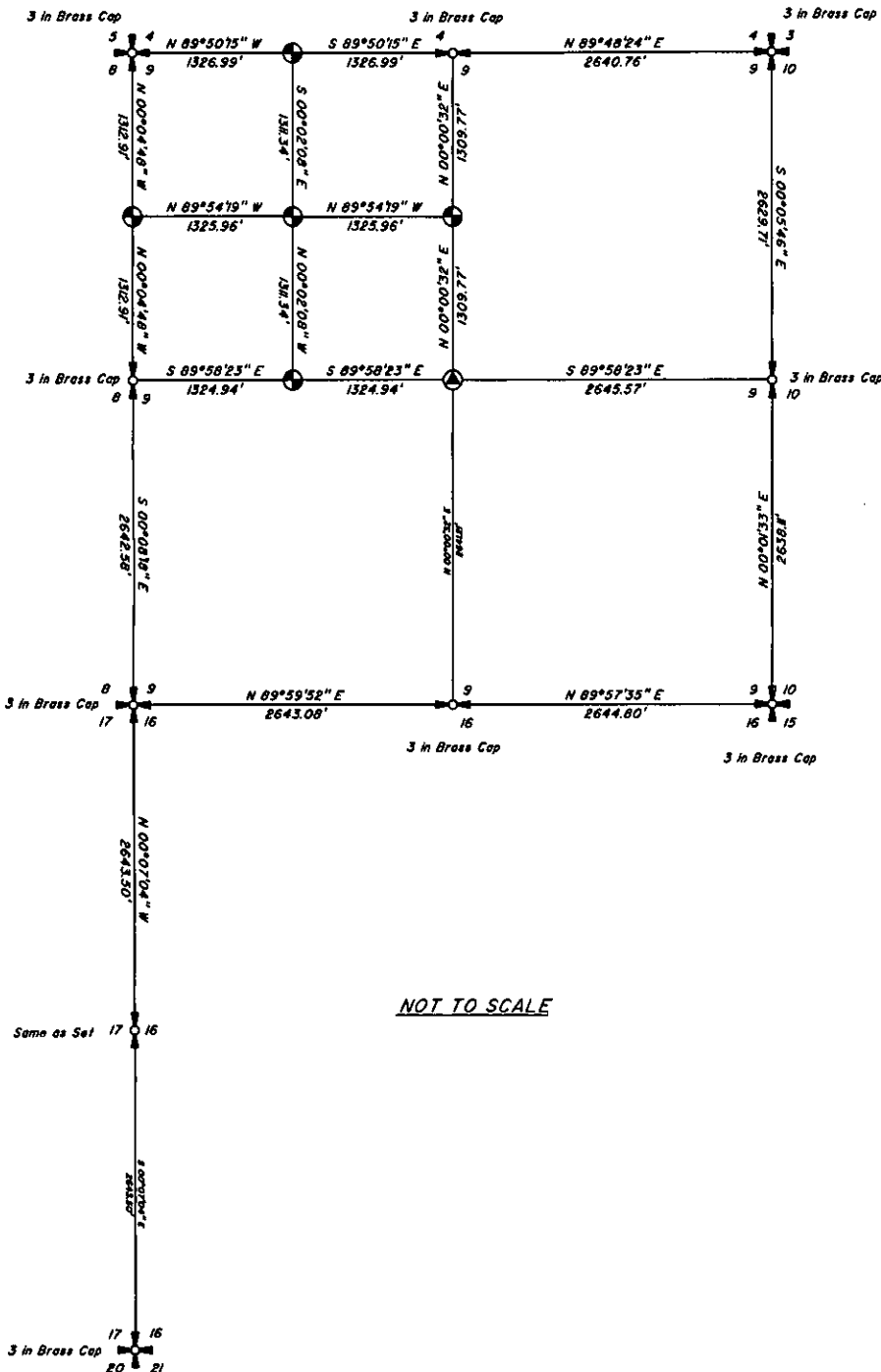
CERTIFIED CORNER RECORDATION

Corner Sec. 9 North 1/16 T. 30 N R. 29 W P.M.M. Lincoln County  
Corner Sec. 8 North 1/16 T. 30 N R. 29 W P.M.M. Lincoln County

ORIGINAL: None.

SUBSEQUENT: None.

PERPETUATION: Set 5/8" x 24" rebar, with plastic cap mkd.  
"Breckenridge 11706LS"



NOT TO SCALE

- SECTION CORNER (AS NOTED)
- 1/4 SECTION CORNER (AS NOTED)
- CENTER SECTION CORNER (SAME AS SET)
- 1/16 SECTION CORNER (SAME AS SET)
- FOUND AS NOTED
- SET 5/8" X 24" REBAR WITH CAP  
STAMPED BRECKENRIDGE 11706LS

SKETCH OF CORNER

CERTIFICATION

I, Lucas Z. Breckenridge  
certify the information shown herein is true and correct.

Lucas Z. Breckenridge  
Signature of Ground Party Chief

I, Darren R. Breckenridge  
certify that this Corner Record correctly represents work  
performed by me or under my direction in compliance with  
the "Corner Recordation Act" (70-22-101, et seq., M.C.A.)

Darren R. Breckenridge  
Signature of Surveyor & Seal

Date: July, 2007 Reg. No. 11706LS

Employer: Montana Mapping, Inc.

Office of Clerk and Recorder, County of Lincoln This "corner

record" was filed for record on 205385 BOOK: CCR CC&R'S PAGE: 11084 Pages: 1

was noted on the cross-index pl STATE OF MONTANA LINCOLN COUNTY

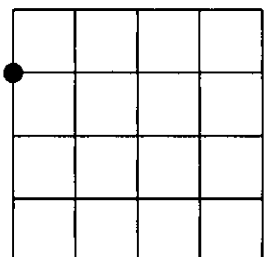
book No. TAMMY D. LAUER CLERK AND RECORDER

FEE: \$0.00 BY: Joanne Lauer  
TO: MONTANA MAPPING, INC.

Cross Index No. T. 30 N R. 29 W PMM

Adopted July 1, 1981, Montana Board of Professional Engineers & Land Surveyors

Sec. 9



corner this sheet