

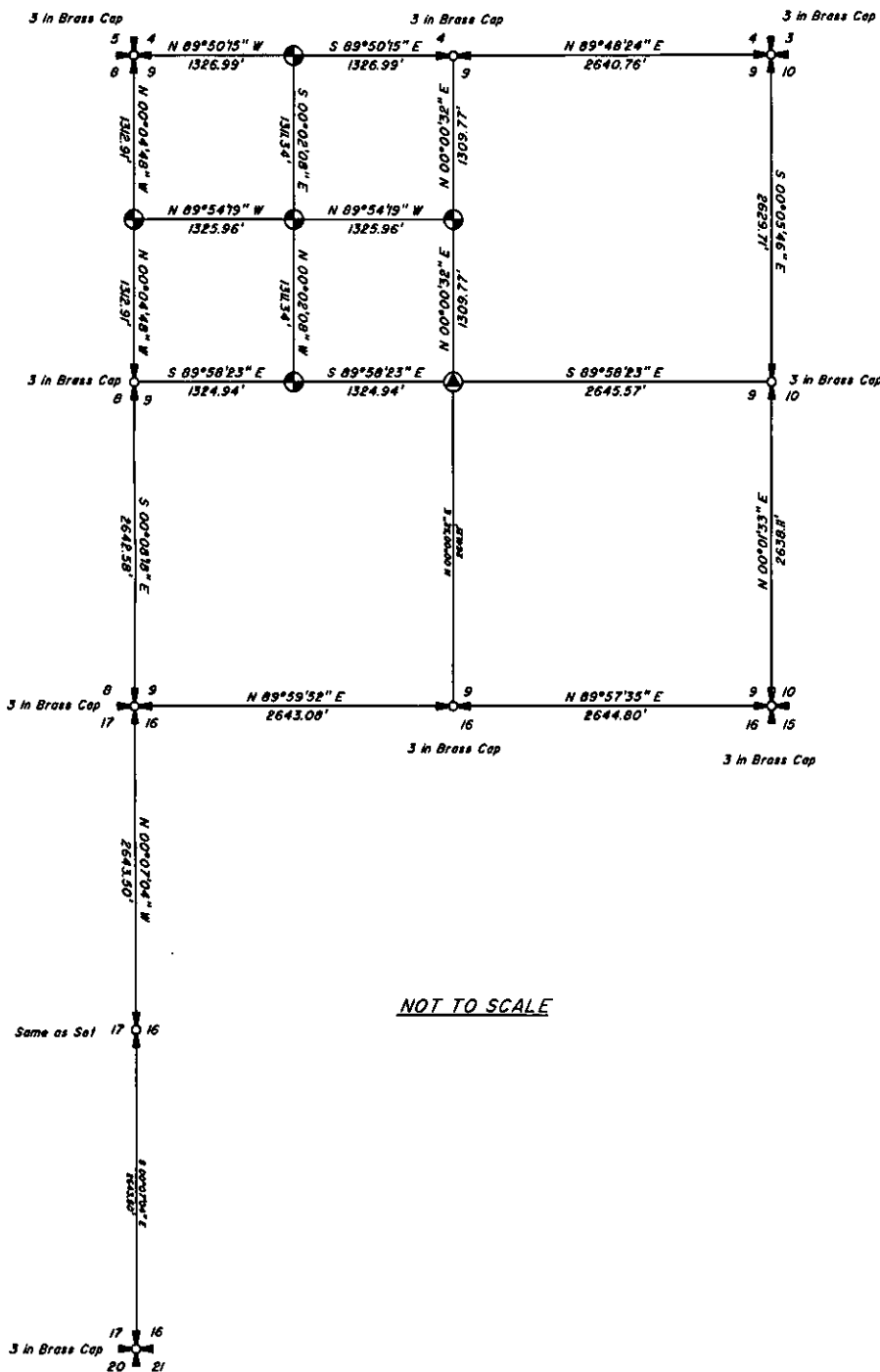
# CERTIFIED CORNER RECORDATION

Corner Sec. 9 Northwest 1/16 T. 30 N R. 29 W P.M.M. Lincoln County  
 Corner \_\_\_\_\_ T. \_\_\_\_\_ R. \_\_\_\_\_ P.M.M. \_\_\_\_\_ County

ORIGINAL: None.

SUBSEQUENT: None.

PERPETUATION: Set 5/8" x 24" rebar, with plastic cap mkd.  
 "Breckenridge 11706LS"



- SECTION CORNER (AS NOTED)
- 1/4 SECTION CORNER (AS NOTED)
- CENTER SECTION CORNER (SAME AS SET)
- 1/16 SECTION CORNER (SAME AS SET)
- FOUND AS NOTED
- SET 5/8" X 24" REBAR WITH CAP STAMPED BRECKENRIDGE 11706LS

NOT TO SCALE

CERTIFICATION	
I, <u>Lucas Z. Breckenridge</u>	
<small>certify the information shown herein is true and correct</small>	
<small>Signature of Ground Party Chief</small>	
I, <u>Darren R. Breckenridge</u>	
<small>certify that this Corner Record correctly represents work performed by me or under my direction in compliance with the "Corner Recordation Act" (70-22-101, et seq., M.C.A.)</small>	
<small>Signature of Surveyor &amp; Seal</small>	
Date: <u>July, 2007</u>	Reg. No. <u>11706LS</u>
Employer: <u>Montana Mapping, Inc.</u>	

SKETCH OF CORNER

Office of Clerk and Recorder, County of Lincoln This "corner

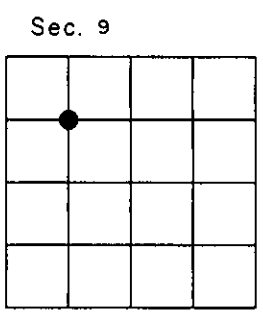
record" was filed for record on 205384 BOOK: CCR CC&R'S PAGE: 11083 Pages: 1

was noted on the cross-index plat STATE OF MONTANA LINCOLN COUNTY RECORDED: 08/20/2007 12:45 KOI: CC&R'S

book No. \_\_\_\_\_ TAMMY D. LAUER CLERK AND RECORDER FEE: \$0.00 BY:

TO: MONTANA MAPPING, INC. Cross Index No. \_\_\_\_\_ T. 30 N R. 29 W PMM

Adopted July 1, 1981, Montana Board of Professional Engineers & Land Surveyors



● corner this sheet