

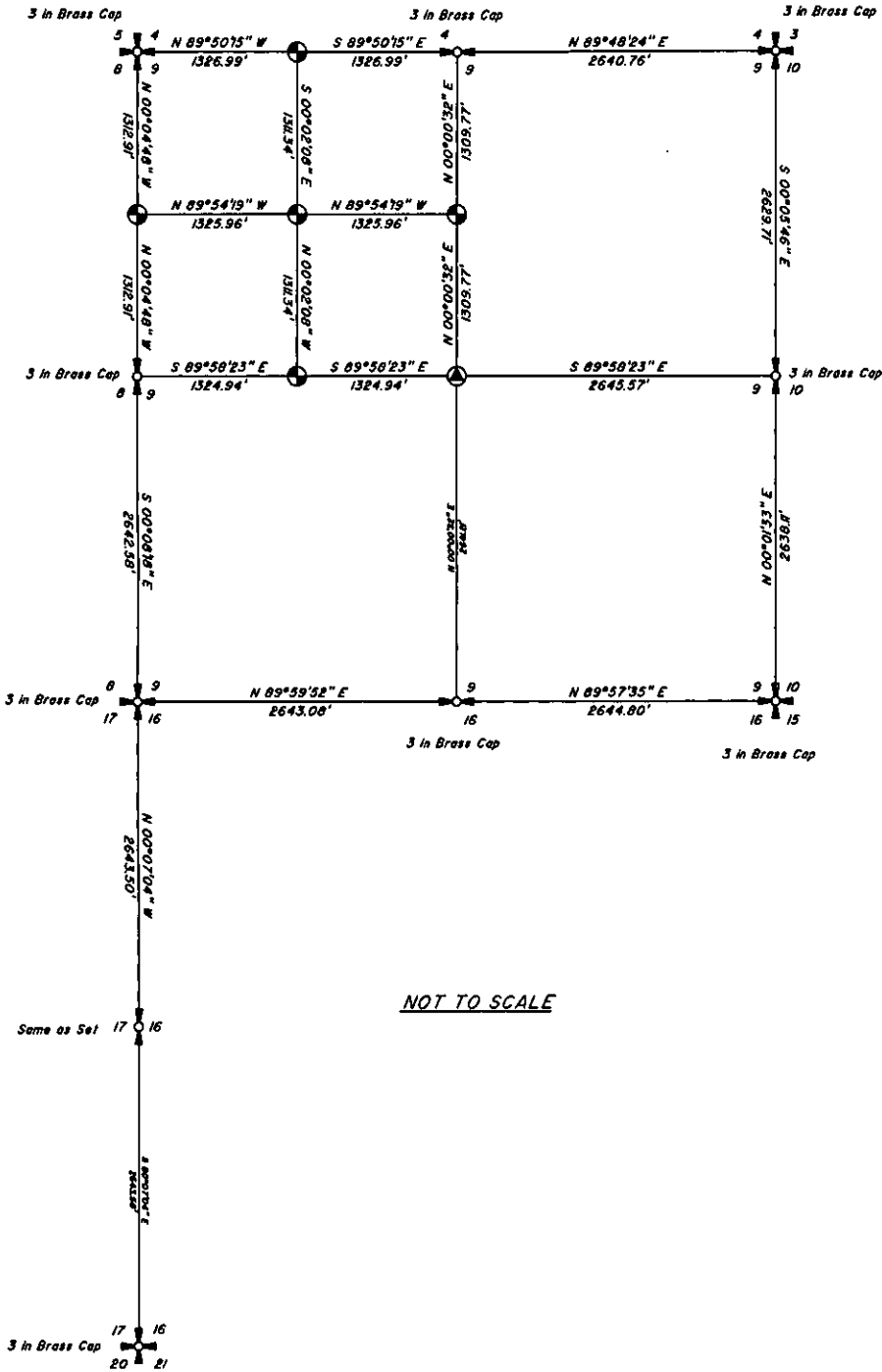
CERTIFIED CORNER RECORDATION

Corner Sec. 9 Center 1/4 T. 30 N R. 29 W P.M.M. Lincoln County
 Corner _____ T. _____ R. _____ P.M.M. _____ County

ORIGINAL: None.

SUBSEQUENT: None.

PERPETUATION: Set 5/8" x 24" rebar, with plastic cap mkd.
 "Breckenridge 11706LS"



- SECTION CORNER (AS NOTED)
- 1/4 SECTION CORNER (AS NOTED)
- CENTER SECTION CORNER (SAME AS SET)
- 1/16 SECTION CORNER (SAME AS SET)
- FOUND AS NOTED
- SET 5/8" X 24" REBAR WITH CAP STAMPED BRECKENRIDGE 11706LS

NOT TO SCALE

CERTIFICATION

I, Lucas Z. Breckenridge
 certify the information shown herein is true and correct.
Lucas Z. Breckenridge
 Signature of Graded Party Chief

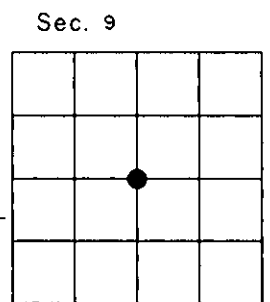
I, Darren R. Breckenridge
 certify that this Corner Record correctly represents work performed by me or under my direction in compliance with the "Corner Recordation Act" (70-22-101 et seq., M.C.A.)
Darren R. Breckenridge
 Signature of Surveyor & Seal

Date: July, 2007 Reg. No. 11706LS
 Employer: Montana Mapping, Inc.

SKETCH OF CORNER

Office of Clerk and Recorder, County of Lincoln . This "corner

record" was filed for record on 205381 BOOK: CCR CC&R'S PAGE: 11080 Pages: 1
 was noted on the cross-index plat, STATE OF MONTANA LINCOLN COUNTY
RECORDED: 08/20/2007 12:30 KOI: CC&R'S
 book No. _____ TAMMY D. LAUER CLERK AND RECORDER
FEE: \$0.00 BY: *Tammy D. Lauer*
TO: MONTANA MAPPING, INC. *Darren R. Breckenridge*
 Cross Index No. _____ T. 30 N R. 29 W PMM



● corner this sheet