

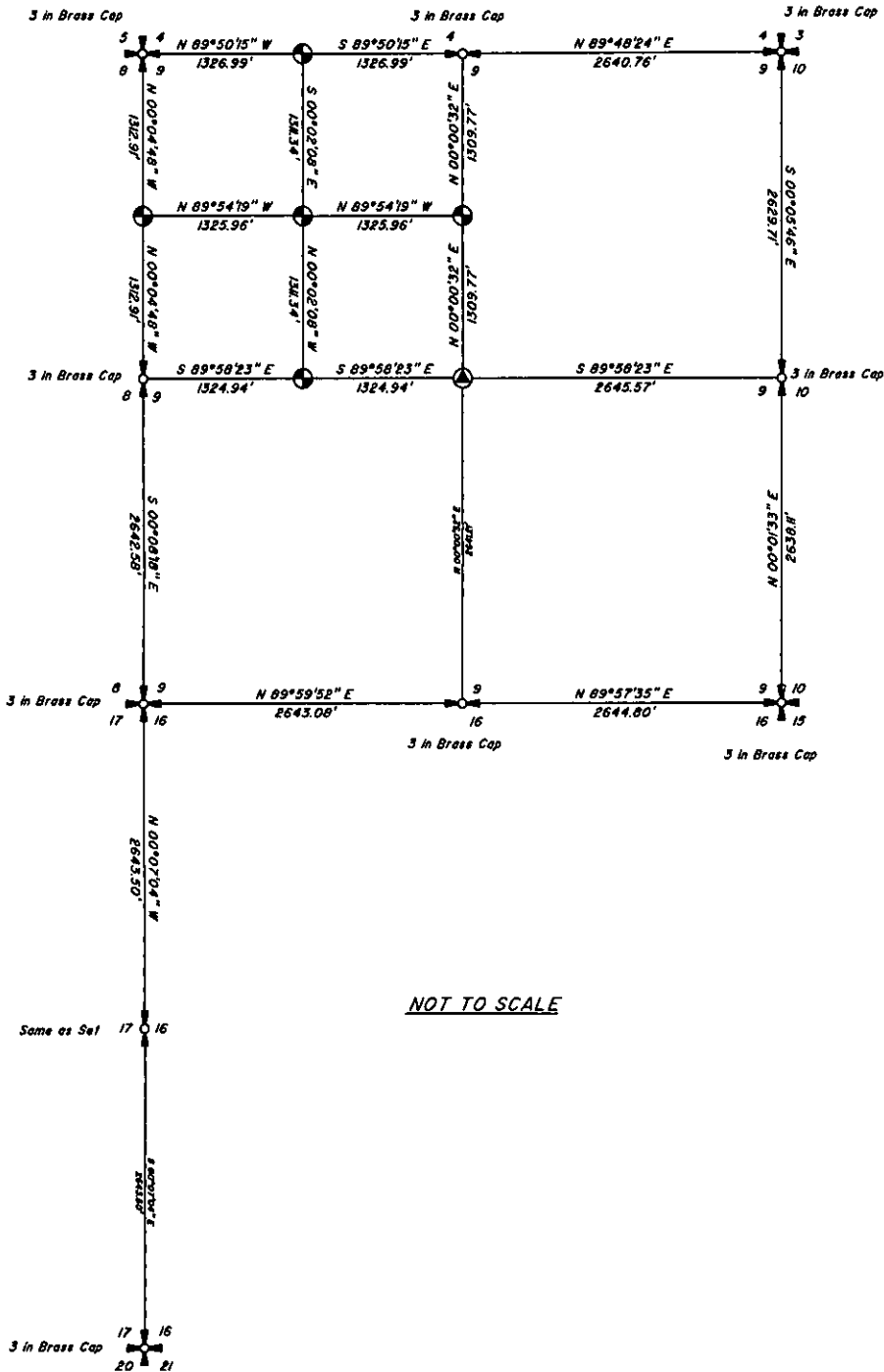
CERTIFIED CORNER RECORDATION

Corner Sec. 16 West 1/4 T. 30 N R. 29 W P.M.M. Lincoln County
Corner Sec. 17 East 1/4 T. 30 N R. 29 W P.M.M. Lincoln County

Original: Set a slate stone 18 x 10 x 6 ins., 12 ins. in the ground.

SUBSEQUENT: None.

PERPETUATION: Set 5/8" x 24" rebar, with plastic cap mkd.
"Breckenridge 11706LS"



- SECTION CORNER (AS NOTED)
- 1/4 SECTION CORNER (AS NOTED)
- CENTER SECTION CORNER (SAME AS SET)
- 1/16 SECTION CORNER (SAME AS SET)
- FOUND AS NOTED
- SET 5/8" X 24" REBAR WITH CAP STAMPED BRECKENRIDGE 11706LS

NOT TO SCALE

SKETCH OF CORNER

CERTIFICATION

1. Lucas Z. Breckenridge
certify the information shown herein is true and correct.
Signature of Ground Party Chief

1. Darren R. Breckenridge
certify that this Corner Record correctly represents work performed by me or under my direction in compliance with the "Corner Recordation Act" (79-22-101, et seq., M.C.A.)
Signature of Surveyor & Seal

Date: July, 2007 Reg. No. 11706LS
Employer: Montana Mapping, Inc.

Office of Clerk and Recorder, County of Lincoln This "corner

record" was filed for record 205379 BOOK: CCR CC&R'S PAGE: 11078 Pages: 1

was noted on the cross-index STATE OF MONTANA LINCOLN COUNTY
RECORDED: 08/20/2007 12:20 KOI: CC&R'S

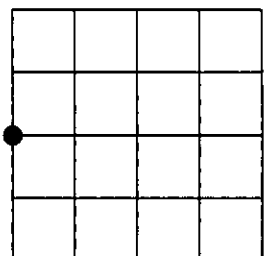
book No. TAMMY D. LAUER CLERK AND RECORDER
FEE: \$0.00 BY: [Signature]

TO: MONTANA MAPPING, INC.

Cross Index No. T. 30 N R. 29 W PMM

Adopted July 1, 1981, Montana Board of Professional Engineers & Land Surveyors

Sec. 16



● corner this sheet