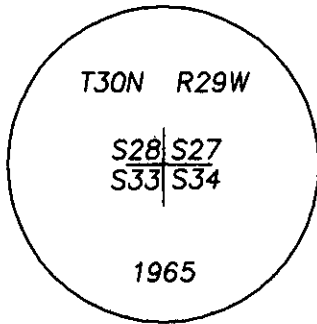
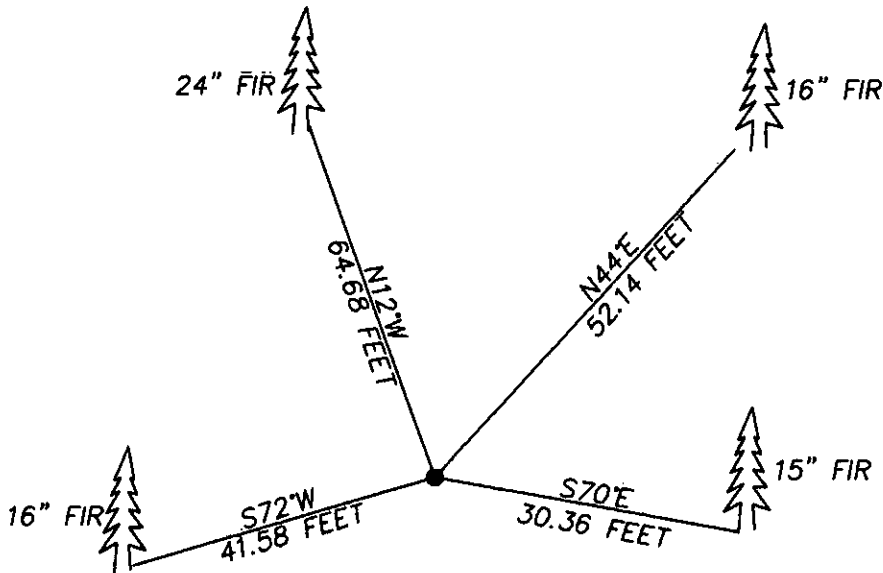


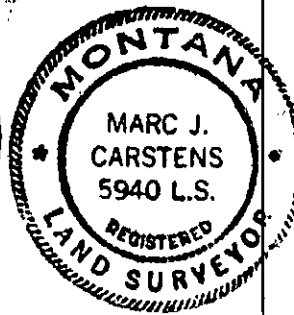
CERTIFIED CORNER RECORDATION

Corner SOUTH WEST SECTION 27 T. 30N R. 29W P.M.M. LINCOLN County

FOUND: 3" B.L.M. BRASS CAP (STAMPED AS SHOWN) FROM WHICH:
 A 24" FIR BEARS N12°W 64.68 FEET WITH SCRIBE
 A 16" FIR BEARS S72°W 41.58 FEET WITH SCRIBE OVERGROWN
 A 16" FIR BEARS N44°E 52.14 FEET WITH SCRIBE OVERGROWN
 A 15" FIR BEARS S70°E 30.36 FEET WITH SCRIBE



SKETCH OF CORNER



CERTIFICATION
 I, DAN CROFT
 certify the information shown herein is true and correct.
Dan Croft
 Signature of Ground Party Chief
MARC J. CARSTENS
 certify that this Corner Record correctly represents work performed by me or under my direction in compliance with the 'Corner Recordation Act' (70-22-101, et seq. M.C.A.)
Marc J. Carstens
 Signature of Surveyor & Seal
 Date: 04-29-04 Reg. No. 5940 LS
 Employer: CARSTENS LAND SURVEYING

Office of Clerk and Recorder, County of LINCOLN. This 'corner record' was filed for record on Doc# 176049 5/10/04 was noted on the cross-index plat and is assigned page No. 10640, in book No. 176049

County Official

Cross Index No. V-13 T. 30N R. 29W P.M.M.

Adopted July 1, 1981, Montana Board of Professional Engineers & Land Surveyors

Sec. 27

• corner this sheet