

STATE OF MONTANA LINCOLN COUNTY

RECORDED: 05/07/2004 2:25 KOI: CC&amp;R'S

CORAL M. CUMMINGS CLERK AND RECORDER

FEE: \$0.00

TO: FILED

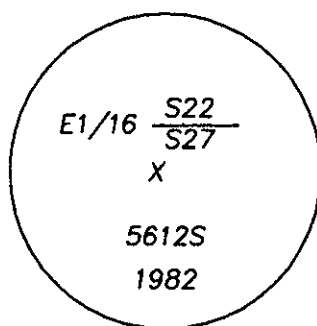
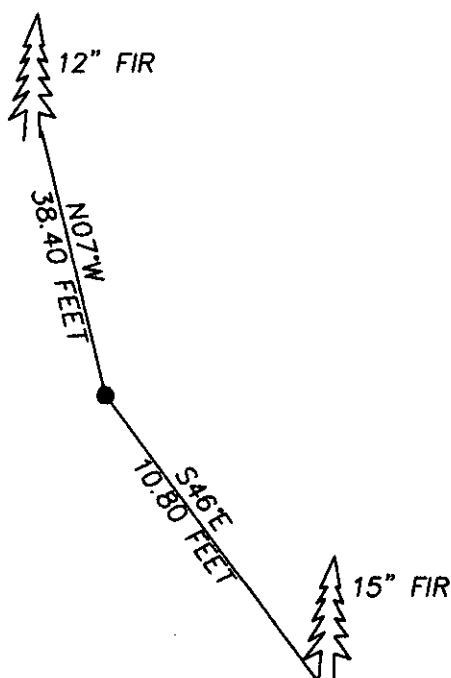
BY:

*Jaumei Deen*  
Deputy

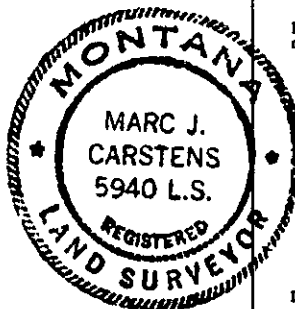
## CERTIFIED CORNER RECORDATION

Corner EAST 1/16 SECTION 27&22 T. 30N R. 29W P.M.M. LINCOLN County

FOUND: 3" U.S.D.A. ALUM CAP( STAMPED AS SHOWN ) FROM WHICH:  
 A 12" FIR BEARS N07°W 38.40 FEET WITH SCRIBE PITCHED OVER  
 A 15" FIR BEARS S46°E 10.80 FEET WITH SCRIBE OVERGROWN.



SKETCH OF CORNER



## CERTIFICATION

1. DAN CROFT

certify the information shown herein is true and correct.

Signature Ground Party Chief

MARC J. CARSTENS

I certify that this Corner Record correctly represents work performed by me or under my direction in compliance with the "Corner Recordation Act" (70-22-101, et seq., M.C.A.)

Signature of Surveyor &amp; Seal

Date: 04-29-04 Reg. No. 5940 L.S.Employer: CARSTENS LAND SURVEYING

Office of Clerk and Recorder, County of LINCOLN . This 'corner  
 record' was filed for record on 176047 5/10/4

was noted on the cross-index plat and is assigned page No. 10638 , in

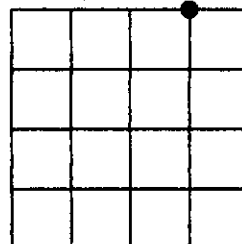
*ddc*  
 book No. 176047

County Official

Cross Index No. R-16 T. 30N R. 29W PMM

Adopted July 1, 1981, Montana Board of Professional Engineers &amp; Land Surveyors

Sec. 27



• corner this sheet