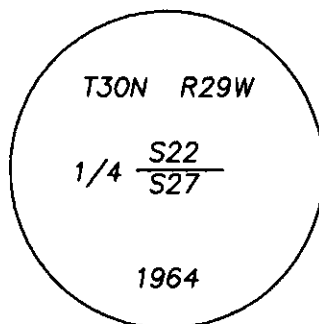
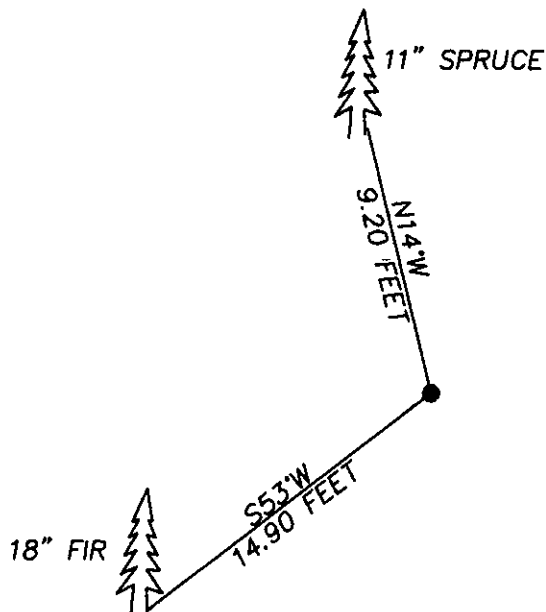


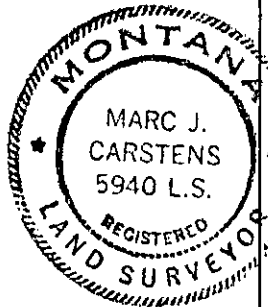
## CERTIFIED CORNER RECORDATION

Corner NORTH 1/4 SECTION 27 T. 30N R. 29W P.M.M. LINCOLN County

FOUND: 3" B.L.M. BRASS CAP( STAMPED AS SHOWN ) FROM WHICH:  
A 11" SPRUCE BEARS N14°W 9.20 FEET WITH SCRIBE OVERGROWN  
A 18" FIR BEARS S53°W 14.90 FEET WITH SCRIBE OVERGROWN.



SKETCH OF CORNER



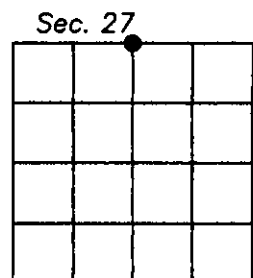
CERTIFICATION  
I, DAN GROET  
certify the information shown herein is true and correct.  
Dan Groet  
Signature Ground Party Chief  
MARC J. CARSTENS  
I certify that this Corner Record correctly represents work  
performed by me or under my direction in compliance with  
the 'Corner Recordation Act' (70-22-101, et seq., MCA.)  
Marc J. Carstens  
Signature of Surveyor & Seal  
Date: 04-29-04 Reg. No. 5940 L.S.  
Employer: CARSTENS LAND SURVEYING

Office of Clerk and Recorder, County of LINCOLN. This 'corner  
record' was filed for record on Doc# 176046 5/10/04  
was noted on the cross-index plat and is assigned page No. 10637, in  
doc  
book No. 176046

County Official

Cross Index No. R-15 T. 30N R. 29W P.M.M.

Adopted July 1, 1981, Montana Board of Professional Engineers & Land Surveyors



• corner this sheet