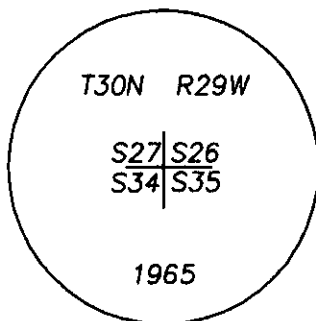
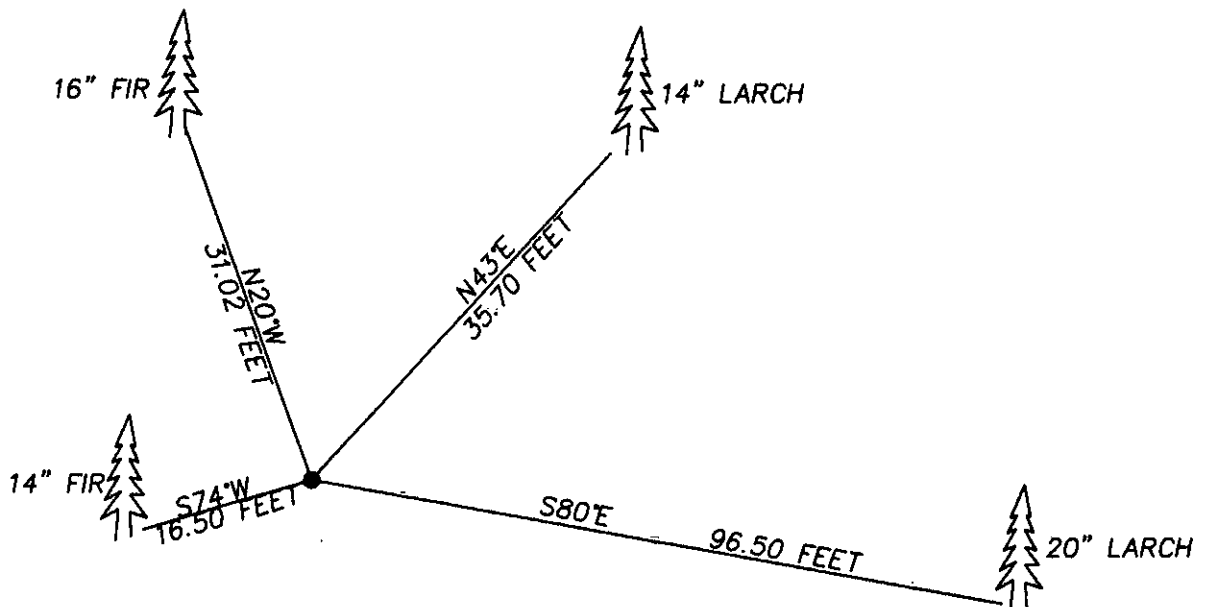


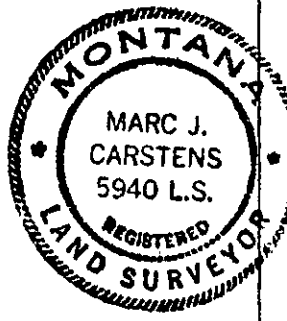
CERTIFIED CORNER RECORDATION

Corner SOUTH EAST SECTION 27 T. 30N R. 29W P.M.M. LINCOLN County

FOUND: 3" B.L.M. BRASS CAP(STAMPED AS SHOWN) FROM WHICH:
A 16" FIR BEARS N20°W 31.02 FEET WITH SCRIBE OVERGROWN
A 14" FIR BEARS S74°W 16.50 FEET WITH SCRIBE OVERGROWN
A 14" LARCH BEARS N43°E 35.70 FEET WITH SCRIBE OVERGROWN
A 20" LARCH BEARS S80°E 96.50 FEET WITH SCRIBE OVERGROWN



SKETCH OF CORNER



CERTIFICATION
I, DAN CROFT
certify the information shown herein is true and correct.
Dan Croft
Signature of Ground Party Chief
MARC J. CARSTENS
certify that this Corner Record correctly represents work
performed by me or under my direction in compliance with
the "Corner Recordation Act" (70-22-101, et seq., M.C.A.)
Marc J. Carstens
Signature of Surveyor & Seal
Date: 04-29-04 Reg. No. 5940 LS
Employer: CARSTENS LAND SURVEYING

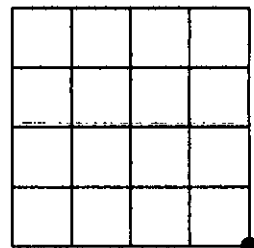
Office of Clerk and Recorder, County of LINCOLN . This "corner
record" was filed for record on Doc # 176045 5/10/4
was noted on the cross-index plat and is assigned page No. 10636 , in
book No. 176045

County Official

Cross Index No. V-17 T. 30N R. 29W PMM

Adopted July 1, 1981, Montana Board of Professional Engineers & Land Surveyors

Sec. 27



• corner this sheet