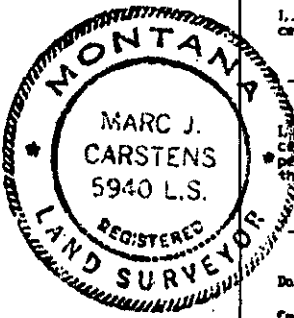
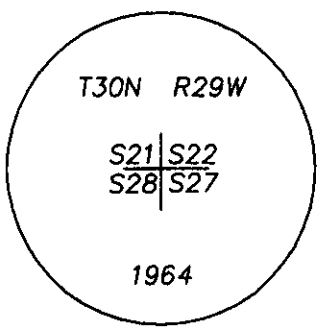
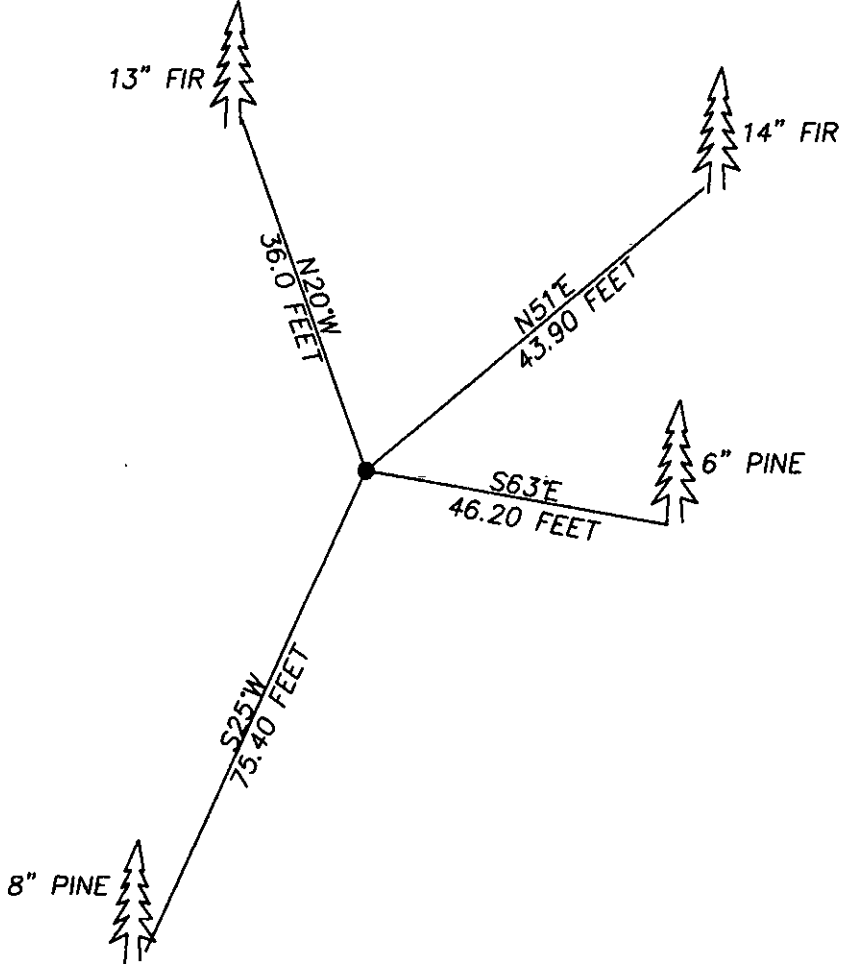


CERTIFIED CORNER RECORDATION

Corner NORTH WEST SECTION 27 T. 30N R. 29W P.M.M. LINCOLN County

FOUND: 3" B.L.M. BRASS CAP(STAMPED AS SHOWN) FROM WHICH:
 A 13" FIR BEARS N20°W 36.0 FEET WITH SCRIBE OVERGROWN
 A 14" FIR BEARS N51°E 43.90 FEET WITH SCRIBE OVERGROWN

NEW BEARING TREES
 A 8" PINE BEARS N25°W 75.40 FEET SCRIBED RM.
 A 6" PINE BEARS S63°E 46.2 FEET SCRIBED RM.



CERTIFICATION
 I, DAN CROFT
 certify the information shown herein is true and correct.
Dan Croft
 Signature of Land Party Chief
 I, MARC J. CARSTENS
 certify that this Corner Record correctly represents work
 performed by me or under my direction in compliance with
 the "Corner Recordation Act" (70-22-101, et seq. M.C.A.)
Marc J. Carstens
 Signature of Surveyor & Seal
 Date: 04-29-04 Reg. No. 5940 L.S.
 Employer: CARSTENS LAND SURVEYING

SKETCH OF CORNER

Office of Clerk and Recorder, County of LINCOLN This 'corner record' was filed for record on Doc# 176043 / 5/10/04

was noted on the cross-index plat and is assigned page No. 10634, in doc. book No. 176043

County Official

Cross Index No. R-13 T. 30N R. 29W P.M.M.

Adopted July 1, 1981, Montana Board of Professional Engineers & Land Surveyors

Sec. 27

* corner this sheet